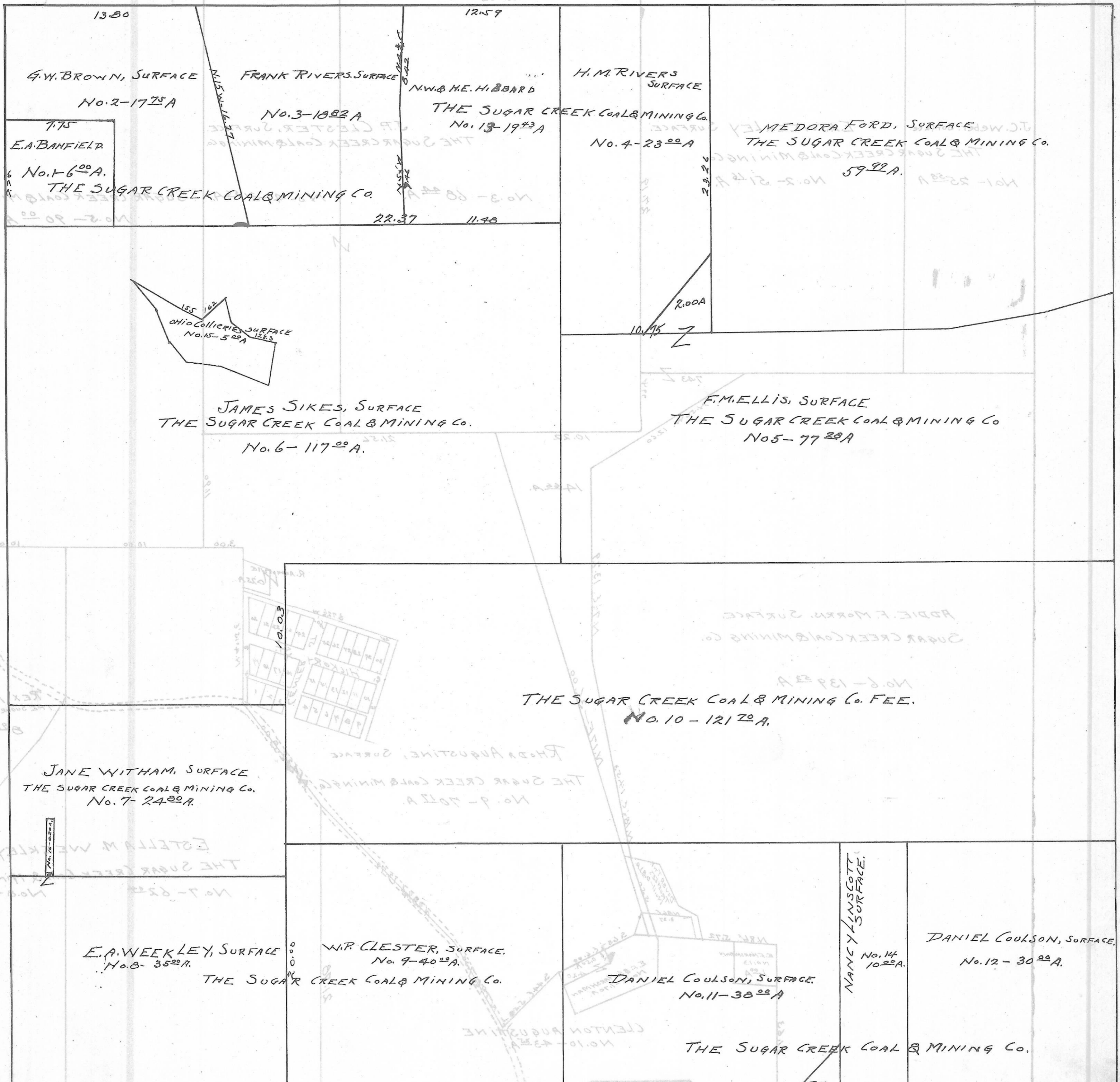


DOVER TWP.

SEC. 8 - TOWN 10 - RANGE 14

20 Rods = 1 in.



13.80
G.W. BROWN, SURFACE
No. 2-172A

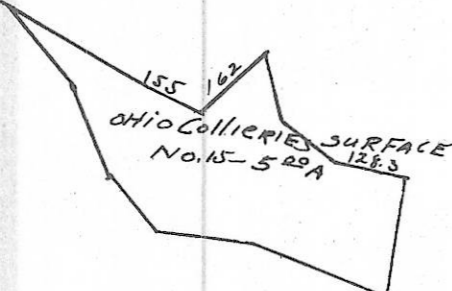
7.75
E.A. BANFIELD
No. 1-600A
THE SUGAR CREEK COAL & MINING CO.

12.59
FRANK RIVERS, SURFACE
No. 3-1882A
THE SUGAR CREEK COAL & MINING CO.

N.W. & H.E. HIBBARD
THE SUGAR CREEK COAL & MINING CO.
No. 13-1943A

H.M. RIVERS SURFACE
No. 4-2300A

MEDORA FORD, SURFACE
THE SUGAR CREEK COAL & MINING CO.
No. 59-92A



JAMES SIKES, SURFACE
THE SUGAR CREEK COAL & MINING CO.
No. 6-11700A

F.M. ELLIS, SURFACE
THE SUGAR CREEK COAL & MINING CO.
No. 5-7700A

JANE WITHAM, SURFACE
THE SUGAR CREEK COAL & MINING CO.
No. 7-2400A

THE SUGAR CREEK COAL & MINING CO. FEE.
No. 10-12100A

E.A. WEEKLEY, SURFACE
No. 8-3500A
THE SUGAR CREEK COAL & MINING CO.

W.P. CLESTER, SURFACE
No. 9-4000A
THE SUGAR CREEK COAL & MINING CO.

DANIEL COULSON, SURFACE
No. 11-3800A

NANCY LINSKOTT SURFACE
No. 14-1000A

DANIEL COULSON, SURFACE
No. 12-3000A

THE SUGAR CREEK COAL & MINING CO.