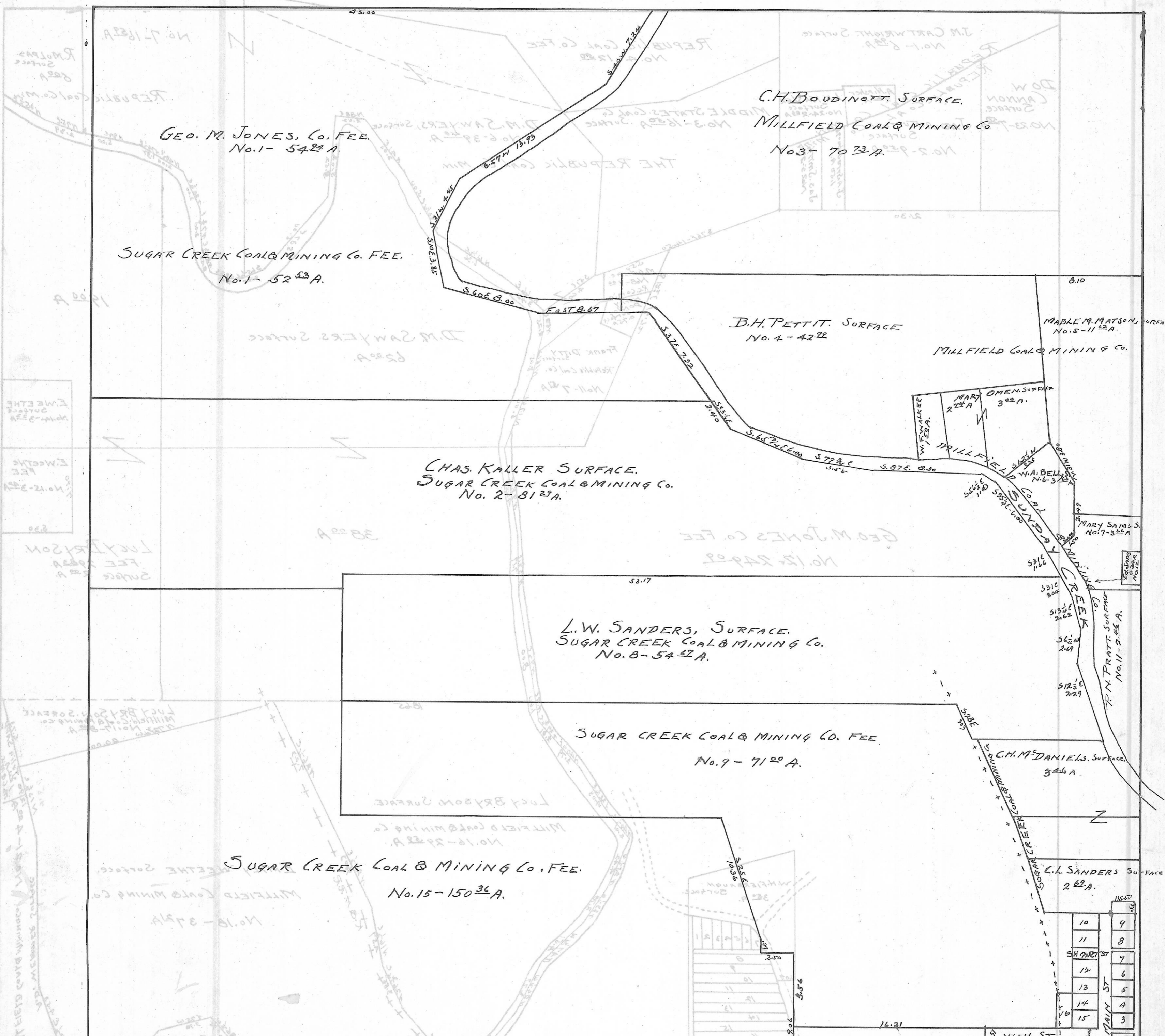


DOVER TWP. - SEC. 17 - TOWN, 10 - RANGE, 14.

20 Rods = 1 IN



GEO. M. JONES, Co. FEE.
No. 1-5424 A.

SUGAR CREEK COAL & MINING Co. FEE.
No. 1-5253 A.

C.H. BOUDINOTT SURFACE.
MILLFIELD COAL & MINING Co
No. 3-7073 A.

B.H. PETTIT SURFACE
No. 4-4292

CHAS. KALLER SURFACE.
SUGAR CREEK COAL & MINING Co.
No. 2-8123 A.

L.W. SANDERS SURFACE.
SUGAR CREEK COAL & MINING Co.
No. 8-5442 A.

SUGAR CREEK COAL & MINING Co. FEE
No. 9-7100 A.

SUGAR CREEK COAL & MINING Co. FEE.
No. 15-15036 A.

MABLE M. MATSON SURFACE
No. 5-1122 A.
MILLFIELD COAL & MINING Co.

MARY OMEN SURFACE
322 A.
MILLFIELD COAL & MINING Co.

MARY SAMS SURFACE
No. 7-322 A.

F.N. PRATT SURFACE
No. 11-225 A.

C.H. McDANIELS SURFACE.
346 A.

C.A. SANDERS SURFACE
262 A.

10	9
11	8
12	7
13	6
14	5
15	4
	3