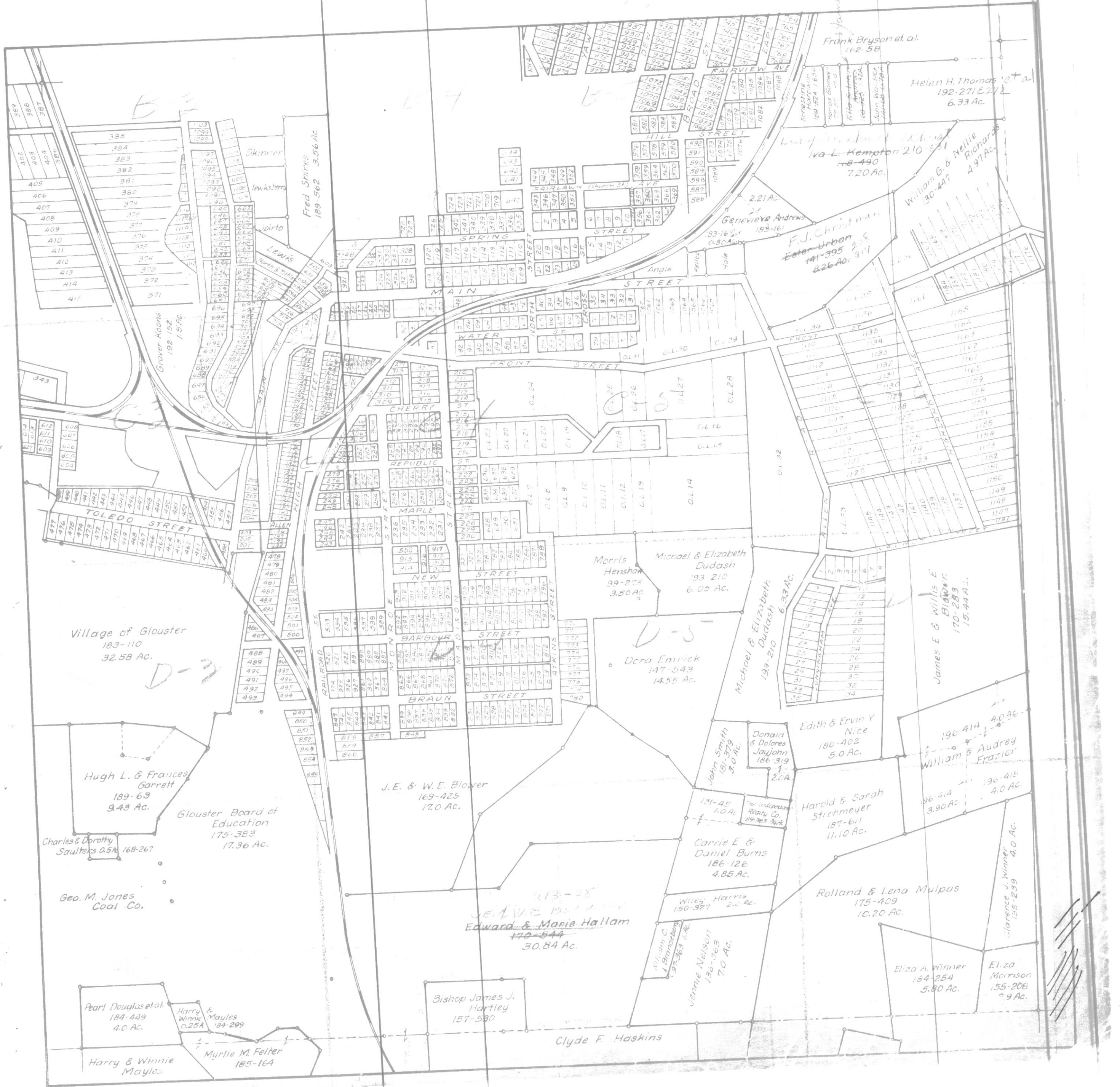


ATHENS COUNTY AUDITOR TAX PLAT
Approx. Scale 1"=400' or 6 Chains

SEC. 9
Trimble Twp.
T11-R14



E-2

D-4

D-5

D-3

D-5

170-544
Edward & Marie Hallam
30.84 Ac.

Clyde F. Haskins

Frank Bryson et al.
162-58

Helan H. Thomas et al.
192-271 E 2 1/2
6.33 Ac.

Iva L. Kempton 210-490
7.20 Ac.

William G. & Nellie
Richardson
30-447
4.97 Ac.

F.J. Christman
Ester Urban
141-395
8.26 Ac.

Genevieve Andrews
33-163
0.80 Ac.

Morris
Henshaw
39-275
3.50 Ac.

Michael & Elizabeth
Dudash
193-210
6.05 Ac.

Michael & Elizabeth
Dudash
193-210
6.33 Ac.

James E. & Blanche
170-283
15.44 Ac.

Village of Glouster
183-110
32.58 Ac.

Hugh L. & Frances
Garrett
189-63
9.43 Ac.

Glouster Board of
Education
175-383
17.36 Ac.

Charles & Dorothy
Saulters 0.5A
168-267

Geo. M. Jones
Coal Co.

Pearl Douglas et al.
184-449
4.0 Ac.

Harry & Winnie
Mayles
184-299

Myrtle M. Felter
185-164

Bishop James J.
Hartley
157-530

William C.
Blanchard
197-363 1/2 Ac.

Jannie Nelson
130-363
7.0 Ac.

Carrie E. &
Daniel Burns
186-126
4.85 Ac.

Wiley Harris
150-927
2.0 Ac.

Edith & Ervin Y
Nice
180-402
5.0 Ac.

Harold & Sarah
Strohmeier
187-613
11.10 Ac.

Rolland & Lena Mulpas
175-409
10.20 Ac.

Eliza A. Winner
134-254
5.80 Ac.

Eliza Morrison
155-208
2.9 Ac.

William & Audrey
Frazier
196-414
4.0 Ac.

196-414
3.90 Ac.

196-415
4.0 Ac.

Clarence J. Winner
158-239
4.0 Ac.