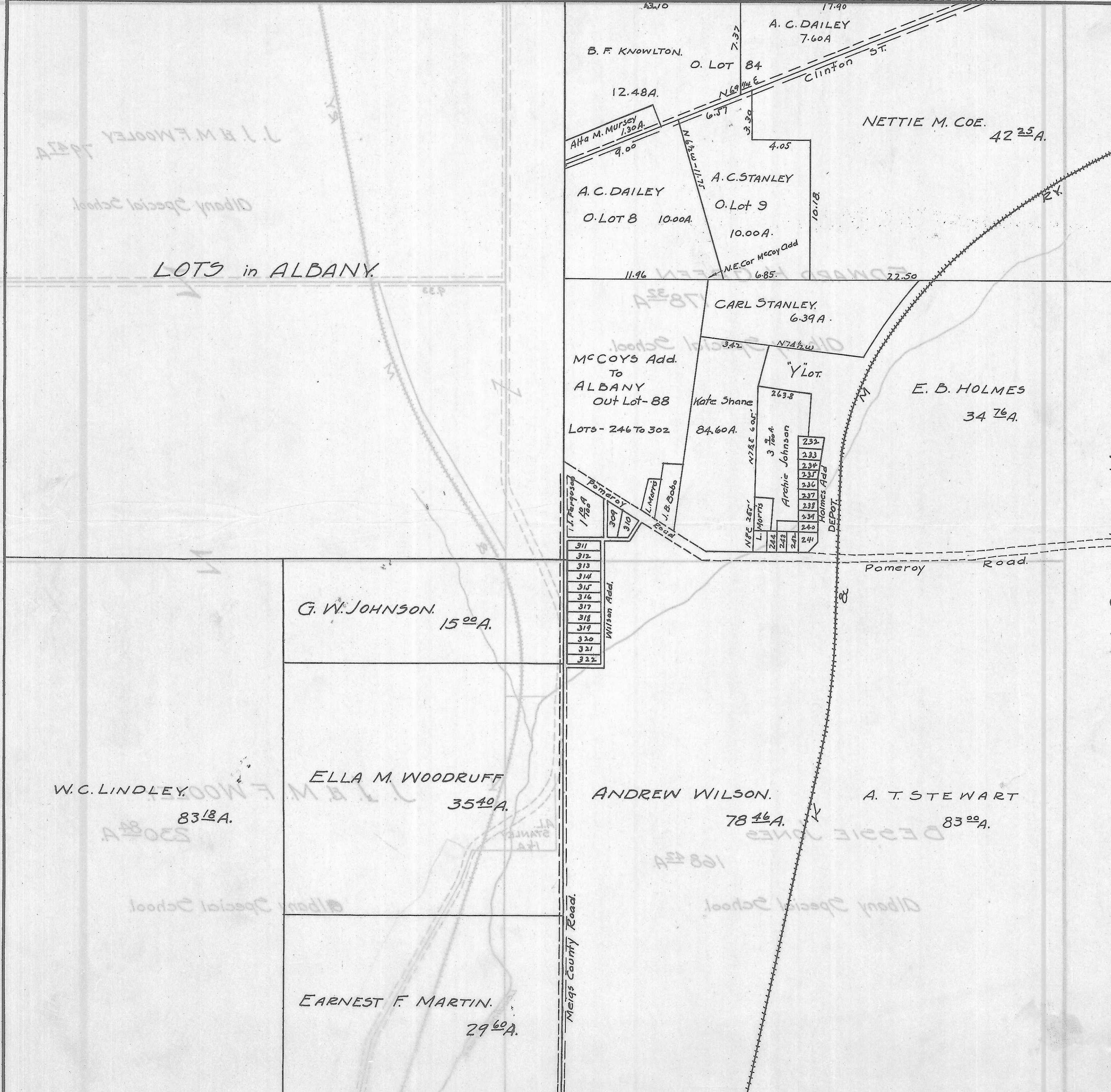


LEE TWP, SEC. 2, TOWN, 10, RANGE, 15.

SCALE 20 FEET TO INCH



J. J. B. WOOLEY

Albany Special School

LOTS in ALBANY

B. F. KNOWLTON.
O. LOT 84
12.48A.
Alta M. Mursey 1.30A.
9.00
A. C. DAILEY
O. LOT 8
10.00A.
A. C. STANLEY
O. Lot 9
10.00A.
NETTIE M. COE.
42 25 A.
Clinton St.
17.90
7.37
N 69 1/4 E
6.57
3.30
4.05
10.18
N.E. Cor McCoy Add
6.85.

CARL STANLEY.
6.39 A.
McCoy's Add.
To
ALBANY
Out Lot-88
Lots- 246 To 302
Kate Shane
84.60 A.
"Y" Lot.
E. B. HOLMES
34 76 A.
N 74 1/2 W
3.42
263.8
3 7/8 A.
Archie Johnson
232
233
234
235
236
237
238
239
240
N 78 E 60 ft.
L. Morris
241
242
243
244
245
Holmes Add
DEPOT
M

G. W. JOHNSON.
15 00 A.

- Wilson Add.
311
312
313
314
315
316
317
318
319
320
321
322

W. C. LINDLEY.
83 1/8 A.

ELLA M. WOODRUFF
35 40 A.

ANDREW WILSON.
78 1/2 A.

A. T. STEWART
83 00 A.

EARNEST F. MARTIN.
29 60 A.

Meigs County Road.

Albany Special School