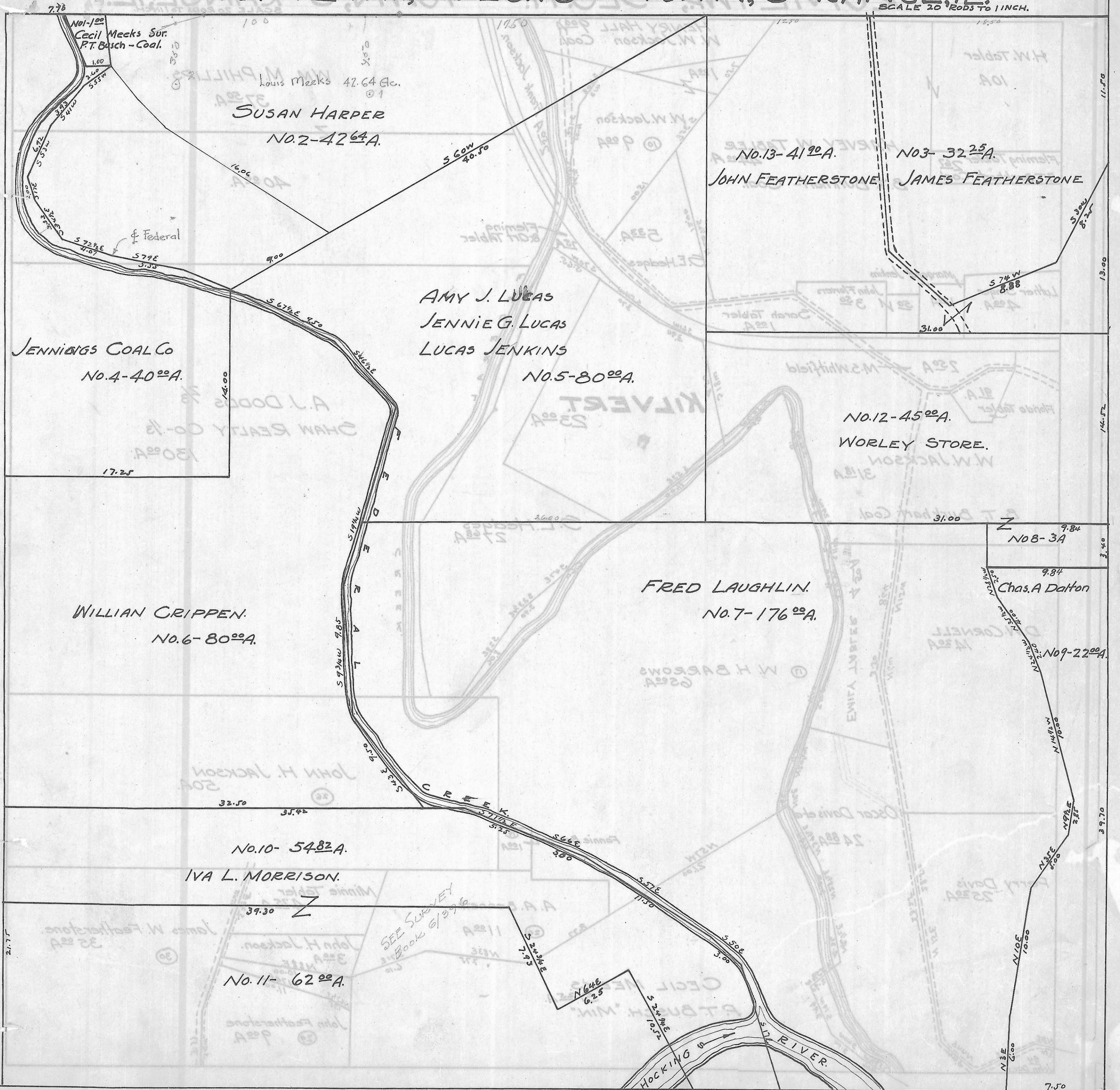


# ROME TWP. - SEC. 16 - TOWN, 6 - RANGE, 12.

SCALE 20 RODS TO 1 INCH.



7.78  
N01-100  
Cecil Meeks Sur.  
P.T. Busch - Coal.  
1.00  
2.60  
5.55  
100  
Louis Meeks 42.64 Ac.  
①  
SUSAN HARPER  
NO. 2-4264A.

N03-3225A.  
JAMES FEATHERSTONE  
N013-4190A.  
JOHN FEATHERSTONE

JENNINGS COAL CO  
NO. 4-4000A.  
14.00  
17.25

AMY J. LUCAS  
JENNIE G. LUCAS  
LUCAS JENKINS  
NO. 5-8000A.

N012-4500A.  
WORLEY STORE.

WILLIAM CRIPPEN.  
NO. 6-8000A.

FRED LAUGHLIN.  
NO. 7-17600A.

N08-3A  
Chas. A Dalton  
9.84  
3.40

N010-5482A.  
IVA L. MORRISON.

N011-6200A.

SEE SURVEY  
Book 6/396

N09-2200A.

N016-625

HOCKING RIVER  
SILVER RIVER

7.50