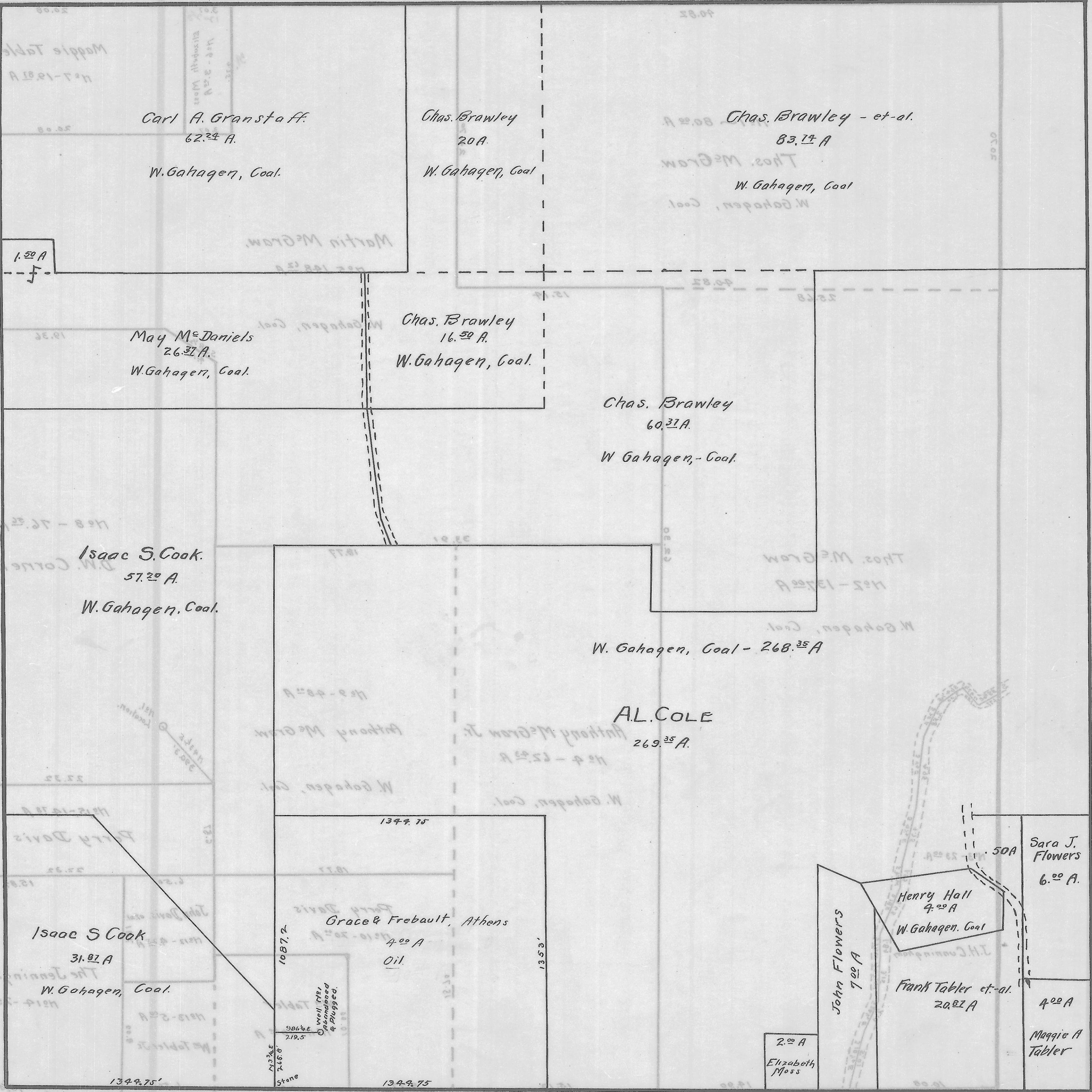


ROME TWP., - SEC. 24 - TOWN, 6 - RANGE, 12.

SCALE - 20 RODS - 1 IN.



Carl A. Granstaff.
62.34 A.
W. Gahagen, Coal.

Chas. Brawley
20 A.
W. Gahagen, Coal

Chas. Brawley - et al.
83.74 A
W. Gahagen, Coal

May Mc Daniels
26.37 A.
W. Gahagen, Coal.

Chas. Brawley
16.50 A.
W. Gahagen, Coal.

Chas. Brawley
60.31 A.
W. Gahagen, - Coal.

Isaac S. Cook.
57.20 A.
W. Gahagen, Coal.

W. Gahagen, Coal - 268.35 A

AL. COLE
269.35 A.

Isaac S Cook
31.87 A
W. Gahagen, Coal.

Grace & Frebault, Athens
4.00 A
Oil.

John Flowers
7.00 A

Henry Hall
4.00 A
W. Gahagen, Coal

Frank Tabler et al.
20.82 A

Sara J. Flowers
6.00 A.

2.00 A
Elizabeth
Moss

Maggie A
Tabler

Well No. 1,
abandoned
& plugged.
Stone
246.0'
719.5'