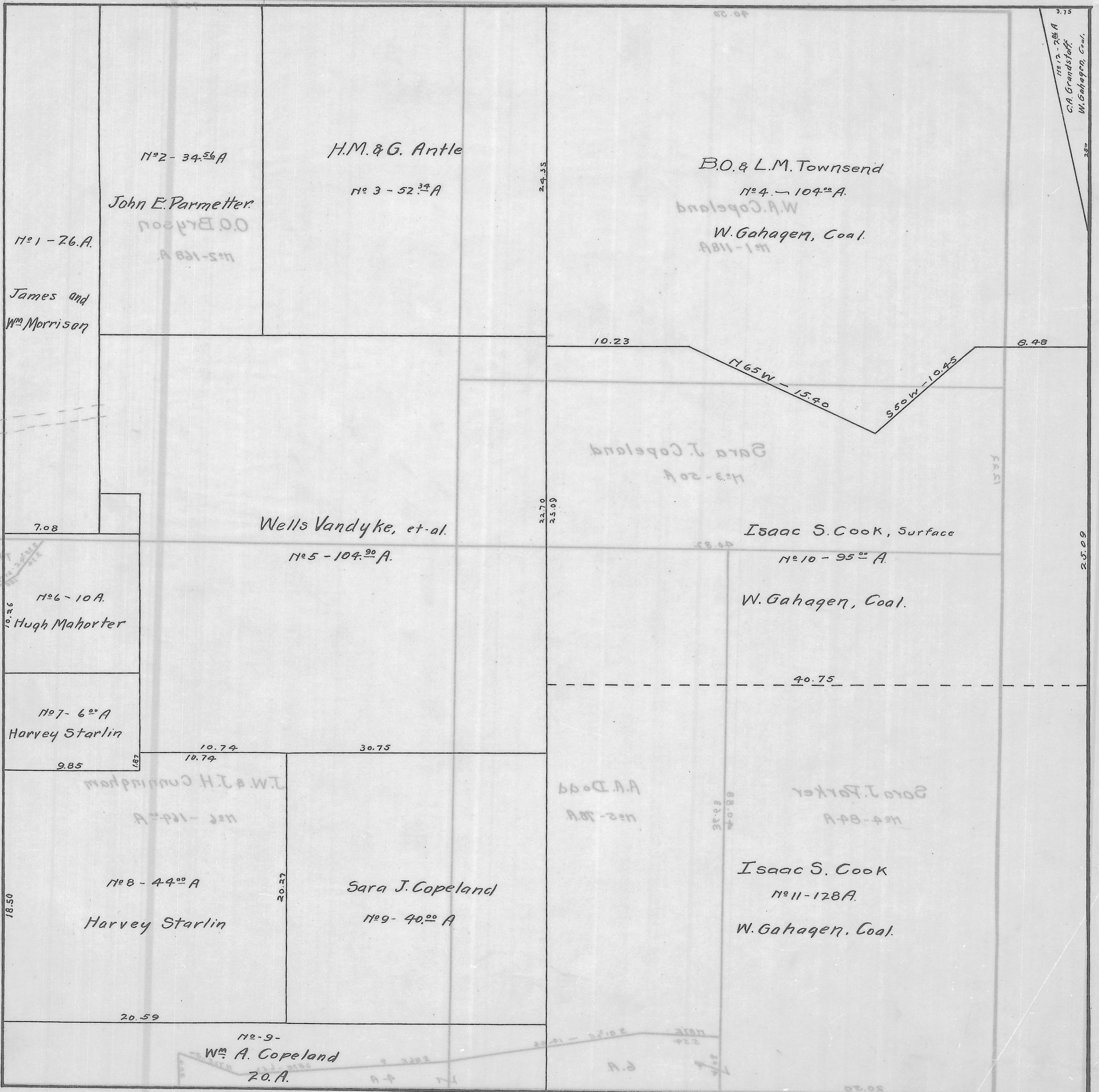


ROME TWP., SEC. 30 - TOWN, 6 - RANGE, 12.



No. 12-28A
C.A. Grandstaff
W. Gahagen, Coal.

25.09

55.00

88.00

No. 1-26.A
James and
Wm Morrison

No. 2-34.56A
John E. Parmetter

H.M. & G. Antle
No. 3-52.39A

B.O. & L.M. Townsend
No. 4-104.20A
W.A. Copeland
W. Gahagen, Coal.

Wells Vandyke, et al.
No. 5-104.20A

Isaac S. Cook, Surface
No. 10-95.A

No. 6-10A
Hugh Mahorter

No. 7-6.A
Harvey Starlin

No. 8-44.A
Harvey Starlin

Sara J. Copeland
No. 9-40.A

Isaac S. Cook
No. 11-128A
W. Gahagen, Coal.

No. 9-20.A
Wm A. Copeland