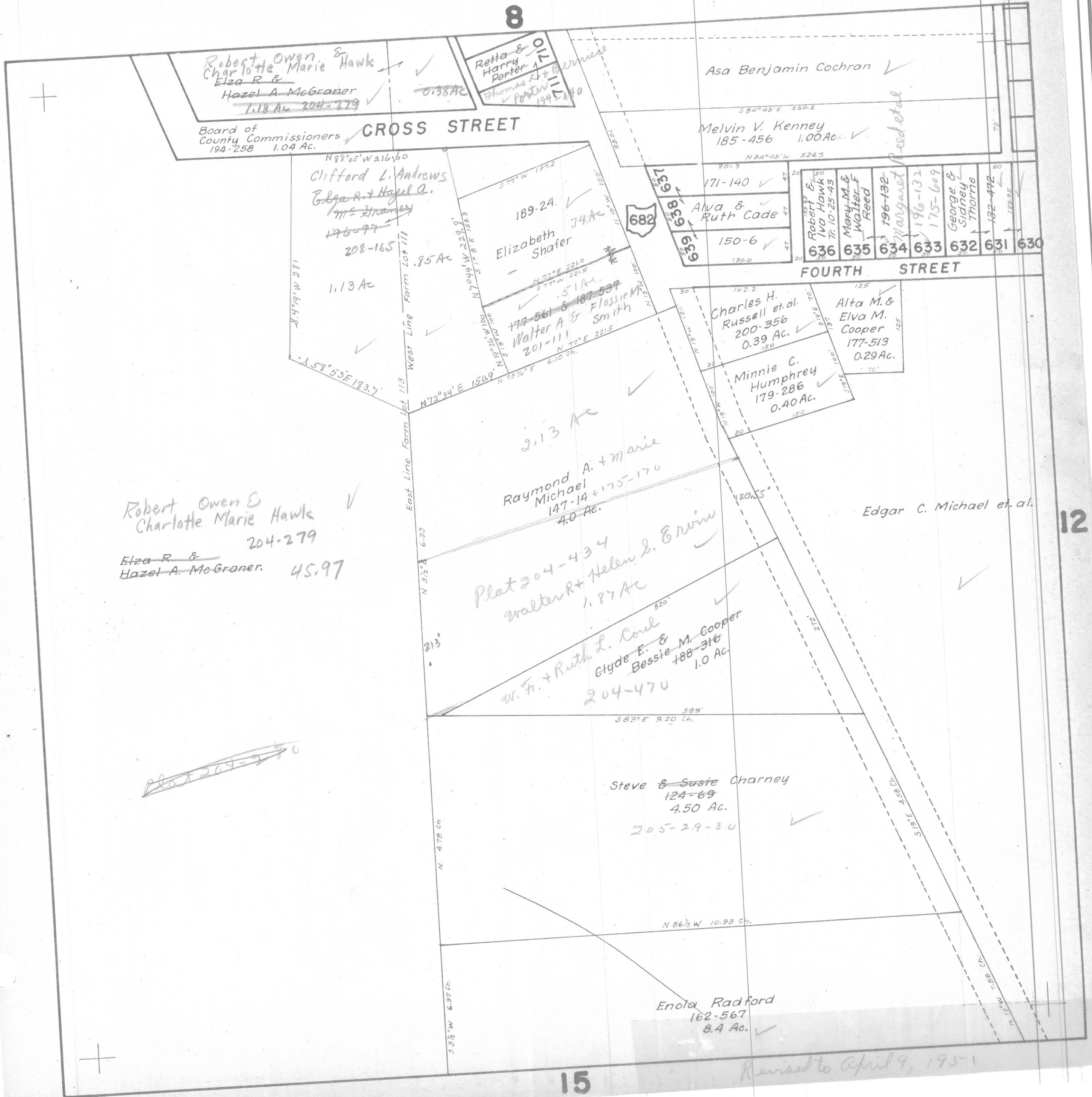


ATHENS COUNTY AUDITOR TAX PLAT
Scale 1" = 100'

THE PLAINS II
F.L. III, 113 Athens Twp.
T9 - R14

8



Robert Owen & Charlotte Marie Hawk
Elza R & Hazel A. McGraner
1.18 Ac. 204-279

Retta & Harry Porter
Thomas A. + Bernice Porter
0.38 Ac. 194-5170

Asa Benjamin Cochran

Board of County Commissioners
194-258 1.04 Ac.

CROSS STREET

Melvin V. Kenney
185-456 1.00 Ac.

Clifford L. Andrews
Elza R. + Hazel A.
196-97

189-24
Elizabeth Shafer
74 Ac.

682

171-140
Alva & Ruth Cade
150-6

636 635 634 633 632 631 630
Robert & Iva Hawk
Mary M. & Walter F. Reed
Margaret Reed et al.
George & Sidney Thorne

FOURTH STREET

1.13 Ac.

177-561 & 187-537
Walter A. & Flossie M. Smith
201-111

Charles H. Russell et al.
200-356
0.39 Ac.

Alta M. & Elva M. Cooper
177-513
0.29 Ac.

Minnie C. Humphrey
179-286
0.40 Ac.

2.13 Ac.

Raymond A. + Marie Michael
147-14 + 175-170
4.0 Ac.

Edgar C. Michael et al.

Robert Owen & Charlotte Marie Hawk
Elza R. & Hazel A. McGraner
204-279
45.97

Plat 204-434
Walter R. + Helen S. Brown
1.87 Ac.

W. F. + Ruth L. Coul
Glyde E. & Bessie M. Cooper
204-470
1.0 Ac.

Steve & Susie Charney
124-69
4.50 Ac.
205-29-30

Enola Radford
162-567
8.4 Ac.

~~Plat 204-270~~

12

15

Revised to April 9, 1951