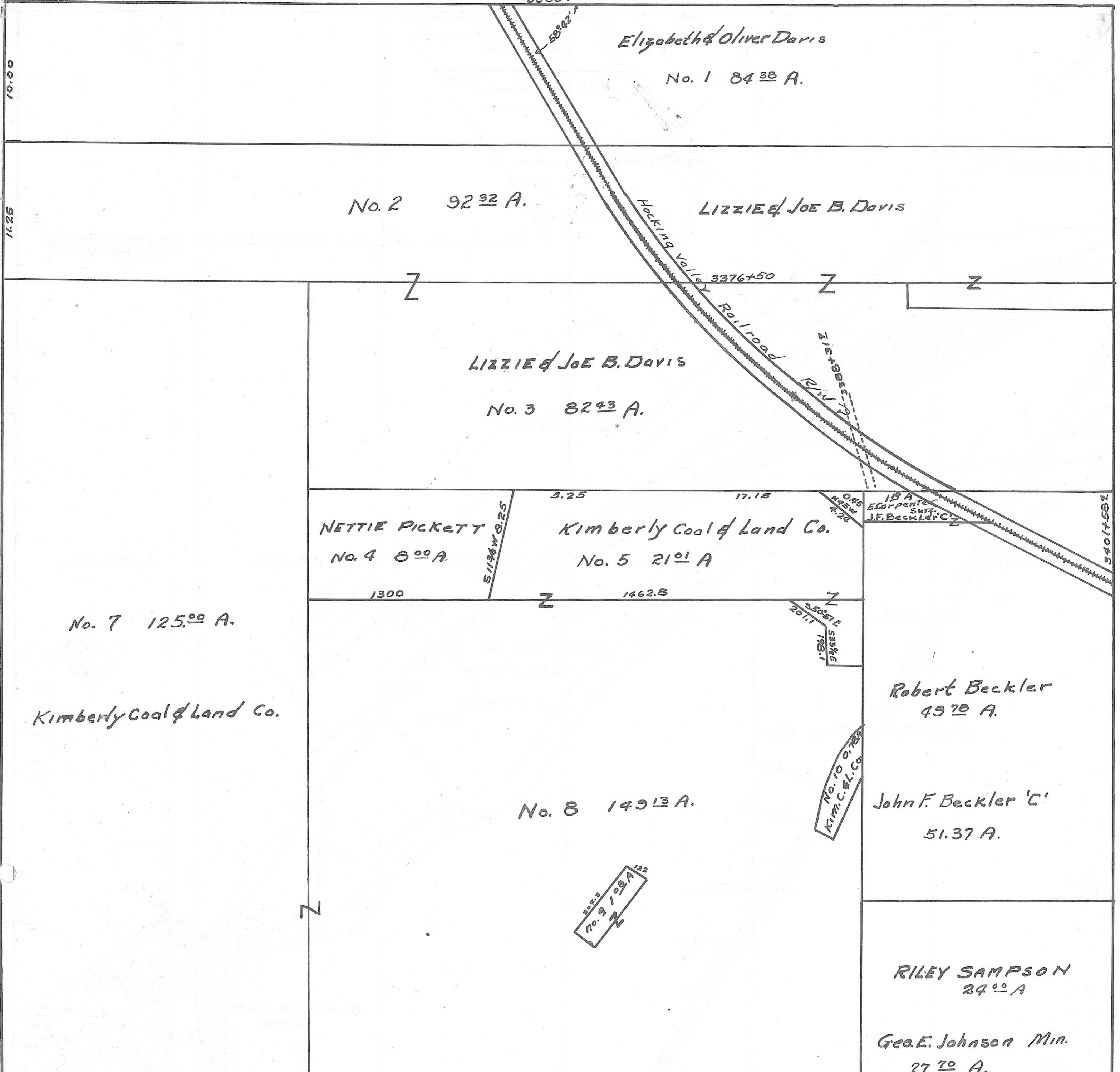


YORK TWP. - SEC. 16 - TOWN, 12 - RANGE, 15.



8359+55

Elizabeth & Oliver Davis

No. 1 84<sup>33</sup> A.

No. 2 92<sup>32</sup> A.

LIZZIE & JOE B. DAVIS

LIZZIE & JOE B. DAVIS

No. 3 82<sup>43</sup> A.

NETTIE PICKETT  
No. 4 8<sup>00</sup> A.

Kimberly Coal & Land Co.  
No. 5 21<sup>01</sup> A

No. 7 125<sup>00</sup> A.

Kimberly Coal & Land Co.

No. 8 149<sup>13</sup> A.

Robert Beckler  
49<sup>70</sup> A.

John F. Beckler 'C'  
51.37 A.

RILEY SAMPSON  
24<sup>00</sup> A

Geo. E. Johnson Min.  
27<sup>70</sup> A.

122  
No. 9 / 29 A  
Z

No. 10 0.78 A  
Kim. C. & L. Co.

53057 E  
201.1  
198.1  
S33 1/2 E

19 A  
E Carpenter  
Surf. C  
J.F. Beckler

S113 1/4 W 92.5

3.25 17.15

1300 1462.8

3376+50

Hocking Valley  
Railroad

E 1/4 - 3855 - 12

3401+581

10.00

11.25