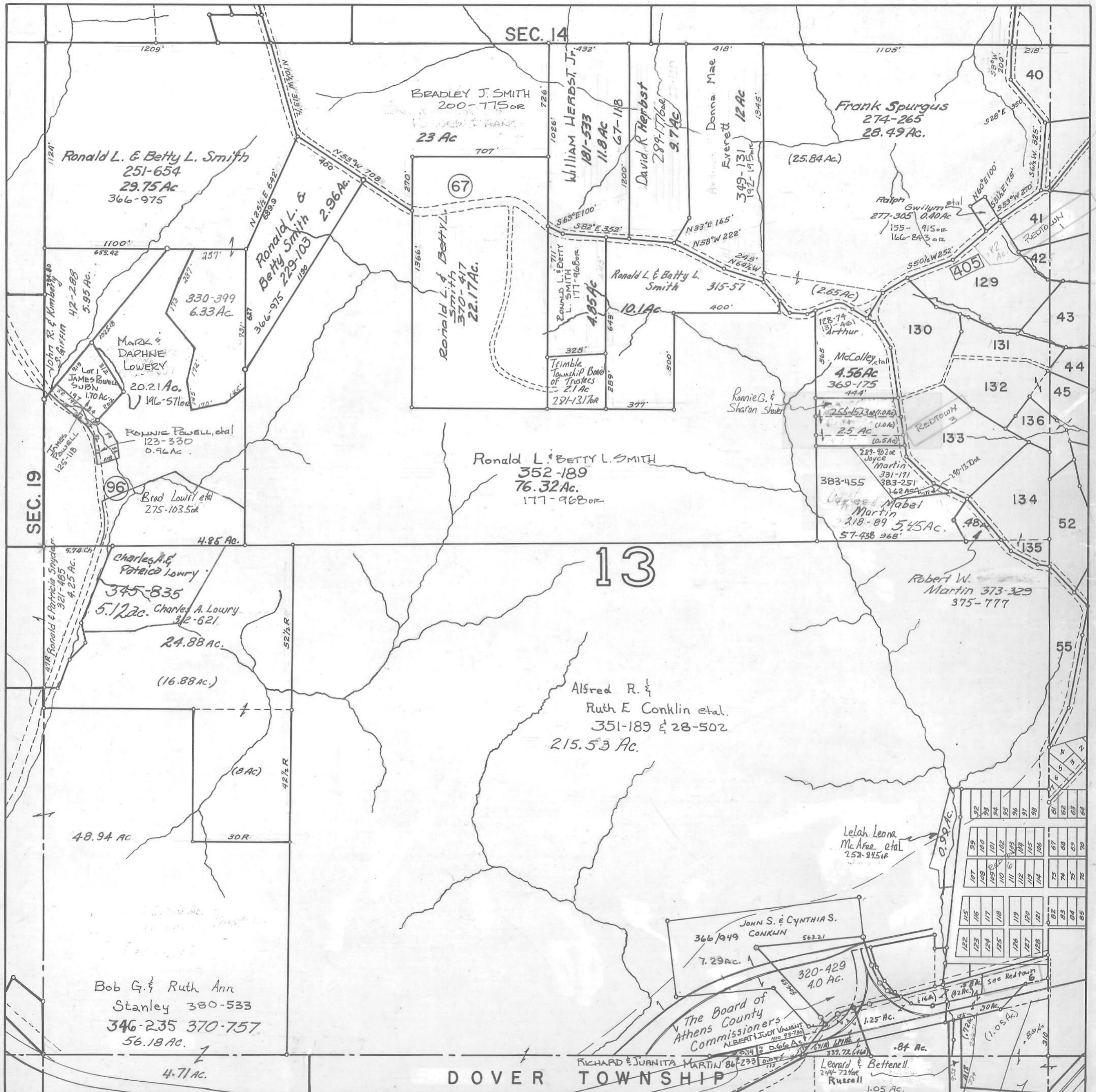


ATHENS COUNTY AUDITOR TAX PLAT
 Approx. Scale 1" = 400' or 6 Chains

SEC. 13
 Trimble Twp.
 T11-R14



0.14 AC. TRACT MUST BE HELD CONTIGUOUS & ADJACENT WITH 0.49 AC. TRACT IN DOVER SEC. 18
 Revised to