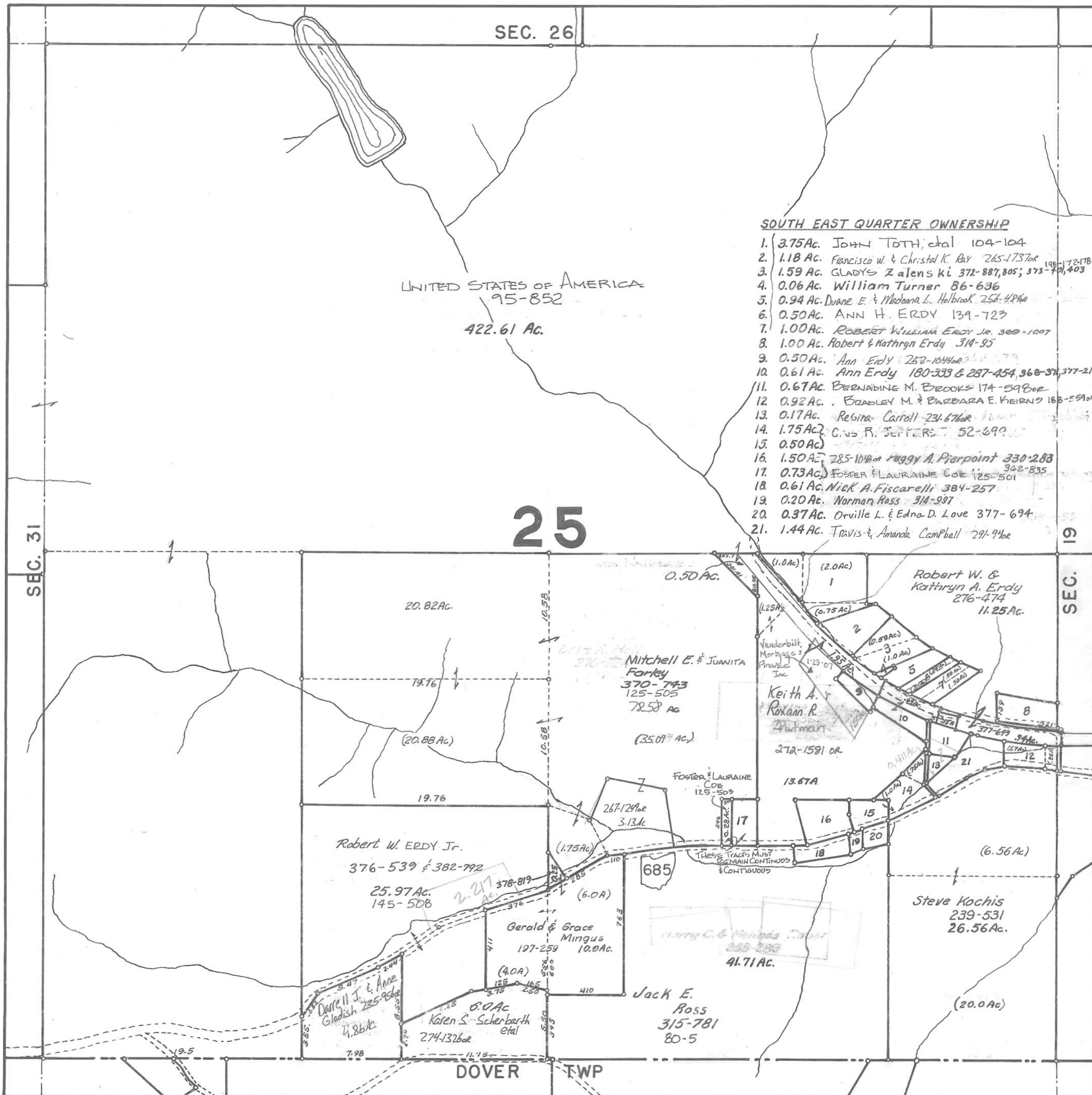


ATHENS COUNTY AUDITOR TAX PLAT
 Approx. Scale 1"=400' or 6 Chains

SEC. 25
 Trimble Twp.
 T11-R14



SOUTH EAST QUARTER OWNERSHIP

1. 3.75 Ac. JOHN TOTH, et al 104-104
2. 1.18 Ac. Francisco W. & Christal K. Ray 265-1737or
3. 1.59 Ac. GLADYS Z alenski 372-887,805; 373-701,403
4. 0.06 Ac. William Turner 86-636
5. 0.94 Ac. Duane E. & Madonna L. Holbrook 252-494or
6. 0.50 Ac. ANN H. ERDY 139-723
7. 1.00 Ac. ROBERT WILLIAM ERDY JR. 309-1007
8. 1.00 Ac. Robert & Kathryn Erdy 314-95
9. 0.50 Ac. Ann Erdy 252-1044or
10. 0.61 Ac. Ann Erdy 180-333 & 287-454, 368-371, 377-21
11. 0.67 Ac. BERNADINE M. BROOKS 174-598or
12. 0.92 Ac. BRADLEY M. & BARBARA E. KEIRNS 188-590or
13. 0.17 Ac. Regina Carroll 234-676or
14. 1.75 Ac. CAROL R. JEFFERS 52-699
15. 0.50 Ac.
16. 1.50 Ac. 285-1044or Peggy A. Pierpoint 330-283
17. 0.73 Ac. FOSTER & LAURINE COE 125-501
18. 0.61 Ac. Nick A. Fiscarelli 384-257
19. 0.20 Ac. Norman Ross 314-997
20. 0.37 Ac. Orville L. & Edna D. Love 377-694
21. 1.44 Ac. Travis & Amanda Campbell 291-94or

25

UNITED STATES OF AMERICA
 95-852
 422.61 Ac.

Robert W. &
 Kathryn A. Erdy
 276-474
 11.25 Ac.

Mitchell E. & JUANITA
 Farley
 370-743
 125-505
 78.58 Ac
 (35.07 Ac.)

Robert W. ERDY Jr.
 376-539 & 382-792
 25.97 Ac.
 145-508

Gerald & Grace
 Mingus
 197-259
 10.0 Ac.

Jack E.
 Ross
 315-781
 80-5

Steve Kochis
 239-531
 26.56 Ac.

DOVER TWP

Revised to