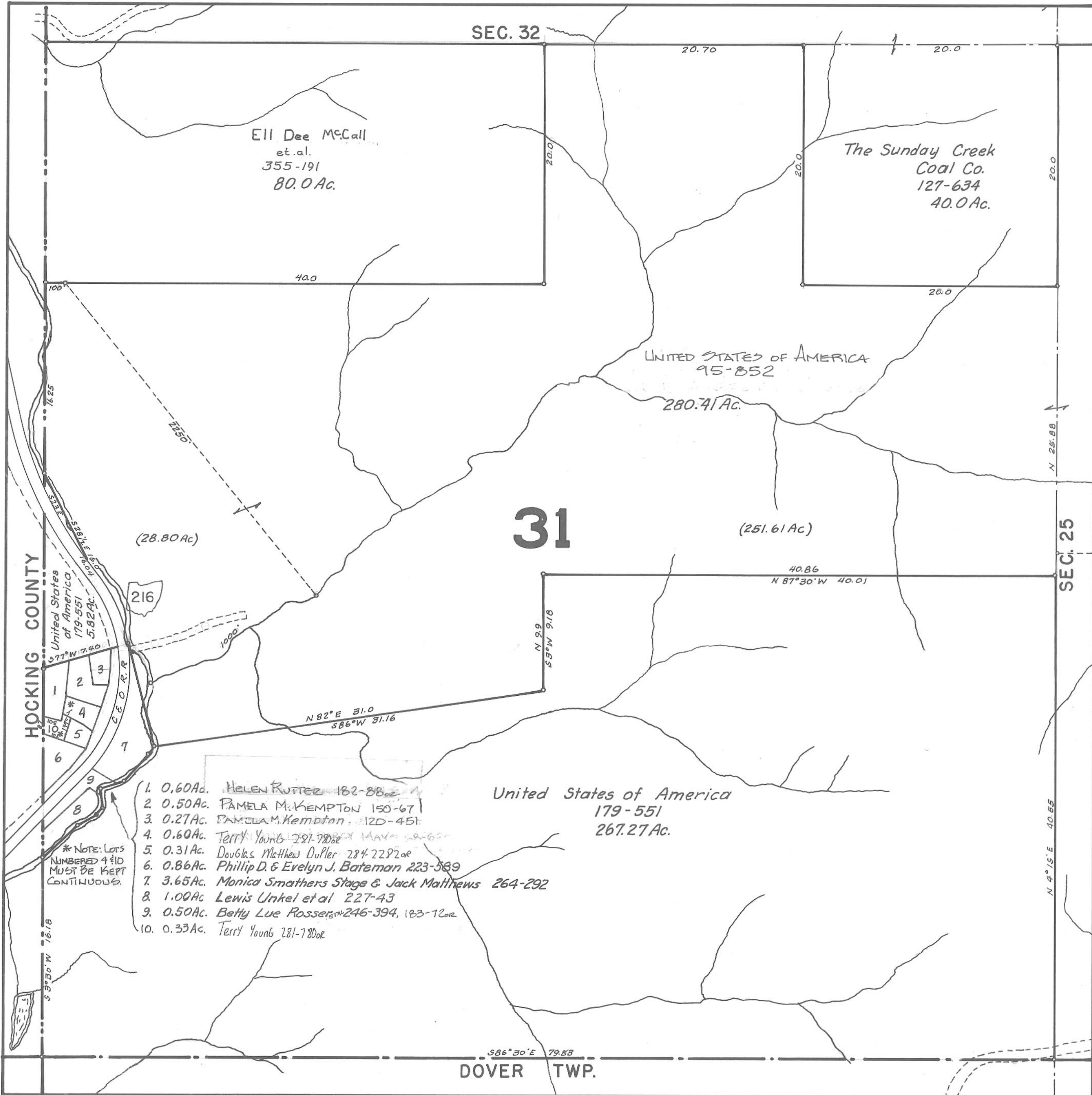


ATHENS COUNTY AUDITOR TAX PLAT
 Approx. Scale 1"=400' or 6 Chains

SEC. 31
 Trimble Twp.
 T11-R14



HOCKING COUNTY

United States of America
 179-551
 5.82 Ac.

- 1
- 2
- 3
- 4
- 5
- 6
- 7
- 8
- 9
- 10

* NOTE: LOTS
 NUMBERED 4 & 10
 MUST BE KEPT
 CONTIGUOUS.

1. 0.60 Ac. Helen Rutter 182-88
2. 0.50 Ac. Pamela M. Kempton 150-67
3. 0.27 Ac. Pamela M. Kempton 120-45
4. 0.60 Ac. Terry Young 281-780
5. 0.31 Ac. Douglas Matthew Duffer 284-228
6. 0.86 Ac. Phillip D. & Evelyn J. Bateman 223-589
7. 3.65 Ac. Monica Smathers Stage & Jack Matthews 264-292
8. 1.00 Ac. Lewis Unkel et al. 227-43
9. 0.50 Ac. Betty Lue Rosser 246-394, 183-120
10. 0.33 Ac. Terry Young 281-780

United States of America
 179-551
 267.27 Ac.