

ATHENS COUNTY AUDITOR TAX PLAT

Approx. Scale 1" = 400' or 6 Chains

SEC. 30
Trimble Twp.
T11 - R14

PERRY COUNTY

HOCKING COUNTY

SEC. 30

Semington Enterprises, Inc.
368-88

588.25 Ac.

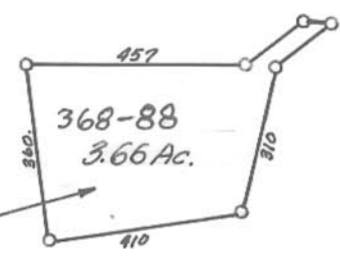
Plat 588.116 ac

Scioto Land Co. LLC

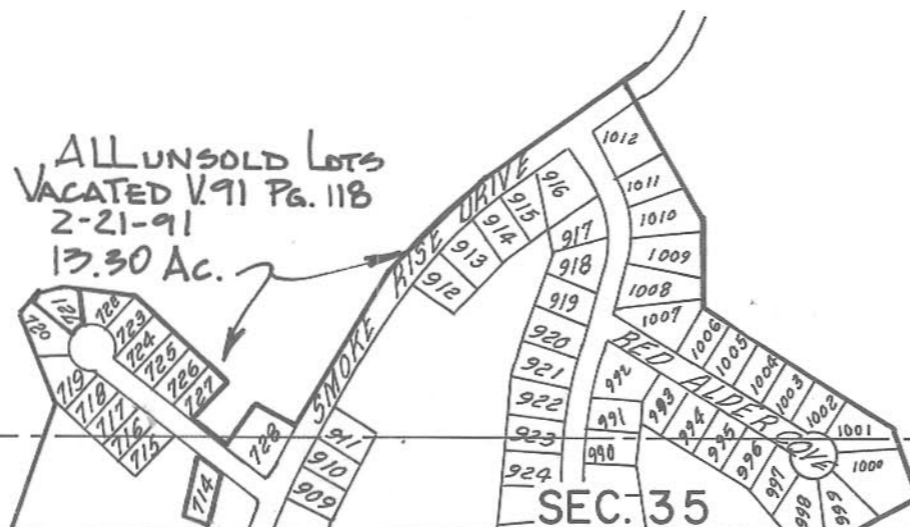
1-20-06

LAVESTOCK INC.
340-1
1.0 AC.

Semington Enterprises, Inc.



ALL UNSOLD LOTS
VACATED V.91 PG. 118
2-21-91
13.30 AC.



SEC. 35

Revised to