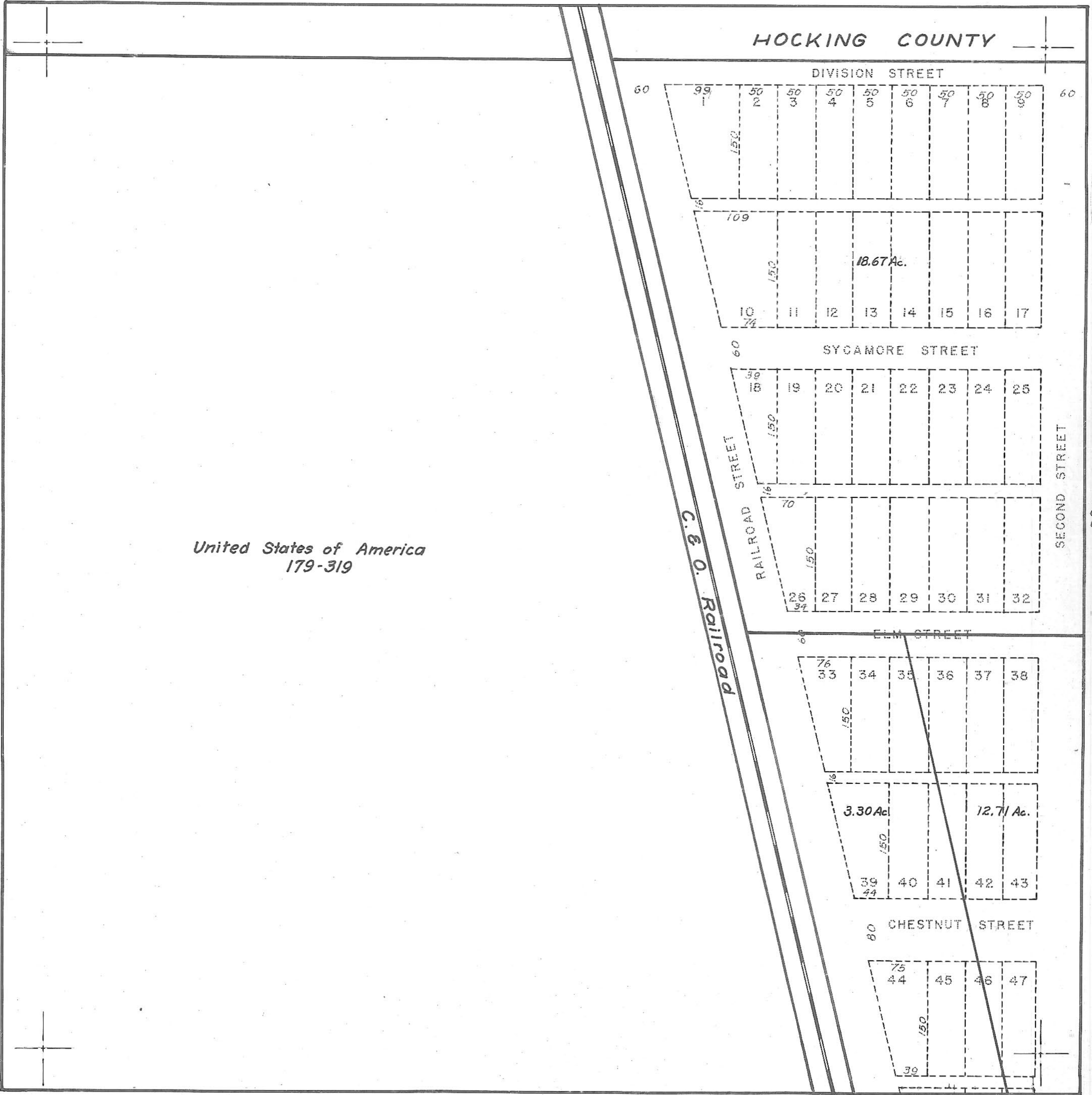


ATHENS COUNTY AUDITOR TAX PLAT
Scale 1" = 100'

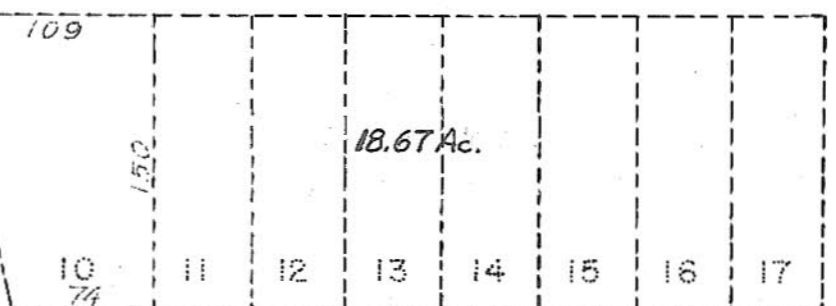
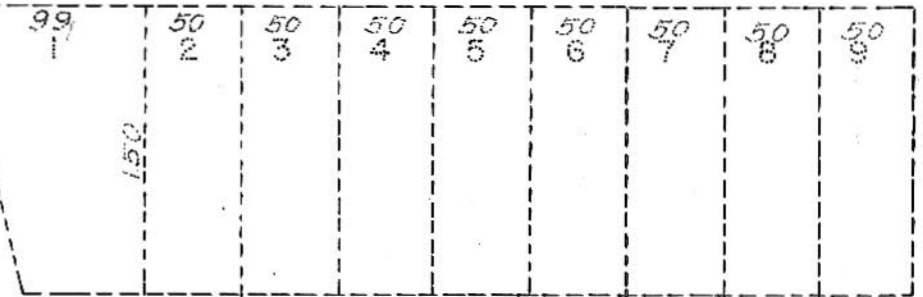
BESSEMER I
NW. Q of NW. Q SEC. 12
York Twp.
T12N-R15W



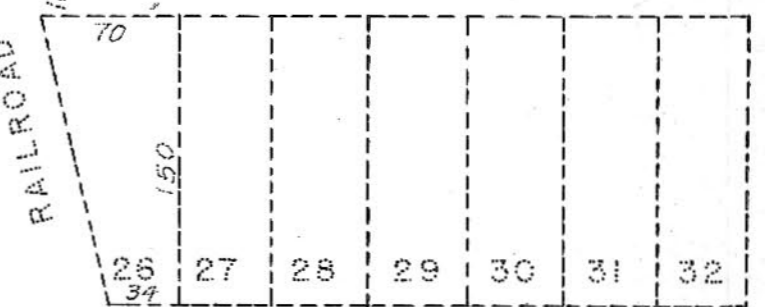
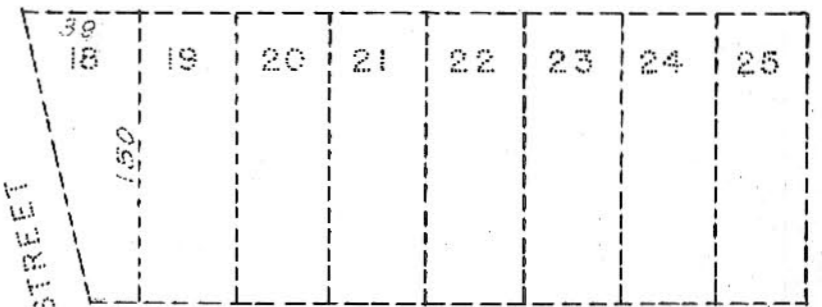
HOCKING COUNTY

DIVISION STREET

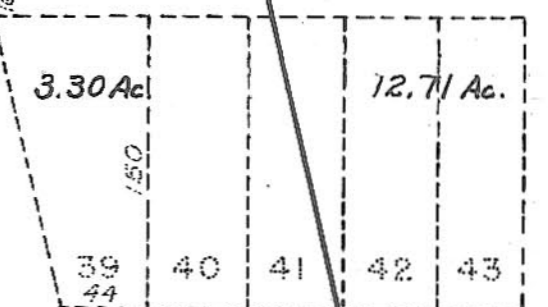
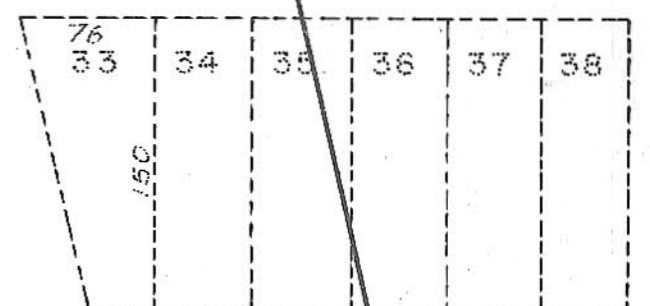
60 99 50 50 50 50 50 50 50 50 60



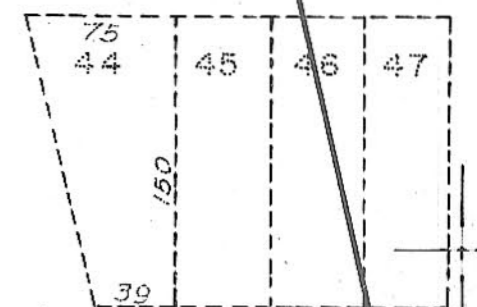
SYCAMORE STREET



ELM STREET



CHESTNUT STREET



United States of America
179-319

C. & O. Railroad

RAILROAD STREET

2