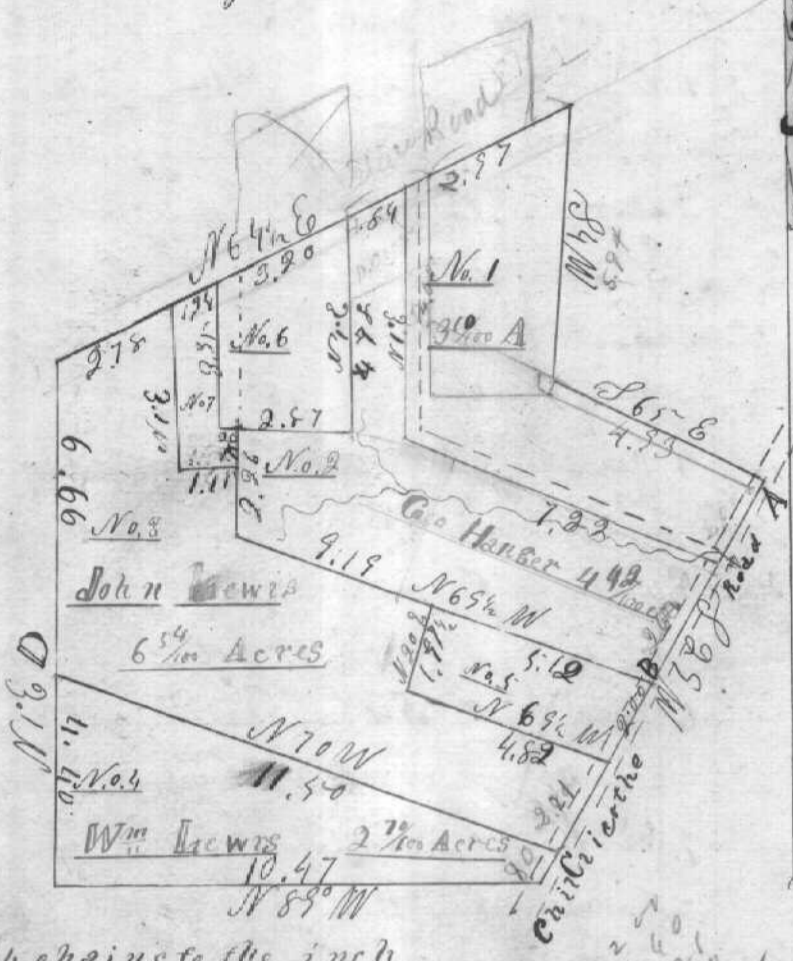


107 Plan and notes of a division of a lot sold by Amos Thompson off the N.W. quarter of Sect. 2 Lee Township. Commencing at the S.W. corner of Wm. S. Lewis lot thence N⁶⁶°E 10 chains 6 links thence N⁶⁴°E 12 chains 13 links thence S⁴°W 50.842. thence S⁶°E 4 chains 93 links, thence S²⁹°W 9 ch. 63 lbs. thence N⁸⁹°W 10 ch. 47 lbs. to the place of beginning. containing 16^{7/100} Acres.



The areas of the four general divisions of the above described lot are noted on the plat. Which include the areas of their subdivisions.

N. B. The division line between lot No. 2 & No. 3. commences at B thence N⁶⁷°W 9 chains 19 links, thence N⁶°E 2 chains 26 links thence West 25 links, thence N⁶°E 3 chains 43 links; to the North side of lot

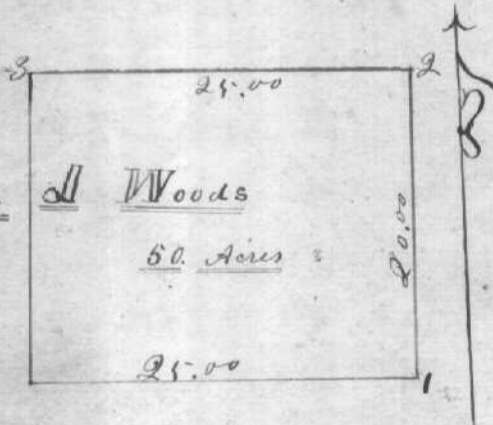
Scale of 4 chains to the inch

Surveyed August 26th 1850
Recorded Sept. 20th 1850

John Achley Co. Surveyor

- A | White Oak 30 inches N. 43 E. 52 links dist
Stone set for corner
- B | " " " "
- C | Sugar 14 inches S 65 E 61 " "
- D | Hickory 14 " N 75 W 26 " "

108 Plan and notes of a 50 acre lot surveyed from the S.W. corner of the N.W. quarter of Sect. 25 Town 4 Range 13 O. C. P.



- 1 | Hickory 10 N 22 E 47
 - 1 | White oak 18 corner
 - Beech 10 N 75 E 58
 - 2 | White oak 36 N 85 E 66
 - Red oak 20 S 39 W 50
 - 3 | White oak 10 S 26 E 34
 - Black oak 9 N 8 W 25
- Surveyed April 12th
Recorded May 15th 1850
John Achley Co. Surveyor

109 Plan and notes of a piece of land surveyed from the West end of Lot 172 Sect. 31 Town 8 Range 14 O. U. S.



- 1 | Red Oak 12 N 24 W 56
- Sugartree 10 N 56 W 62
- 2 | ash 5 S 65 E 22
- do 6 N 78 E 32

Surveyed June 7th 1850
Recorded May 27th 1851

John Achley C. S.