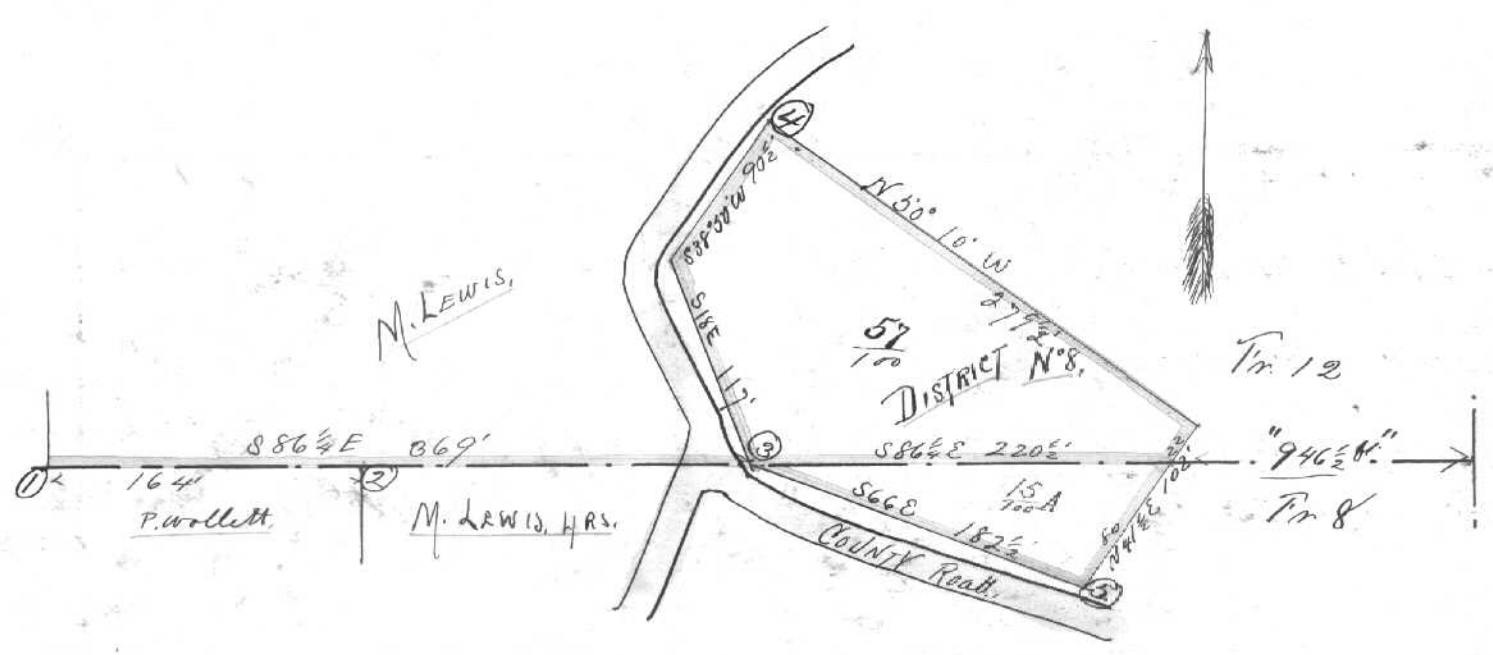


N^o 239 IN TRACTS N^o 8 & 12 - SEC'S 33 & 34 - T. 12. R. 15 - YORK TP -

WITNESS TREES.

- ① { White oak 40" N26½E 22 ft.
Chestnut 30" N86E 37½ "
- ② { Yellow oak 20" N65½W 14 "
Walnut 4" S23W 24 "
- ③ { White oak 15" S51½W 56 "
Black oak 15" S7¾E 61 "
- ④ { Poplar 5" N49½E 42½ "
Elm 5" N49½W 25 "
- ⑤ { Black oak 15" S65E 17 "
" " 18" S46E 50 "



Surveyed April 27 1889 for York Tp. School Board. Scale 100ft. to an inch.
 W.E. PETER
 County Surveyor.

M. P. Thompson } Committee
 Geo. P. Myers }
 Hiram H. Wilson } Assistants

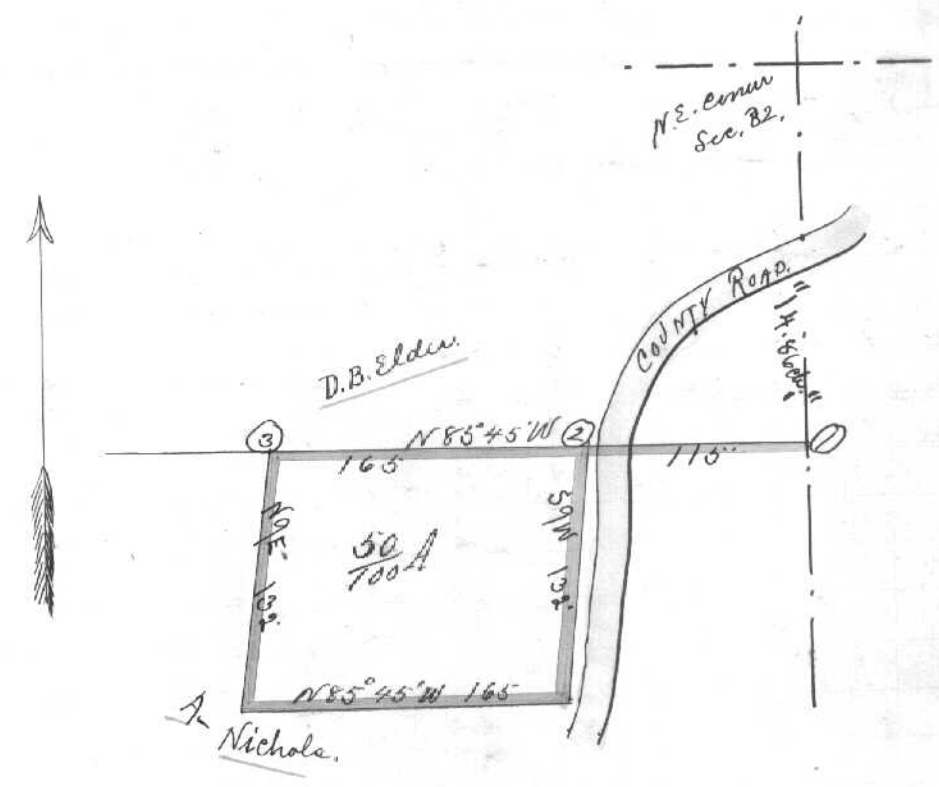
Bearings connected to the true Meridian at Athens, Ohio

Steel tape measurement.

N^o 240 IN SECTION N^o 32 T. 12. R. 15 - YORK TP -

Witness Trees.

- ① { Black oak 20" N16½W 37½ ft.
Hickory 8" S28E 7½ "
- ② { Walnut 10" N83W 31 "
Apple 5" N15E 13 "
- ③ { Hickory 4" N51E 7½ "
Sassafras 6" N30W 6 "



Surveyed April 27 1889 for York Tp Board of Education - DISTRICT N^o 7.
 W.E. PETER
 County Surveyor.

Scale 100ft. to an inch.

M. P. Thompson } Committee
 Geo. P. Myers }
 Hiram H. Wilson } Assistants

Steel tape measurement.