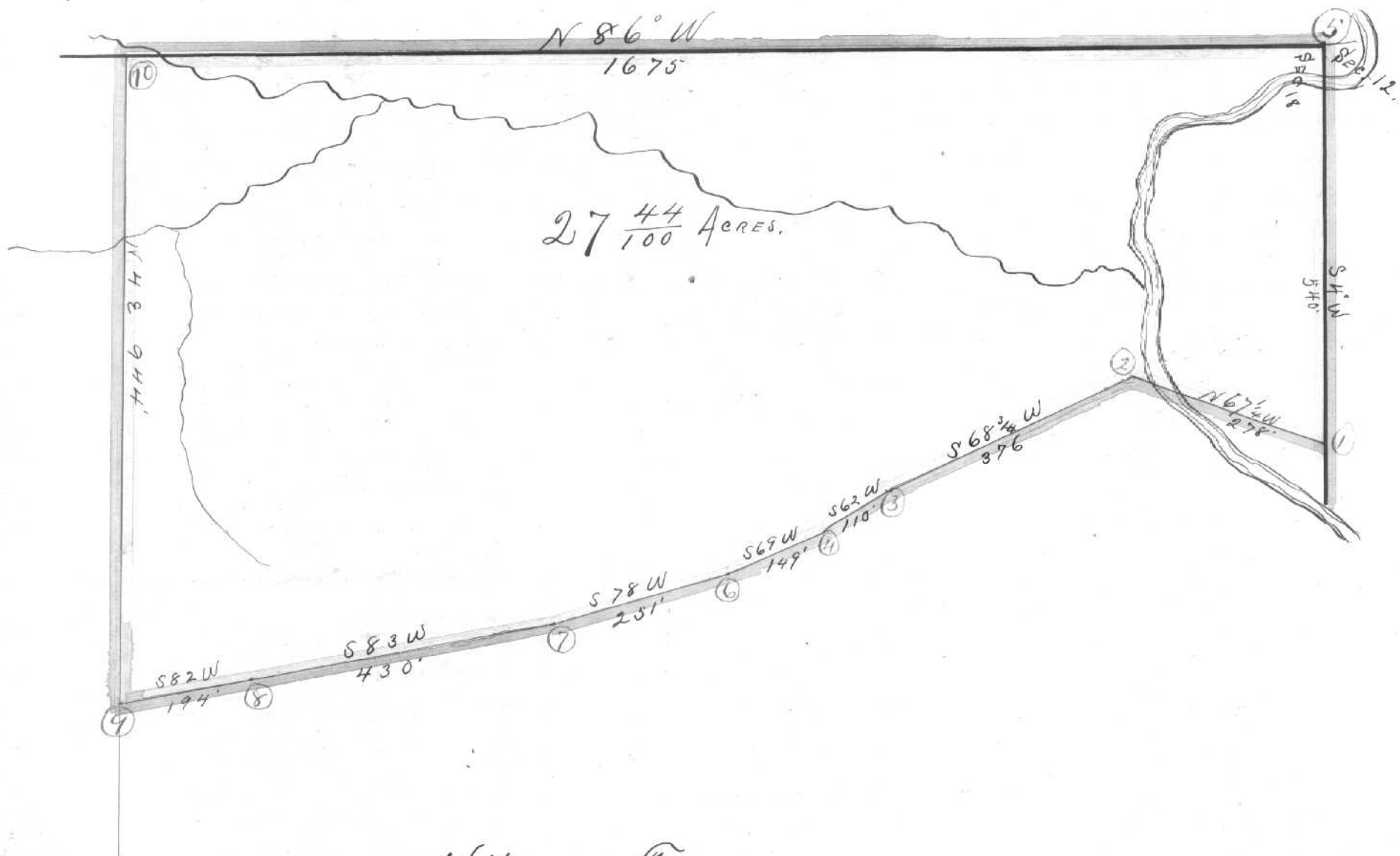


N^o 317. IN SECTION 18. T. 12. R. 15. YORK TP



Witness Trees.

① { Elm 15" S 9° W 45 ft.
Walnut 20" N 36° W 48 "

⑥ { Hickory 6" S 76° E 12 ft.
Red oak — N 81° W 27 "

② { Butternut 8" N 21° E 11 1/2"
" 15" S 13° E 58 "

⑦ { White oak 4" N 17° E 9 "
Hickory 6" N 33° E 13 "

③ { Butternut 10" S 66° E 16 1/2"
Elm 5" N 60° W 6 1/2"

⑧ { White oak 12" S 17° W 12 "
Ash 6" N 7° W 21 "

④ { Ash 4" S 23° W 4 1/2"
Hickory 5" N 84° W 11 "

⑨ { Poplar stub 5" N 30° W 1 "
Hickory 7" N 88° E 19 "

⑤ { See No 1 of survey No 257
Vol. 3 Page 142

⑩ { SEE No 9 of survey No 430
Vol No 2 Page 176.

Bearings Corrected to the true Meridian

Steel Tape measurement.

scale 200 ft. to an inch.

Surveyed May 5th 1890 for C.L. Poston.

W.E. Peters
County Surveyor

Leander Tipton.
Frank Raine.
Oliber Thompson. } asst.