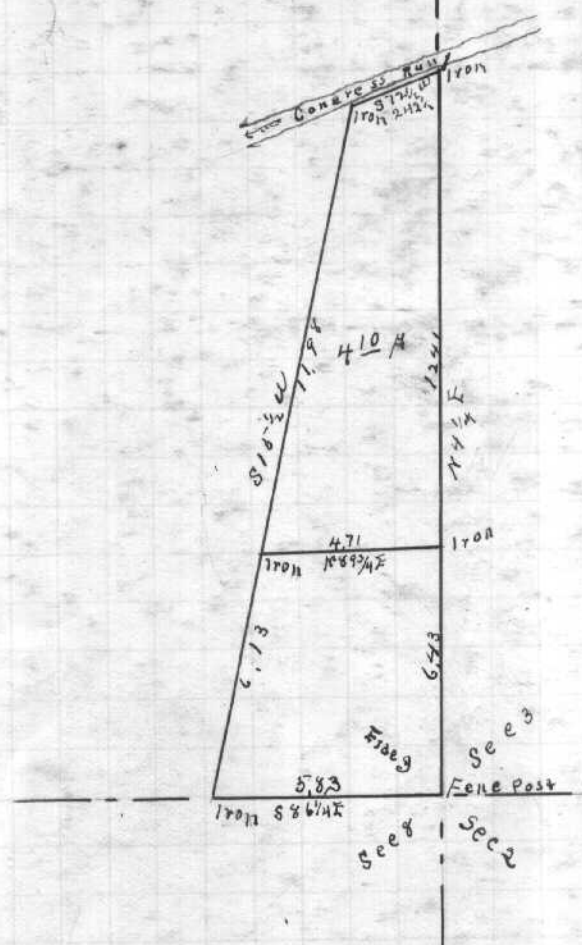


(Trimble Twp)
Ira Sands Survey in Fraction N^o 3 Town N^o 11 Range N^o 14



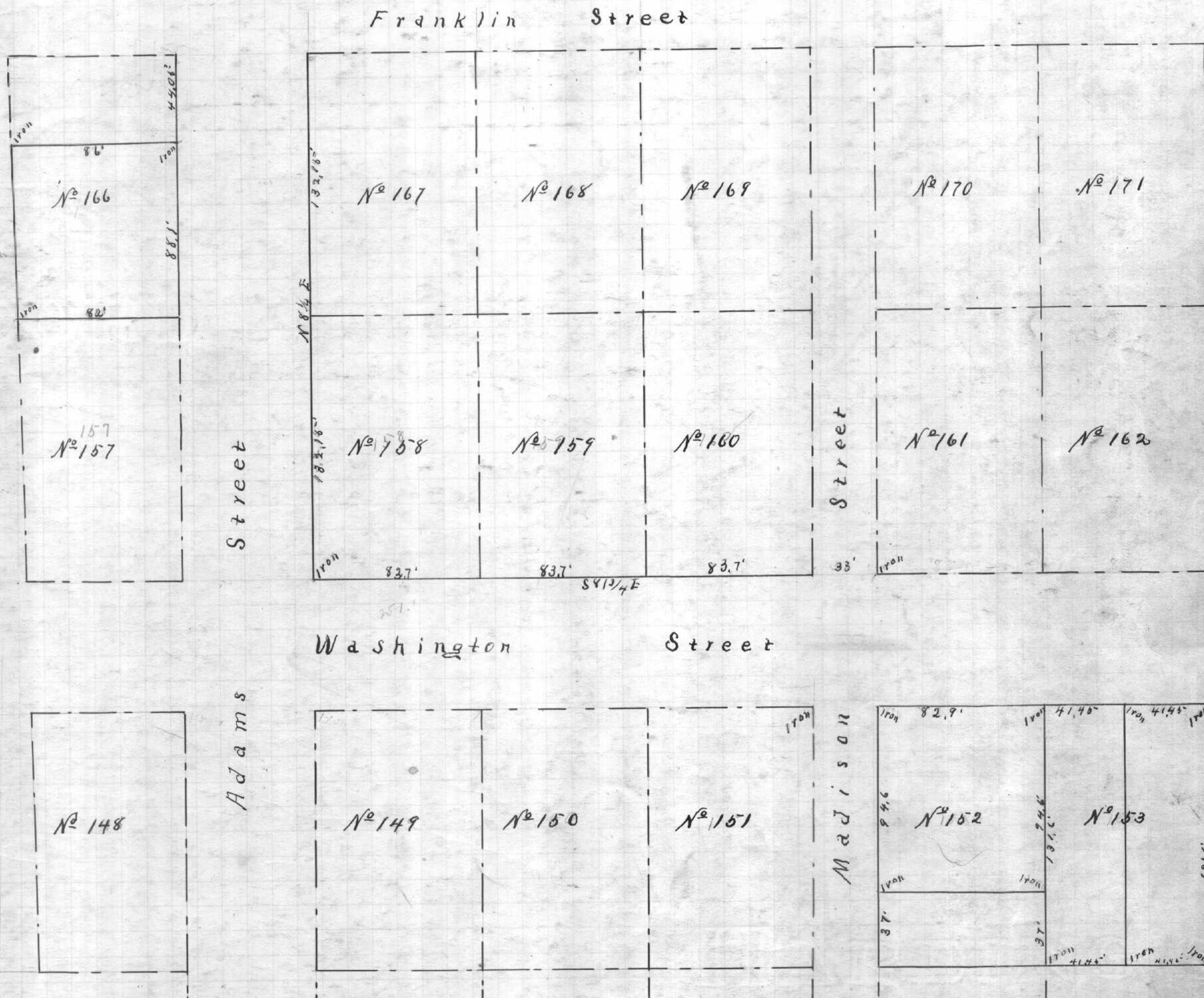
Scale of 5 chains to an inch
Corrected Bearings

Mulberry 15" S 54 E 35 1/2
This corner is N 72 1/2 E 27 links from
Corner as Given in Sands Deed

Surveyed April 20th 1905
Recorded June 29th 1905

D. H. Hibbard
Surveyor of Twp Co

Frank Tedrow and Others Surveys in Nelsonville



Scale of 50 feet to an inch

Surveyed April 25th & 26th 1905
Recorded June 29th 1905

D. H. Hibbard
Surveyor of Adams Co