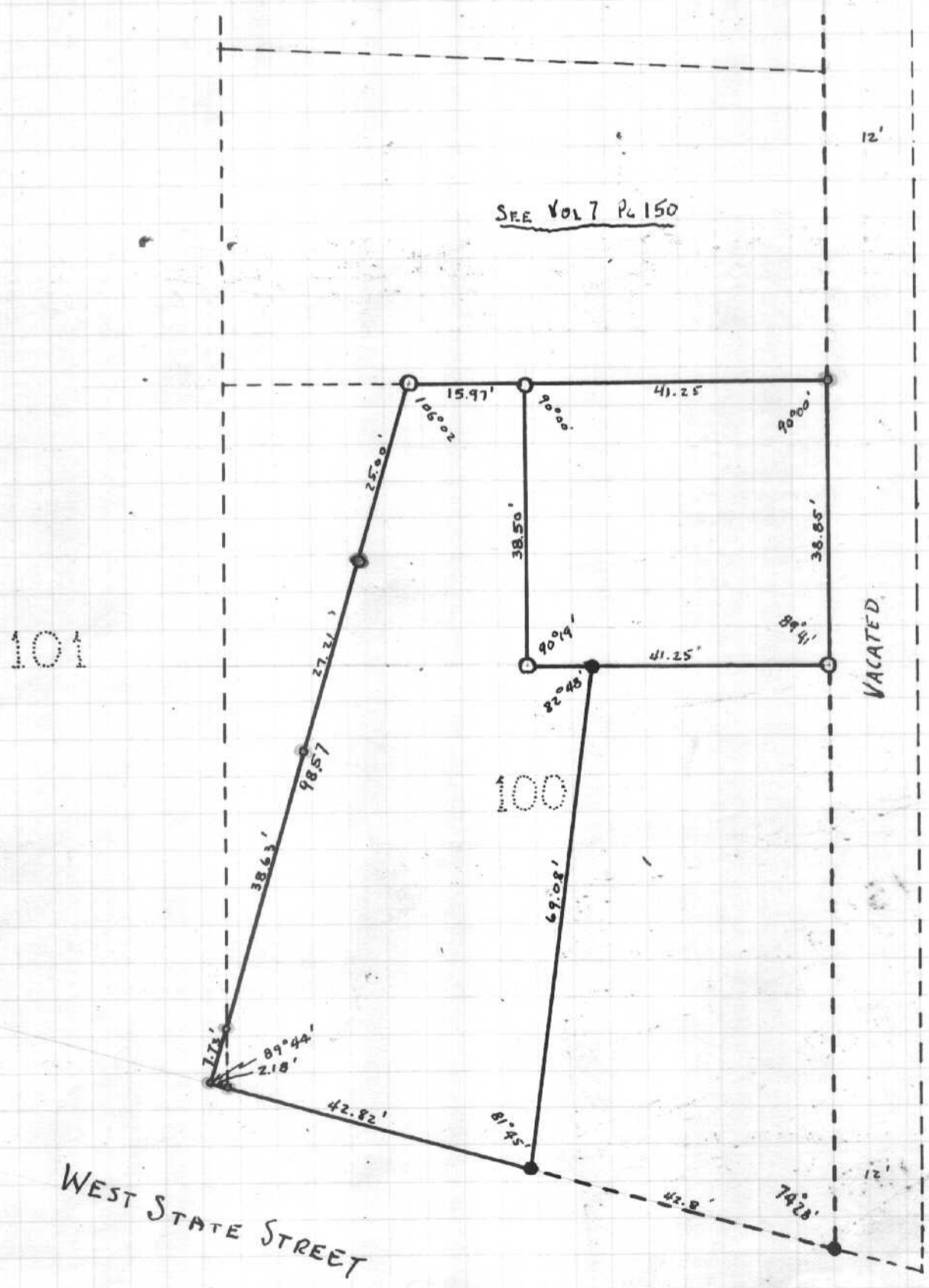


SURVEY OF AUGUSTUS D. TOWNSEND ESTATE IN LOTS 100 AND 101 IN THE CITY OF ATHENS

JUNE 1950  
GEORGE W. CLARK  
REG. SURV. 2364

Scale 1" = 20'

- AXLE SET
- PIN SET
- PIN FOUND
- HOLE DRILLED



PLATTING COMMISSION CORNER FOUND