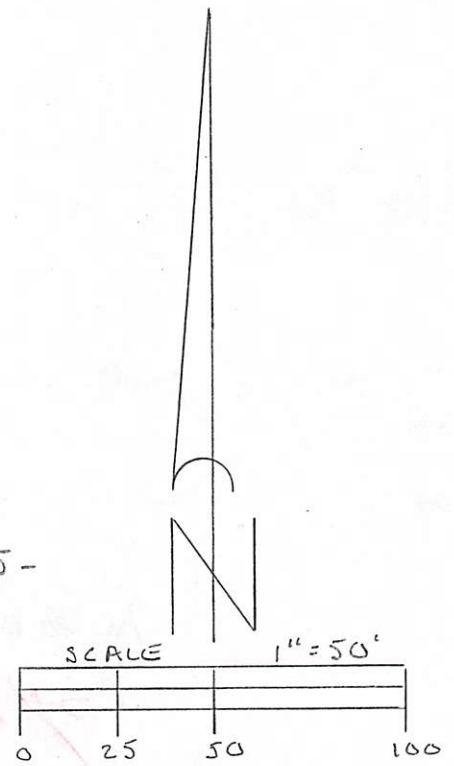




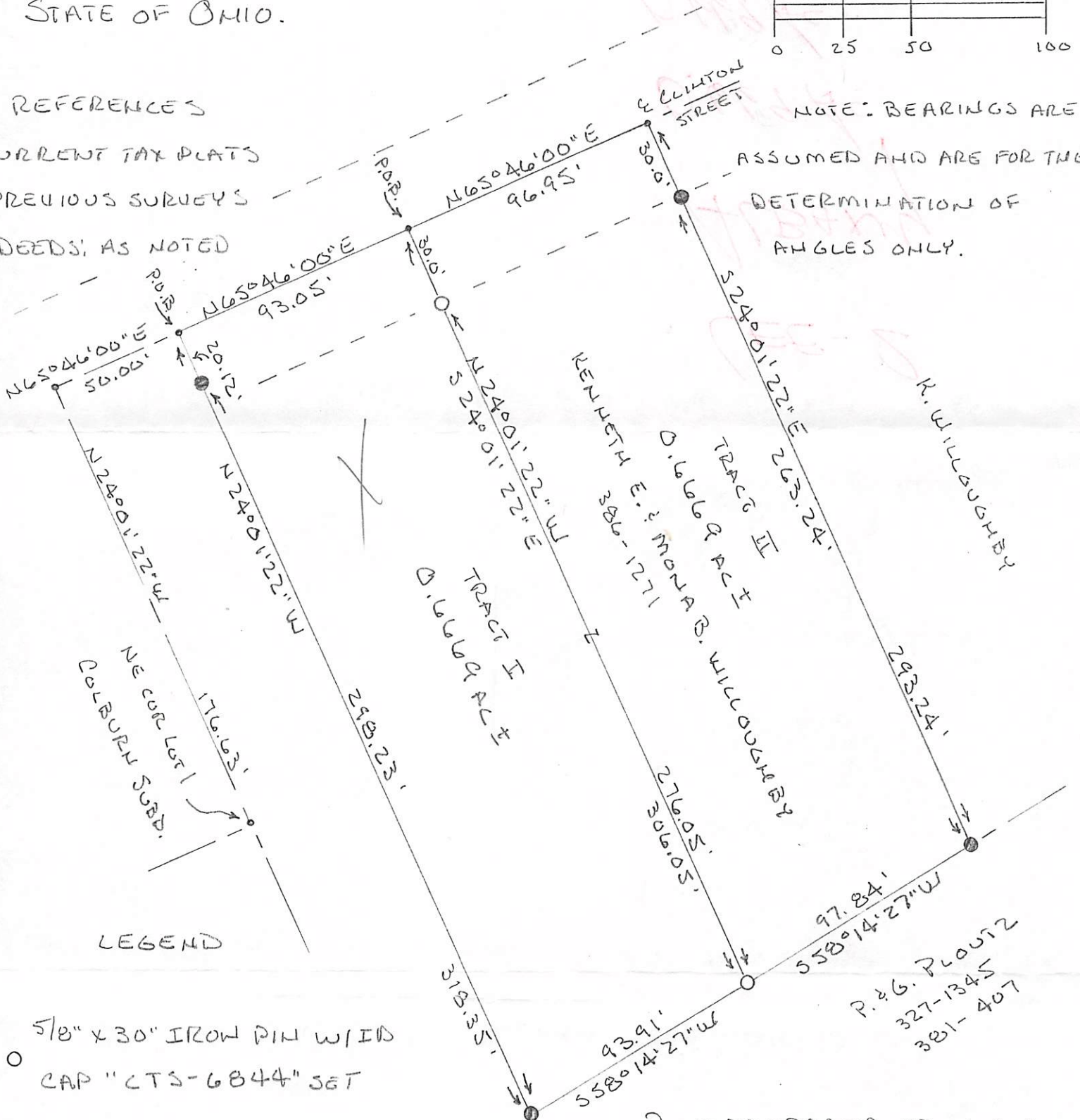
C. Thomas Smith & Associates
 P.O. Box 393
 Racine, Ohio 45771
 740-949-2524

BEING A PART OF ALBANY CORPORATION,
 SECTION 2, TOWNSHIP-10-NORTH, RANGE-15-
 WEST, LEE TOWNSHIP, ATHENS COUNTY,
 STATE OF OHIO.



REFERENCES
 CURRENT TAX PLATS
 PREVIOUS SURVEYS
 DEEDS: AS NOTED

NOTE: BEARINGS ARE
 ASSUMED AND ARE FOR THE
 DETERMINATION OF
 ANGLES ONLY.



Description Checked for
 Mathematical Accuracy
 Athens County
 ENGINEER'S OFFICE
 BY: S. Blause
 DATE: 7-12-04

C. T. Smith
 OHIO PROFESSIONAL SURVEYOR

No 6844