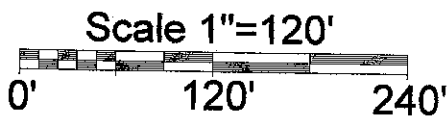
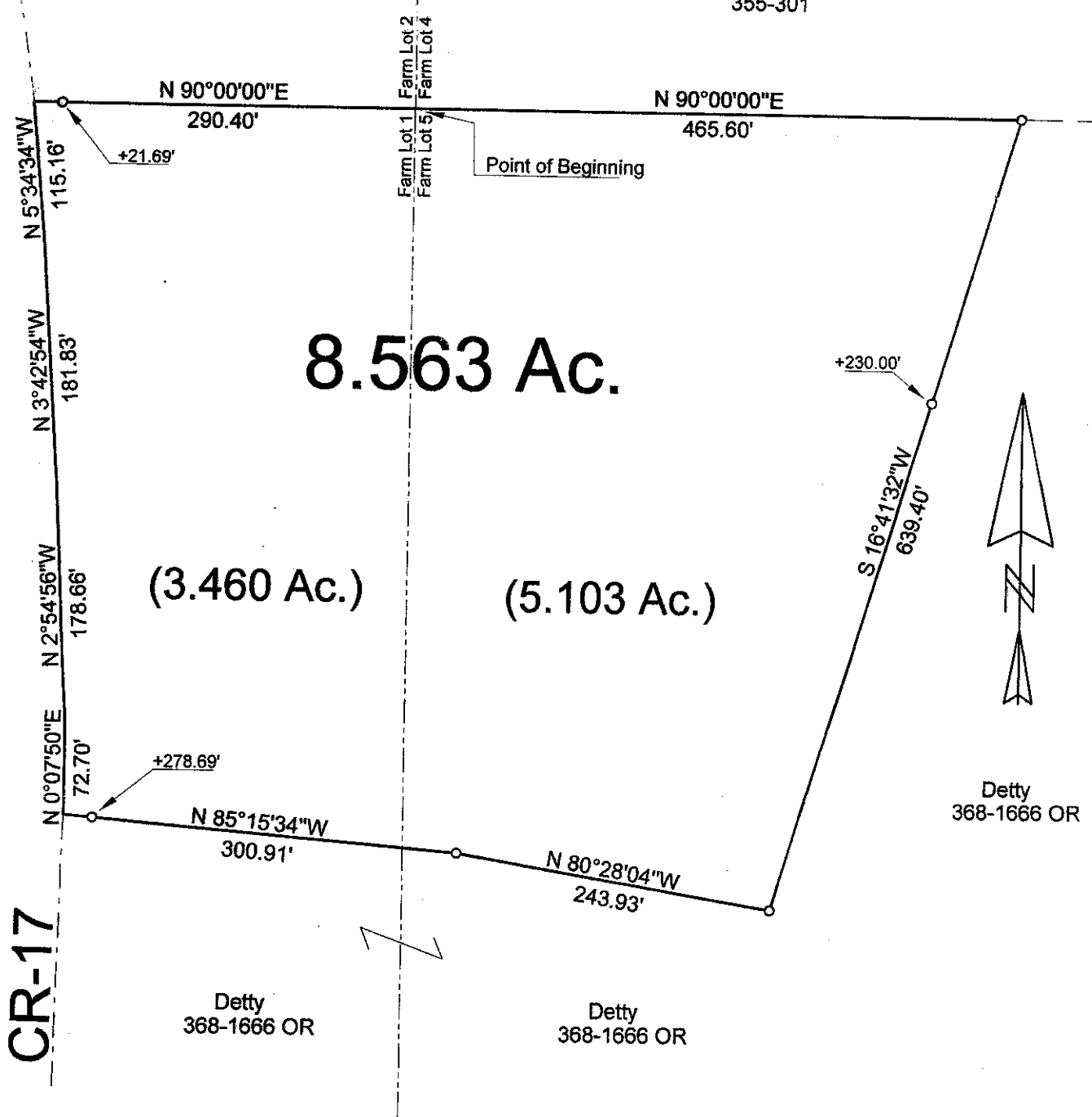


HIGHLAND SURVEYING Ltd.  
Registered Professional Land Surveyor

*Parcel greater than five (5) ac. to transfer per Athens  
County with road frontage. City-County Health Dept  
RPC approval not required.  
Bob Eichenberg 6-7-07*

Chase  
355-301

Chase  
355-301



O=Iron Pin Set

Description Checked for  
Mathematical Accuracy  
Athens County  
ENGINEER'S OFFICE  
BY: S. Blaise  
DATE: 6-1-07

PLAT OF SURVEY OF A 8.563 Ac. TRACT  
SURVEYED FOR DETTY/FLICKENGER  
SUBDIVISION FARM LOTS 1-5  
TOWNSHIP ALEXANDER SECTION 1-7 TOWN 8 RANGE 1  
CORPORATION — COUNTY ATHENS STATE OHIO  
SCALE 1"= 120' DATE MAY, 2007

Kenneth E. Highland  
80 Fayette St.  
Nelsonville, Ohio 45764  
740-753-1264

