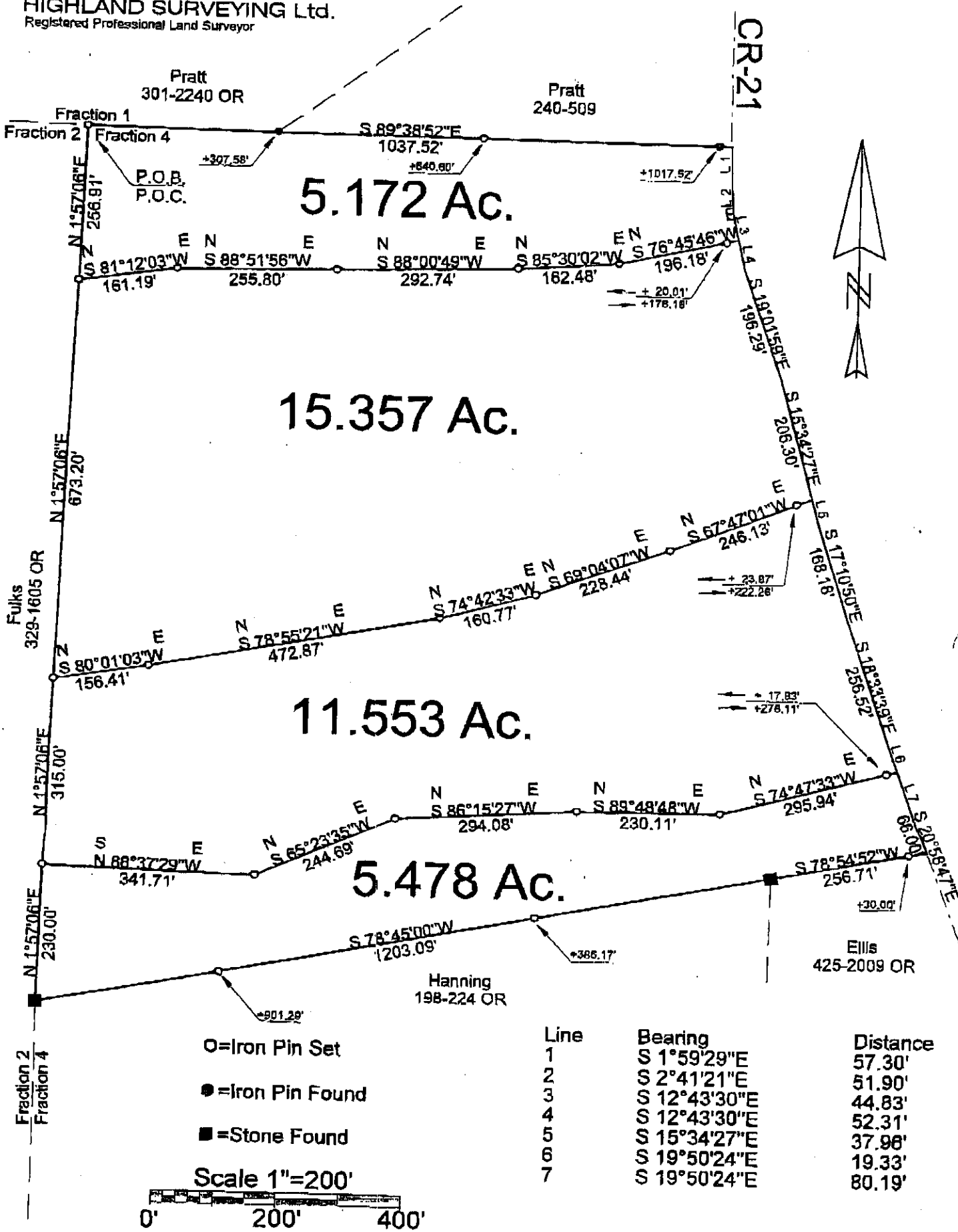


HIGHLAND SURVEYING Ltd.  
Registered Professional Land Surveyor



PLAT OF SURVEY OF 4 TRACTS  
 SURVEYED FOR RICK ELLIS  
 SUBDIVISION FRACTION 4  
 TOWNSHIP ALEXANDER SECTION 10 TOWN 8 RANGE 14  
 CORPORATION — COUNTY ATHENS STATE OHIO  
 SCALE 1"= 200' DATE JULY 2008

Description Checked for  
 Mathematical Accuracy  
 Athens County  
 ENGINEER'S OFFICE  
 BY: S. Blaise  
 DATE: 7-29-08

STATE OF OHIO  
 KENNETH E. HIGHLAND  
 S-7581  
 REGISTERED PROFESSIONAL LAND SURVEYOR

Kenneth E. Highland  
 86 Fayette St.  
 Nelsonville, Ohio 45764  
 740-753-1254

Kenneth E. Highland S-7581