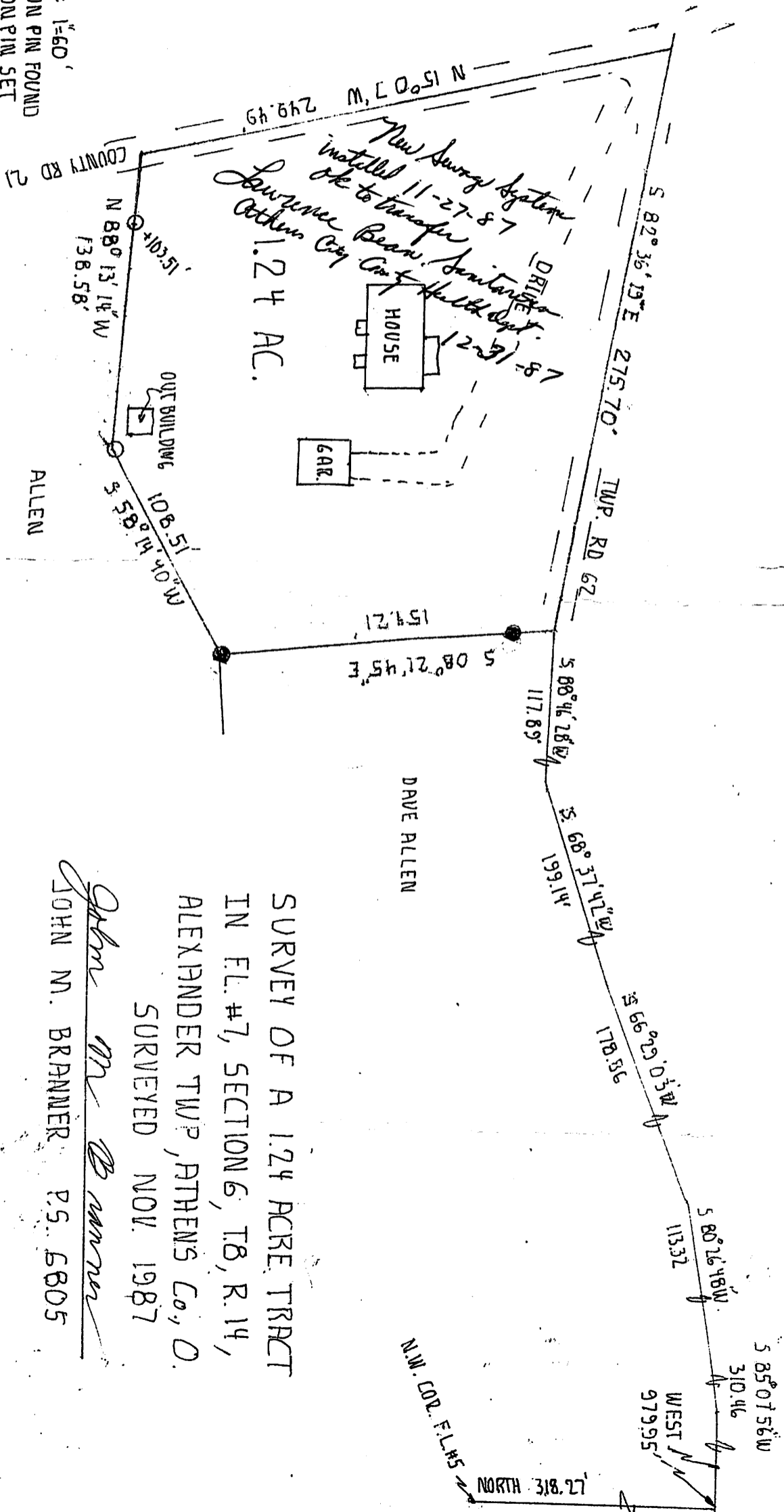


SCALE: 1"=60'  
 ●- IRON PIN FOUND  
 ○- IRON PIN SET



SURVEY OF A 1.24 ACRE TRACT  
 IN FL. #7, SECTION 6, T8, R. 14,  
 ALEXANDER TWP, ATHENS Co., O.  
 SURVEYED NOV. 1987

*John M. Branner*  
 JOHN M. BRANNER P.S. 5805

Alex-12

NE

1-24



# ATHENS COUNTY AUDITOR TAX PLAT

Approx. Scale 1" = 400' or 6 Chains

# SEC. 12

Alexander Twp.  
T 8 - R 14

