

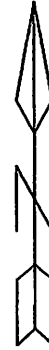


C. Thomas Smith  
Ohio Professional Surveyor  
P.O. Box 393  
Racine, Ohio 45771  
740-949-2524

Being a part of Farm Lot 4, Section 15, Township-8-North, Range-14-West, Alexander Township, Athens County, State of Ohio.

Note: Bearings are assumed and are for the determination of angles only.

All iron pins set are 5/8"X30" rebar with plastic ID cap stamped "CTS-6844".

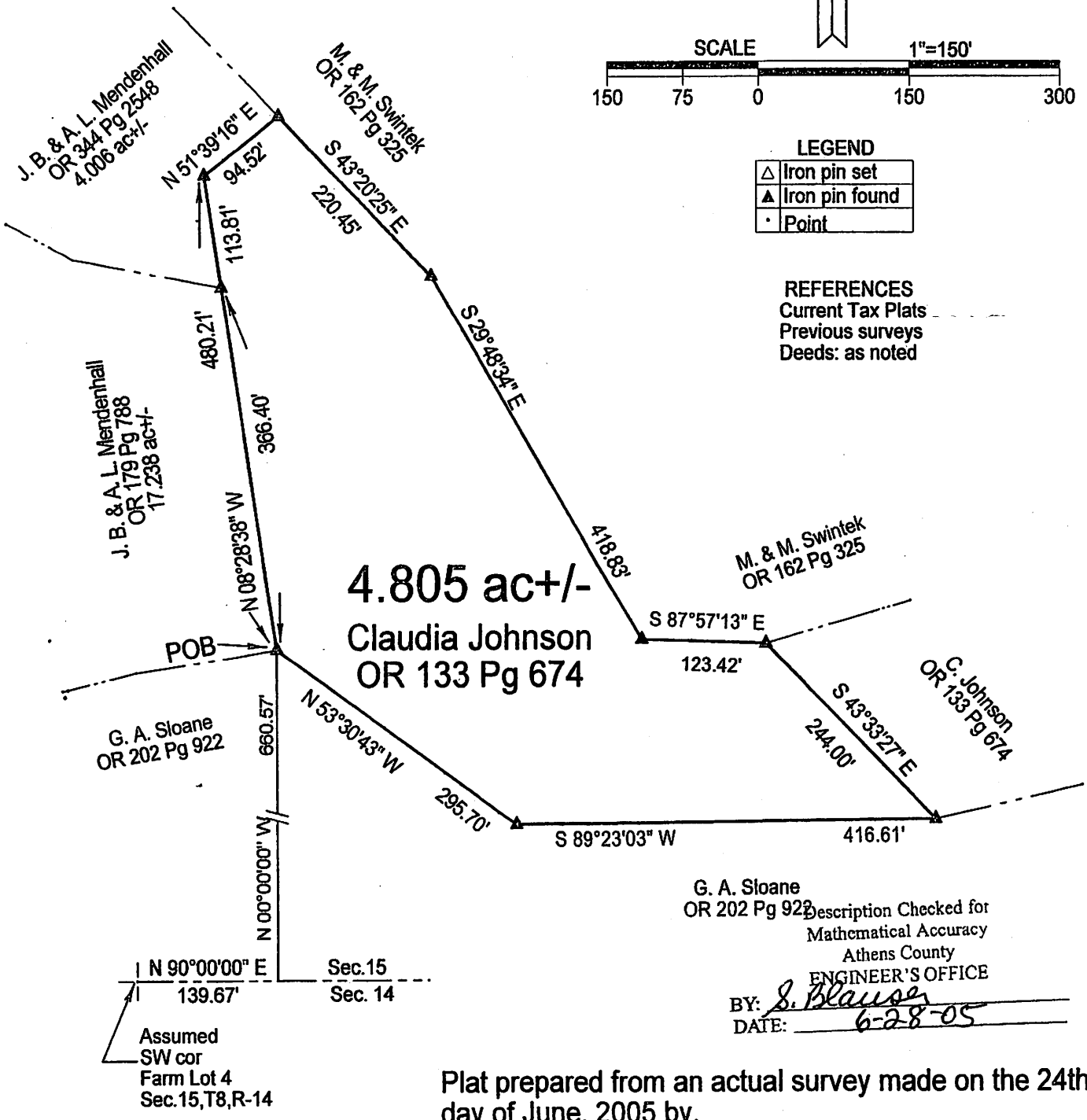


LEGEND

△	Iron pin set
▲	Iron pin found
•	Point

REFERENCES

Current Tax Plats  
Previous surveys  
Deeds: as noted



G. A. Sloane  
OR 202 Pg 922 Description Checked for  
Mathematical Accuracy  
Athens County  
ENGINEER'S OFFICE

BY: S. Blausen  
DATE: 6-28-05

Plat prepared from an actual survey made on the 24th day of June, 2005 by,

C. Thomas Smith  
Ohio Professional Surveyor  
No.6844

Note: The above tract is to be made a part of tracts recorded in Official Records Volume 344 at page 2548 and Official Records Volume 179 at page 788 and is to remain continuous and contiguous with said tracts.



4.805 Ac.

SW

Alex-15