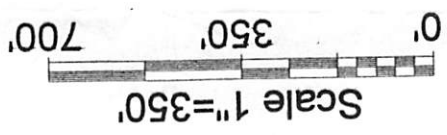


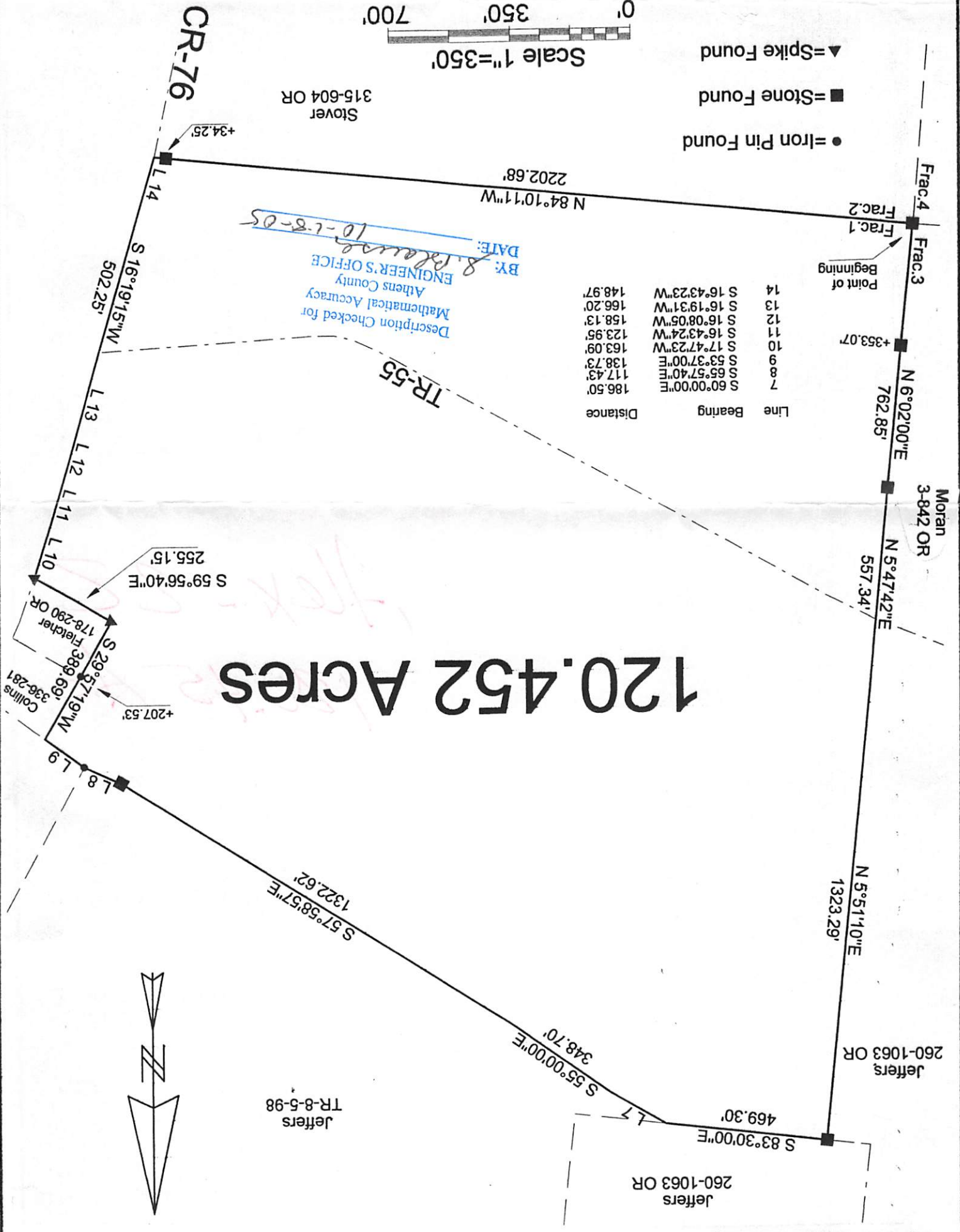
PLAT OF Survey PFA 120.452 Acres Tract  
 SURVEYED FOR Collins Estate  
 SUBDIVISION Fraction 1  
 TOWNSHIP Alexander SECTION 22 TOWN 8 RANGE 14  
 CORPORATION — COUNTY Athens STATE Ohio  
 SCALE 1" = 350' DATE Oct 2005  
 Kenneth E. Highland  
 80 Fayette St.  
 Nelsonville, Ohio 45764  
 740-753-1264  
 Kenneth E. Highland S-7581



- = Iron Pin Found
- = Stone Found
- ▲ = Spike Found

Line	Bearing	Distance
7	S 60°00'00"E	186.50'
8	S 65°57'40"E	117.43'
9	S 53°37'00"E	138.73'
10	S 17°47'23"W	163.09'
11	S 16°43'24"W	123.95'
12	S 16°08'05"W	158.13'
13	S 16°19'31"W	166.20'
14	S 16°43'23"W	148.97'

**120.452 Acres**



DESCRIPTION CHECKED FOR  
 ATHENS COUNTY  
 ENGINEER'S OFFICE  
 BY: *S. Blaine*  
 DATE: *10-1-8-05*



Alex - 22  
120.45 Ac.

