

DESCRIPTION OF A 11.63 ACRE TRACT

Situated in Farm-lots #1 &2, T.8 R.14, Alexander Township Township, Athens County, Ohio and being part of Tract 1 and all of Tract 5 as recorded in Volume 337, Page 155 of the Official Records of Athens County and being more particularly described as follows:

Beginning at an iron pin found in the East-line of Jeffery Chaddock (267-724 O.R.) said pin bears South 04 degrees 06 minutes 25 seconds West, 429.36 feet from a stone found at the North-west corner of Farm-Lot#1;

Thence, along new lines created by this survey:

South 89 Degrees 33 Minutes 43 Seconds East a distance of 831.54 feet to an iron pin set;

South 43 Degrees 47 Minutes 16 Seconds East a distance of 95.47 feet to an iron pin set;

South 43 Degrees 53 Minutes 51 Seconds West a distance of 240.31 feet to an iron pin set;

North 50 Degrees 20 Minutes 23 Seconds West a distance of 25.74 feet to an iron pin set;

South 44 Degrees 08 Minutes 12 Seconds West a distance of 504.23 feet to an iron pin set;

South 25 Degrees 10 Minutes 04 Seconds West a distance of 302.61 feet to a point in State Route 681

682; passing an iron pin set at 250.61 feet;

Thence, along said road:

North 62 Degrees 43 Minutes 33 Seconds West a distance of 390.59 feet;

North 59 Degrees 42 Minutes 54 Seconds West a distance of 111.97 feet;

North 47 Degrees 21 Minutes 11 Seconds West a distance of 62.59 feet;

Thence, leaving said road and along the line of Chaddock (267-724 O.R.)

North 52 Degrees 24 Minutes 05 Seconds East a distance of 288.87 feet to an iron pin found,
passing an iron pin found at 189.54 feet;

North 04 Degrees 06 Minutes 25 Seconds East a distance of 414.72 feet which is the point of beginning and containing 11.63 Acres of which 0.80 acres are in Farm-lot #1 and 10.83 acres are in Farm-lot #2.

Subject to all easements and rights of way of record

Iron pins set are 5/8" by 30" long rebar with plastic I.D. cap Stamped "Branner P.S. 6805"

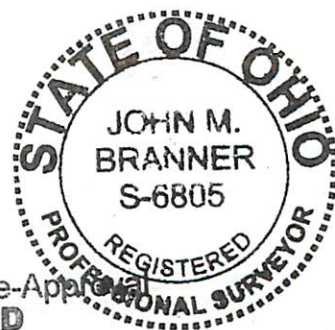
Bearings based on Grid North N.A.D. 83

The above description is based on a field survey completed March 2014 by John M. Branner P.S. 6805

J.M.B.
5-02-14

John M. Branner

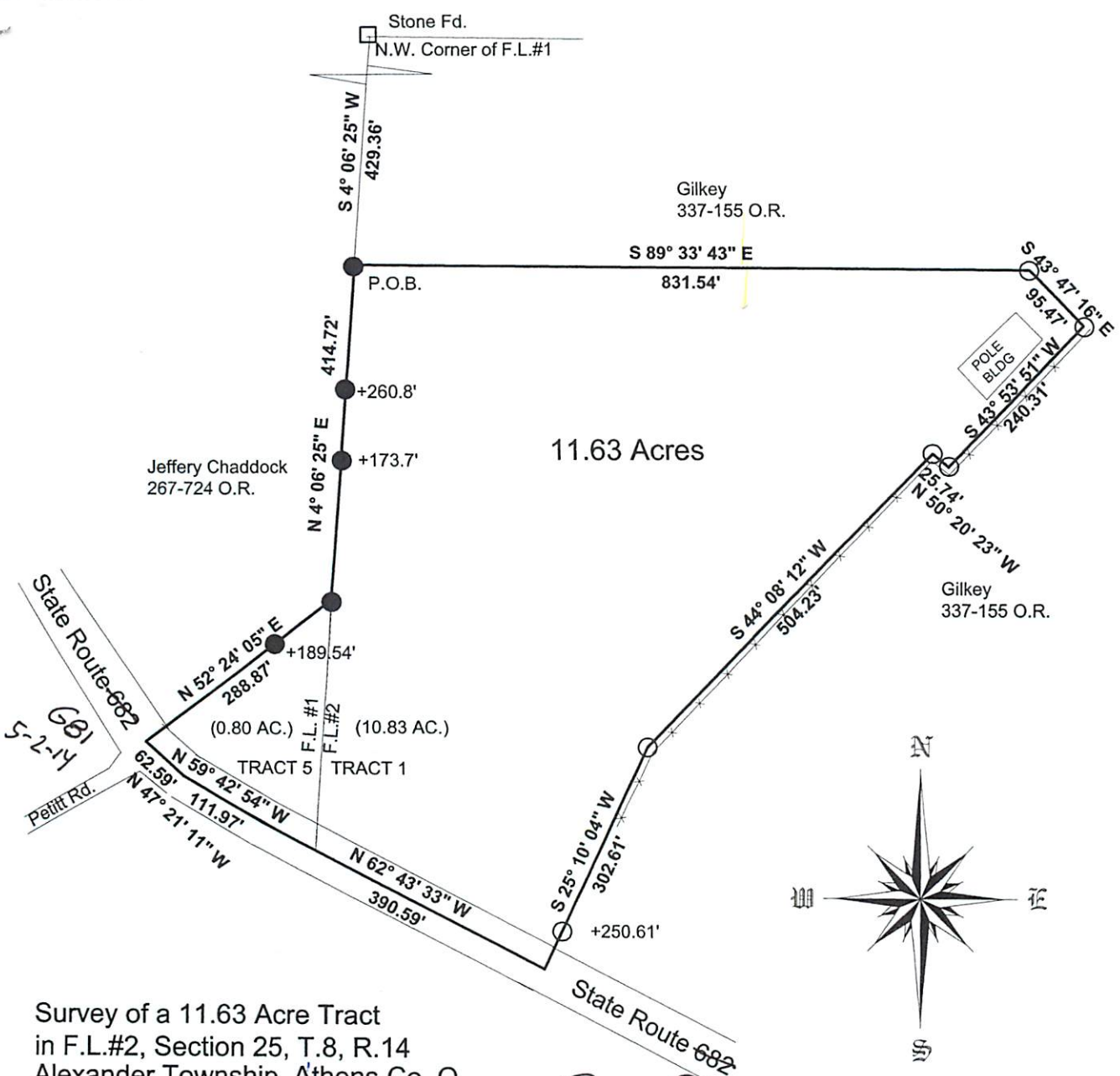
Description Checked for
Mathematical Accuracy
Athens County
ENGINEER'S OFFICE
BY: *Bruce...*
DATE: *3/12/14*



Legal Description Pre-Approval
APPROVED
All transfers are subject to
Athens County Conveyance Standards

MAR 13 2014

Jill Thompson
Athens County Auditor



Survey of a 11.63 Acre Tract
 in F.L.#2, Section 25, T.8, R.14
 Alexander Township, Athens Co., O.
 Surveyed March 2014

John M. Branner
 John M. Branner P.S. 6805
 62 East First Street
 The Plains, Ohio 45780
 740-541-0350



JMB
 5-2-14

Description Checked for
 Mathematical Accuracy
 Athens County
 ENGINEER'S OFFICE

BY: *Perench*
 DATE: *3/12/14*



Scale 1 inch = 200 feet

- = iron pin set 5/8"x30" long rebar
- = iron pin fd.

Bearings : Grid North, N.A.D. 83
 Ref. Docs.: Tax Plats-Deeds