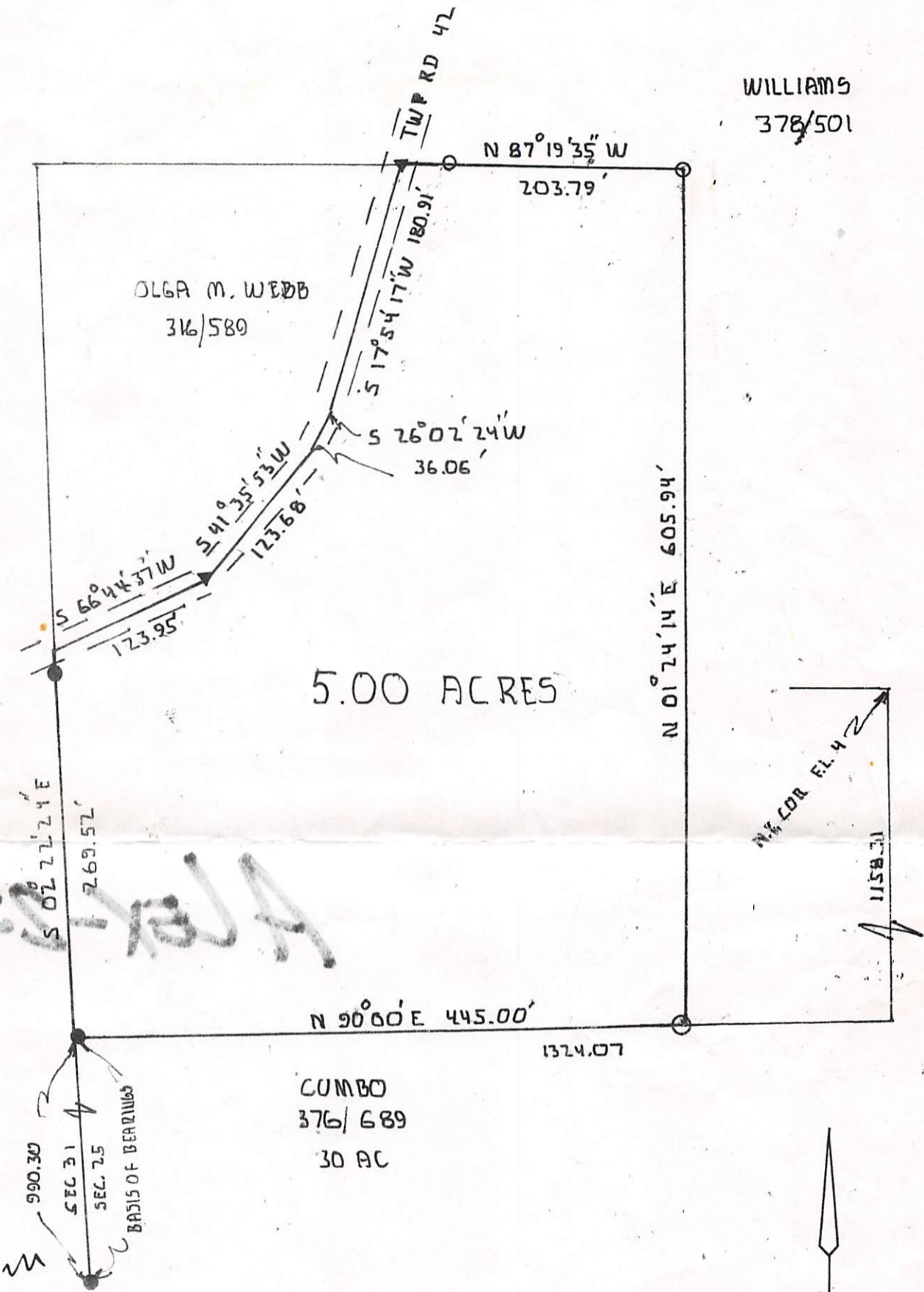


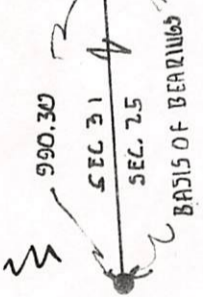
WILLIAMS
378/501



5.00 ACRES

OLGA M. WEBB
316/580

CUMBO
376/689
30 AC



PLAT OF SURVEY
 OF A 5.00 ACRE TRACT IN
 SECTION 25 T.8 R.14
 ALEXANDER TWP. ATHENS Co. O.

FOR HAROLD CLARK
 SURVEYED JULY 1990

John M. Branner
 JOHN M. BRANNER P.S. 6805



SCALE: 1"=100'
 ● = IRON PIN FOUND
 ○ = IRON PIN SET
 ▲ = R.R.S. FOUND

ALEX-25-3

SW

5.0 AC