

Exhibit A

Situate in Farm Lot 1, Section 32, Township 8, Range 14, Ohio Company Purchase; Alexander Township, Athens County, Ohio. Being a 22.079 acre part of Pine Lake Resort, LLC's Official Record 430 Page 475, more particularly described as follows:

Commencing and **Beginning** at a Stone Found at the southwest corner of Farm Lot 1.

Thence N05°00'46"E, 1187.38' along the east lines of Bonnie F. Nichols' O.R. 286 Pg. 1643 and Christopher Meeks' Deed Record 338 Pg. 1030 and O.R. 423 Pg. 1905 to a point, passing an iron pin found at 969.21'.

Thence S86°30'00"E, 381.87' along the south line of Russell Tad Gilkey's O.R. 36 pg. 109 to a point.

Thence S07°58'46"W, 198.00' along a line of Michael L. Meeks' O.R. 429 Pg. 908 to a point.

Thence S86°40'37"E, 198.11' continuing along a line of Michael L. Meeks' O.R. 429 Pg. 908 to a point.

Thence S01°06'32"E, 237.75' continuing along a line of Michael L. Meeks' O.R. 429 Pg. 908 to a point.

Thence N87°02'29"E, 199.49' continuing along a line of Michael L. Meeks' O.R. 429 Pg. 908 to a point.

Thence N85°47'08"E, 216.30' continuing along a line of Michael L. Meeks' O.R. 429 Pg. 908 to a point in the center of County Road 19 (Hebbardsville Rd.).

Thence S01°20'36"W, 472.01' along the center of CR 19 also being new lines through Pine Lake Resort, LLC's O.R. 430 Pg. 475 the next six courses:

- 1) Thence S19°00'16"W, 47.84' to a point in the center of CR 19.
- 2) Thence S40°55'30"W, 30.99' to a point in the center of CR 19.
- 3) Thence S50°31'34"W, 172.19' to a point in the center of CR 19.
- 4) Thence S28°22'46"W, 50.06' to a point in the center of CR 19.
- 5) Thence S03°58'51"W, 51.95' to a point in the center of CR 19.
- 6) Thence S14°35'39"E, 50.02' to a point in the center of CR 19 on the south line of Farm Lot 1.

Thence N86°30'00"W, 881.72' leaving the road along the south line of Farm Lot 1 and the north line of Loretta Allen's D.R. 366 Pg. 429 to the **Point of Beginning**, referenced by an iron pin found bearing S86°30'00"E, 31.04'.

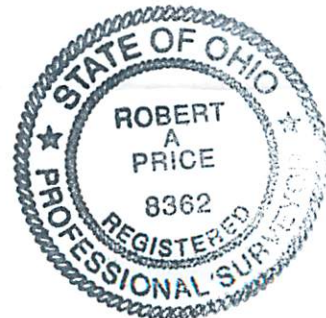
Containing 22.079 acres as surveyed by me, Robert A. Price PS 8362 in January 2011.

Basis of Bearings being the south line of Farm Lot 1 being N86°30'00"W and are to be used to determine angular relationships only.

Plat of Survey is attached herewith and made a part thereof.

Subject to all legal easements and rights of way.

Description Checked for  
Mathematical Accuracy  
Athens County  
ENGINEER'S OFFICE  
BY: C. Canterbury  
DATE: 3-7-11



Description Approved  
Jill A. Thompson  
Athens County Auditor



# PLAT of Survey

Situate in Farm Lot 1,  
Section 32, Township 8,  
Range 14, Ohio Company  
Purchase; Alexander  
Township, Athens County,  
Ohio.



I hereby certify that this Plat  
and Notes are correct as  
surveyed by me in January 2011.

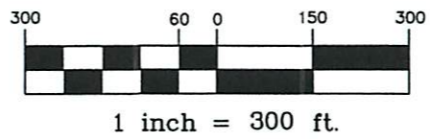
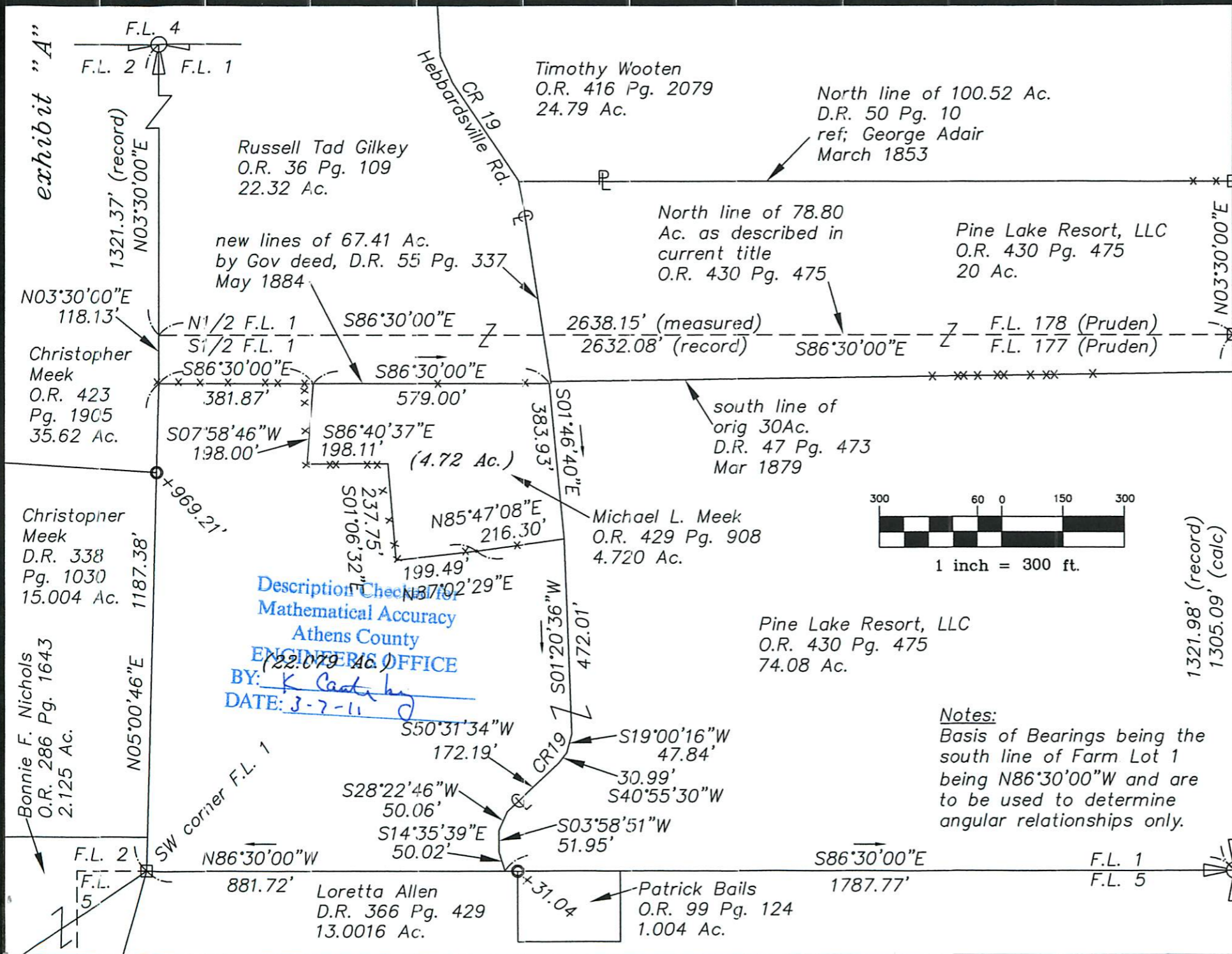
Robert A. Price PS8362

References:  
Tax Maps  
Deeds Listed  
Prior Surveys

Legend

- Stone Fd
- Iron Pin Fd
- × Fence

2172.dwg  
18Feb2011



Notes:  
Basis of Bearings being the  
south line of Farm Lot 1  
being N86°30'00\"W and are  
to be used to determine  
angular relationships only.

Description Checked for  
Mathematical Accuracy  
Athens County  
ENGINEERS OFFICE  
(22-079 Ac.)  
BY: *K. Coakley*  
DATE: 3-7-11

exhibit "A"

F.L. 3 373.25' (measured)  
381.48' (record)

F.L. 3 1321.98' (record)  
1305.09' (calc)

