

**BRANNER SURVEYING  
12500 N. PEACH RIDGE ROAD**

**DESCRIPTION OF 2.129 ACRE TRACT**

Situated in F.L. 5<sup>SEC.32</sup>T.8, R.14, Alexander Township, Athens county, Ohio and being more particularly described as follows:

Beginning at an iron pipe found at the South – east corner of a 1.790 acre tract said pipe calculated from deeds to bear South 1617.41 feet and West, 1424.04 feet from the North-east corner of Farm-lot #5

Thence, along Grantor's line North 01 degrees 52 minutes East, 190.09 feet to an iron pin set;

Thence, North 89 degrees 17 minutes 07 seconds East, 237.18 feet to an iron pin set in Grantor's East-line;

Thence, along Grantors lines, South 09 degrees 32 minutes 40 seconds West, 124.20 feet to an iron pin set;

Thence, South 05 degrees 11 minutes 30 seconds West, 242.31 feet to an iron pin set;

Thence, North 87 degrees 09 minutes West, 178.69 feet to a point in State Route 681, passing an iron pin set at 120.00 feet;

Thence, along said road, North 64 degrees 29 minutes 50 seconds West, 246.48 feet to a point;

Thence, along the aforementioned 1.790 acre tract, North 74 degrees 24 minutes 20 seconds East, 207.75 feet to the point of beginning and containing 2.129 acres

Subject to all easements and rights of way of record.

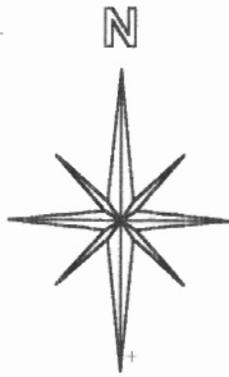
The above description is based on a field survey by John M. Branner P.S. 6805 completed October 2002.



Description checked for  
Mathematical Accuracy  
ATHENS COUNTY  
ENGINEER'S OFFICE  
BY: S. Blausch  
DATE: 10-4-02

13

ALX # 32



SCALE 1 INCH = 60 FEET

- = IRON PIN SET
- = IRON PIN FOUND
- BEARINGS USED TO DENOTE INTERIOR ANGLES ONLY

1.790 AC.

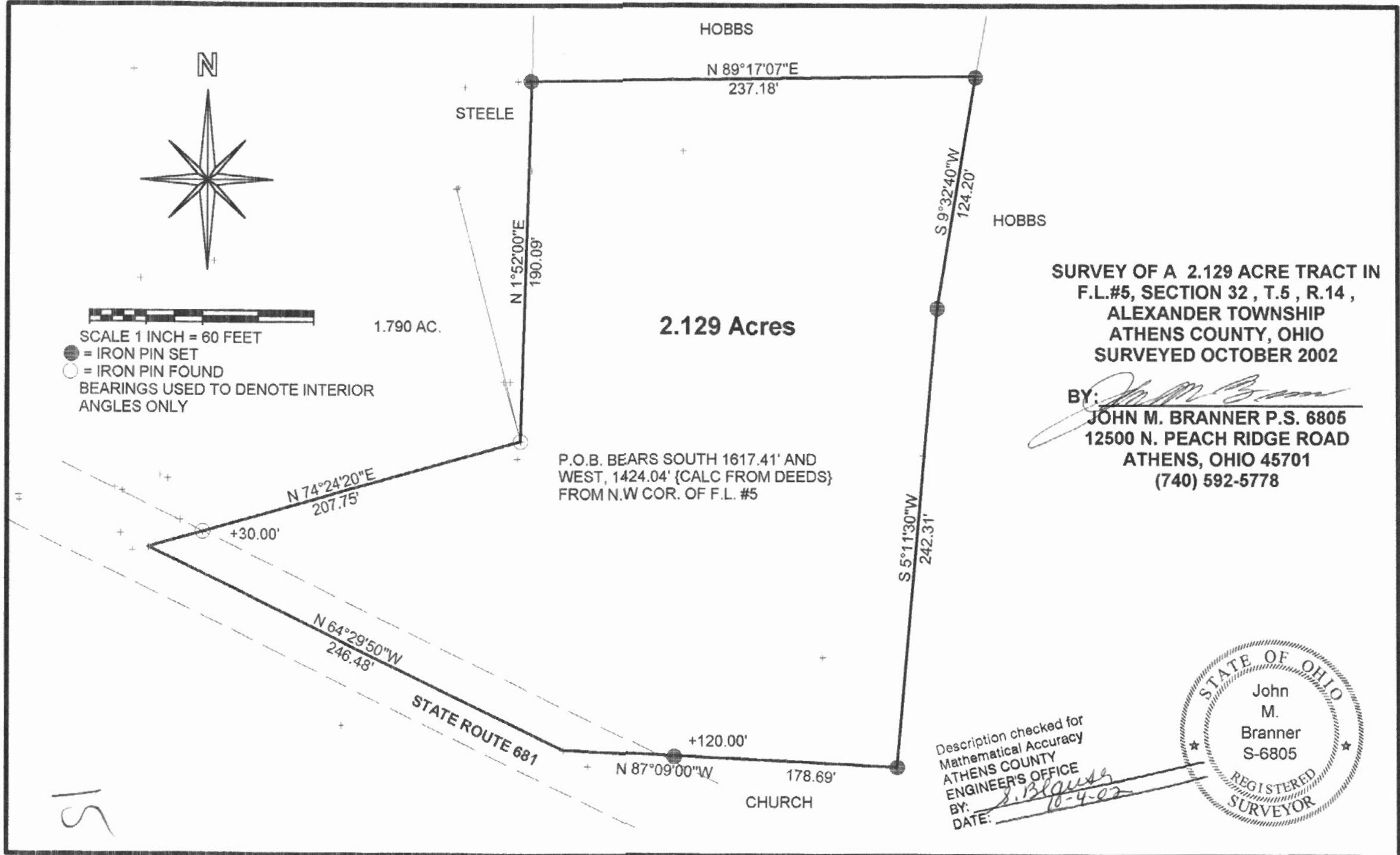
2.129 Acres

P.O.B. BEARS SOUTH 1617.41' AND WEST, 1424.04' {CALC FROM DEEDS} FROM N.W. COR. OF F.L. #5

**SURVEY OF A 2.129 ACRE TRACT IN  
 F.L.#5, SECTION 32, T.5, R.14,  
 ALEXANDER TOWNSHIP  
 ATHENS COUNTY, OHIO  
 SURVEYED OCTOBER 2002**

BY:   
**JOHN M. BRANNER P.S. 6805  
 12500 N. PEACH RIDGE ROAD  
 ATHENS, OHIO 45701  
 (740) 592-5778**

Description checked for  
 Mathematical Accuracy  
 ATHENS COUNTY  
 ENGINEER'S OFFICE  
 BY: S. Blau  
 DATE: 10-4-02



15