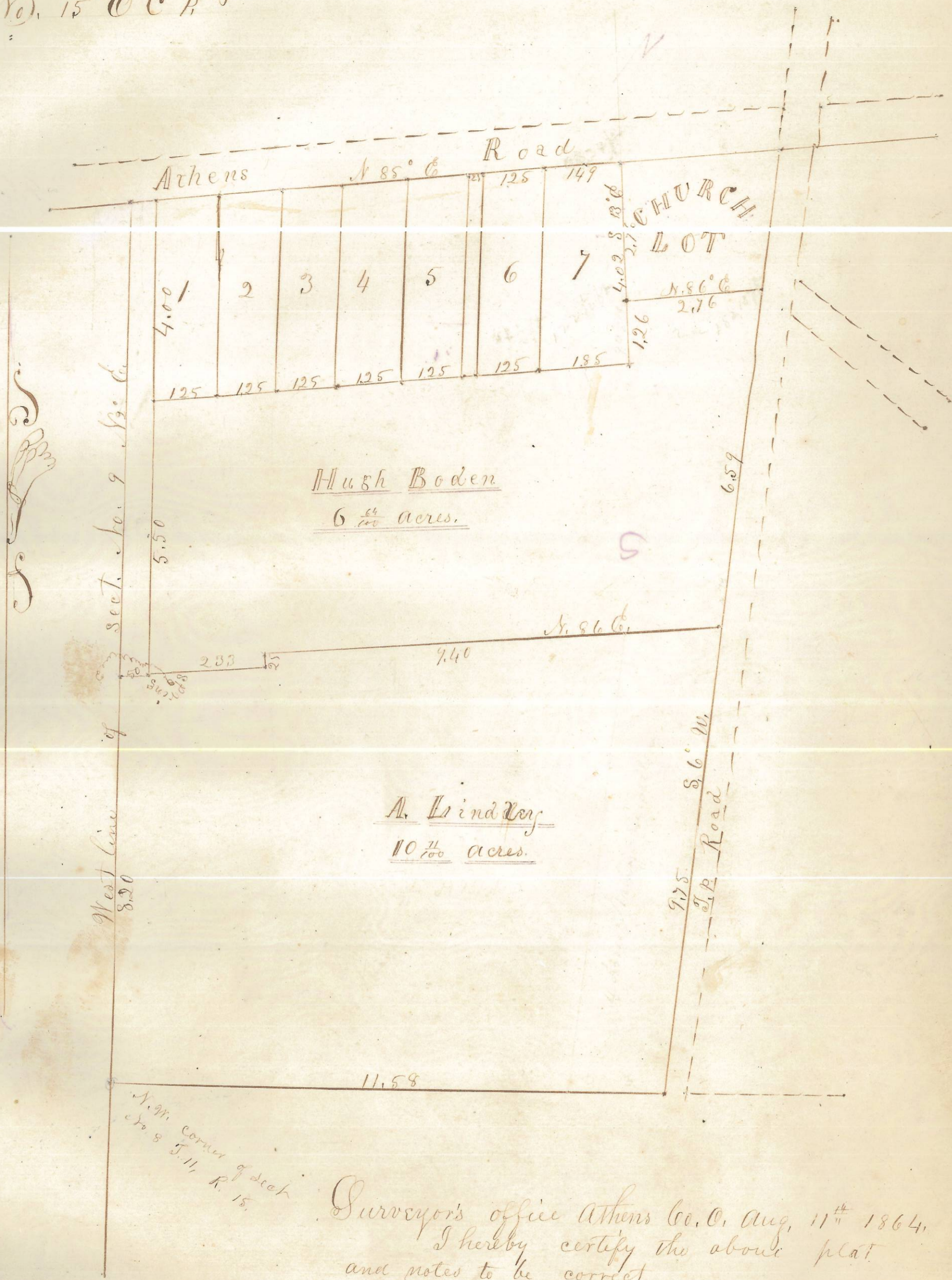


Notes of Almus Lindley's addition to the Village of Marshfield, being bound on the North by the Athens road, on the West by the West line of Section No. 9, the addition being in Fraction No. 2 Town No. 11 Range No. 15th Co. C R. 2nd



Surveyor's office Athens Co. O, Aug. 11th 1864.
I hereby certify the above plat
and notes to be correct.
John Ackley Co. S. of
Athens Co.

Entered for Record Oct. 11th A.D. 1864
and Recorded Oct. 20th A.D. 1864. Attest, Daniel Drake, Recorder.

ENVELOPE: 81C
ALMUS LINDLEY'S ADDITION -
MARSHFIELD
WATERLOO TWP