



# SOUTHEASTERN LAND SURVEYS

LEONARD F. SWOYER  
REGISTERED PROFESSIONAL LAND SURVEYOR

3428 Pleasant Hill Road  
Athens, Ohio 45701  
614/593-8701

Situated in Lease Lot 3, Section 1, Town 8, Range 14,  
Alexander Township, Athens County, Ohio and described as  
follows:

Commencing at the southeast corner of said Lease Lot 3; thence  
on an assumed bearing of North, a distance of 742.50 feet to a set  
iron pin at the southeast corner of a 35.6 acre tract described in  
Volume 35 Page 792 of the Athens County Deed Records; thence along the  
south line of said 35.6 acre tract North 89 degrees 22 minutes 02  
seconds West, a distance of 1746.65 feet to a point at the southwest  
corner of a 10 acre tract described in Volume 12 Page 25 of the Athens  
County Deed Records; thence along the west line of said ten acre  
tract North 0 degrees 03 minutes 20 seconds East, a distance of 799.65  
feet to a point in the center of Athens County Road 69, the northwest  
corner of said ten acre tract and THE TRUE POINT OF BEGINNING; thence  
continuing along said line, North 0 degrees 03 minutes 20 seconds  
East, a distance of 322.35 feet to a set iron pin at the northwest  
corner of aforesaid 35.6 acre tract; thence South 89 degrees 59  
minutes 02 seconds East, a distance of 1744.90 feet to a fence corner  
post at the northeast corner of said 35.6 acre tract; thence along the  
east line of said 35.6 acre tract South 0 degrees 01 minute 41 seconds  
East (passing a set iron pin at 346.24 feet) for a total  
distance of 361.24 feet to a point in the center of Athens County Road  
69; thence along the center of said Athens County Road 69 the following  
thirteen bearings and distances; South 81 degrees 53 minutes 22  
seconds West, a distance of 38.01 feet to a point; thence South 86  
degrees 38 minutes 17 seconds West, a distance of 88.39 feet to a  
point; thence South 89 degrees 32 minutes 42 seconds West, a distance  
of 110.26 feet to a point; thence North 87 degrees 59 minutes 08  
seconds West, a distance of 95.66 feet to a set railroad spike; thence  
North 85 degrees 39 minutes 06 seconds West, a distance of 754.14 feet  
to a set railroad spike; thence North 86 degrees 42 minutes 32 seconds  
West, a distance of 68.60 feet to a point; thence North 89 degrees 23  
minutes 15 seconds West, a distance of 73.32 feet to a point; thence  
South 89 degrees 21 minutes 30 seconds West, a distance of 76.38 feet  
to a point; thence South 87 degrees 53 minutes 17 seconds West, a  
distance of 81.86 feet to a point; thence South 80 degrees 30 minutes  
29 seconds West, a distance of 197.10 feet to a point; thence North 82  
degrees 14 minutes 05 seconds West, a distance of 70.01 feet to a  
point; thence North 68 degrees 24 minutes 42 seconds West, a distance

Description checked for  
Mathematical Accuracy

ATHENS COUNTY  
ENGINEER'S OFFICE

BY: *L. Pantenburg*

DATE: *7-27-98*

PROPERTY

CONSTRUCTION

SUBDIVISIONS

File # 1



# SOUTHEASTERN LAND SURVEYS

---

LEONARD F. SWOYER  
REGISTERED PROFESSIONAL LAND SURVEYOR

3428 Pleasant Hill Road  
Athens, Ohio 45701  
614/593-8701

of 27.46 feet to a point; thence North 78 degrees 30 minutes 59 seconds West, a distance of 38.15 feet to a point; thence South 81 degrees 29 minutes 15 seconds West, a distance of 35.42 feet to a point; the POINT OF BEGINNING; and containing 13.561 acres, and being a part of a 35.6 acre tract described in Volume 35 Page 792 of the Athens County Deed Records.

Note: Unless otherwise noted, all set iron pins are 5/8 inch diameter rebar and 30 inches in length and capped with a plastic identification marker inscribed Leonard F. Swoyer R.L.S. 6765.

The above description was prepared under the supervision of Leonard F. Swoyer Registered Professional Land Surveyor No. 6765 and based on a survey performed by Southeastern Land Surveys dated August 26, 1993.

Subject to all easements and right of ways of record.

PROPERTY

CONSTRUCTION

SUBDIVISIONS

2



# SOUTHEASTERN LAND SURVEYS

LEONARD F. SWOYER  
REGISTERED PROFESSIONAL LAND SURVEYOR

3428 Pleasant Hill Road  
Athens, Ohio 45701  
614/593-8701

Situated in Lease Lot 3, Section 1, Town 8, Range 14, Alexander Township, Athens County, Ohio and described as follows:

Commencing at the southeast corner of said Lease Lot 3; thence on an assumed bearing of North, a distance of 742.50 feet to a set iron pin at an approximate fence corner, the TRUE POINT OF BEGINNING; thence along the north property line of a 29.26 acre tract described in Volume 12 Page 25 of the Athens County Official Deed Records North 89 degrees 26 minutes 46 seconds West a distance of 1218.63 feet to a fence corner post; thence along the west line of a 35.6 acre tract described in Volume 35 Page 792 of the Athens County Official Deed Records North 0 degrees 30 minute 32 seconds West, a distance of 821.66 feet to a point in the center of Athens County Road 69; thence along the center of said Athens County Road 69 the following six bearings and distances: South 89 degrees 23 minutes 15 seconds East, a distance of 73.32 feet to a point; thence South 86 degrees 42 minutes 32 seconds East, a distance of 68.60 feet to a set railroad spike; thence South 85 degrees 39 minutes 06 seconds East, a distance of 754.14 feet to a set railroad spike; thence South 87 degrees 59 minutes 08 seconds East, a distance of 95.66 feet to a point; thence North 89 degrees 32 minutes 42 seconds East, a distance of 110.26 feet to a point; thence North 86 degrees 38 minutes 17 seconds East, a distance of 88.39 feet to a point; thence North 81 degrees 53 minutes 22 seconds East, a distance of 38.01 feet to a point; thence leaving the said Athens County Road 69 and along the east property line of the aforesaid 35.6 acre tract South 0 degrees 01 minute 41 seconds East (passing a set iron pin at 55.00 feet) for a total distance of 779.56 feet to the POINT OF BEGINNING; and containing 22.156 acres, and being a part of 35.6 acre tract described in Volume 35 Page 792 of the Athens County Official Deed Records.

Note: Unless otherwise noted, all set iron pins are 5/8 inch diameter rebar and 30 inches in length and capped with a plastic identification marker inscribed Leonard F. Swoyer R.L.S. 6765.

Description checked for  
Mathematical Accuracy  
ATHENS COUNTY  
ENGINEER'S OFFICE

BY: L. Cantelberry  
DATE: 7-27-98

The above description was prepared under the supervision of Leonard F. Swoyer Registered Professional Land Surveyor No. 6765 and based on a survey performed by Southeastern Land Surveys dated August 26, 1993.

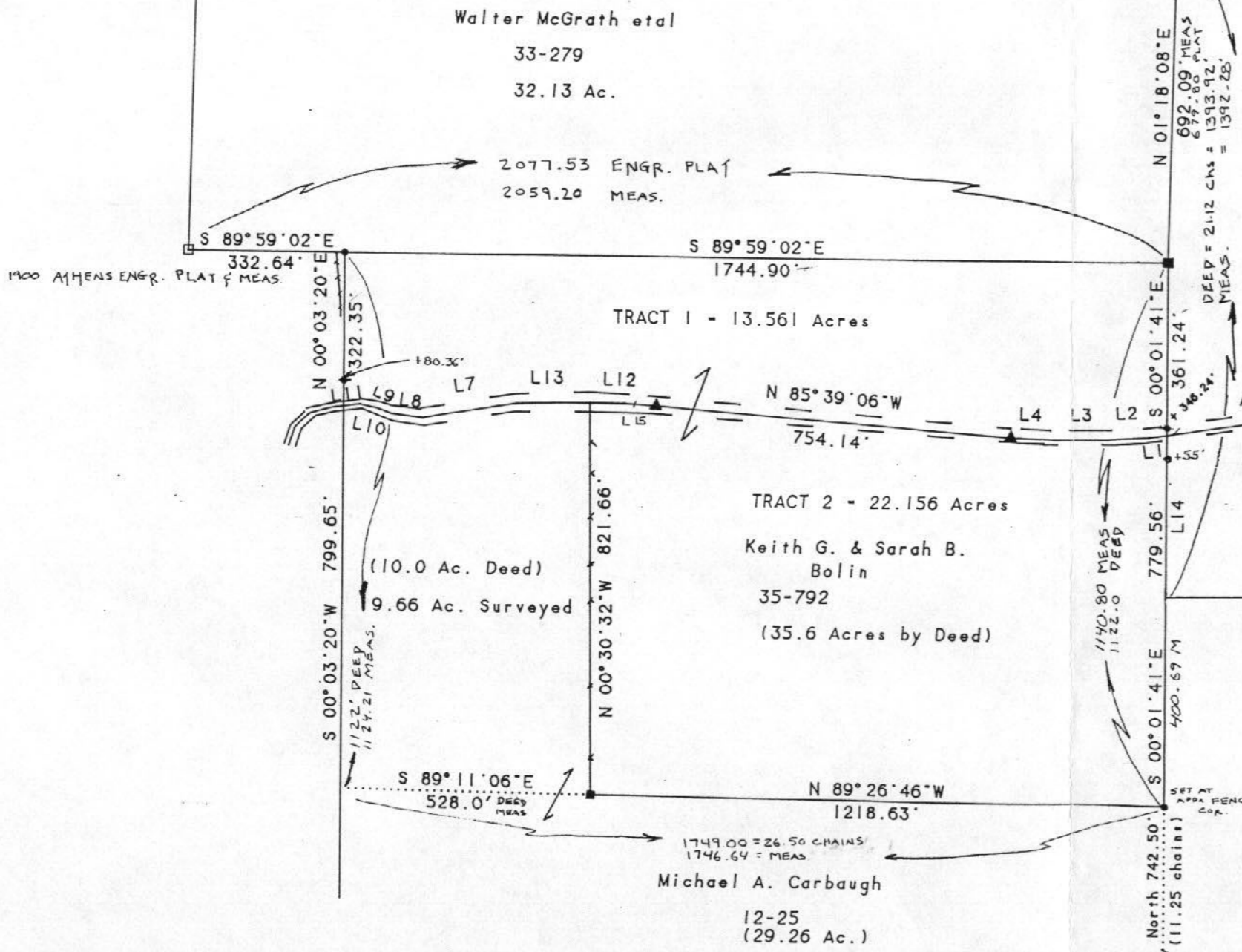
Subject to all easements and right of ways of record.

PROPERTY

CONSTRUCTION

SUBDIVISIONS

5



LINE	BEARING	DISTANCE
L 1	S 81° 53' 22" W	38.01'
L 2	S 86° 38' 17" W	88.39'
L 3	S 89° 32' 42" W	110.26'
L 4	N 87° 59' 08" W	95.66'
L 5	N 86° 42' 32" W	68.60'
L 6	S 87° 53' 17" W	81.86'
L 7	S 80° 30' 29" W	197.10'
L 8	N 82° 14' 05" W	70.01'
L 9	N 68° 24' 42" W	27.46'
L 10	N 78° 30' 59" W	38.15'
L 11	S 81° 29' 15" W	35.42'
L 12	N 89° 23' 15" W	73.32'
L 13	S 89° 21' 30" W	76.38'
L 14	S 00° 01' 41" E	338.97'
L 15	S 86° 42' 32" E	68.60'

Plat of Survey of Two Tracts

TRACT 1 - 13.561 ACRES

TRACT 2 - 22.156 ACRES

Located in Lease Lot 3, Section 1, Town 8, Range 14, Alexander Township, Athens County, Ohio

For Keith Bolin August 26, 1993

Prepared By Southeastern Land Surveys

*Leonard F. Swoyer*  
Leonard F. Swoyer P.L.S. 6768

Description checked for  
Mathematical Accuracy  
ATHENS COUNTY  
ENGINEER'S OFFICE  
BY: *L. Swoyer*  
DATE: 7-27-98

Lease Lot 3  
Lease Lot 4

8

9