

BRANNER SURVEYING
12500 N. PEACH RIDGE ROAD
ATHENS, OHIO 592-5778

Situated in Section 1 and Section 7 of T.8, R.14, Alexander Township, Athens County, Ohio and being more particularly described as follows:

Beginning at a post at the South-west corner of Section 1, T.8, R.14,;
thence, along the South-line of Section 7 South 89 degrees 18 minutes 21 seconds West, a distance of 680.46 feet to a railroad spike set in Athens County Road 17;
thence, along said road, North 25 degrees 51 minutes 42 seconds East, a distance of 639.85 feet to a railroad spike set;
thence North 13 degrees 23 minutes 01 second East, a distance of 177.14 feet to a point in the intersection of County Road 17 with Alexander Township Road 416;
thence, along Township Road 416, South 36 degrees 21 minutes 17 seconds East, a distance of 234.87 feet;
thence South 64 degrees 44 minutes 00 seconds East, a distance of 486.31 feet;
thence South 45 degrees 51 minutes 00 seconds East, a distance of 221.93 feet;
thence South 34 degrees 28 minutes 39 seconds East, a distance of 221.32 feet to a point in the South line of Section 1 of Alexander Township;
thence, along said line South 89 degrees 18 minutes 21 seconds West, a distance of 503.27 feet to the POINT OF BEGINNING; said described tract containing 10.26 acres.

Subject to all easements and rights of way of record.

The bearings are assumed and all iron pins set at 5\8" rebar and 30 inches long.

The above description is based on a field survey completed February, 1995 by John M. Branner P.S. 6805

John M. Branner

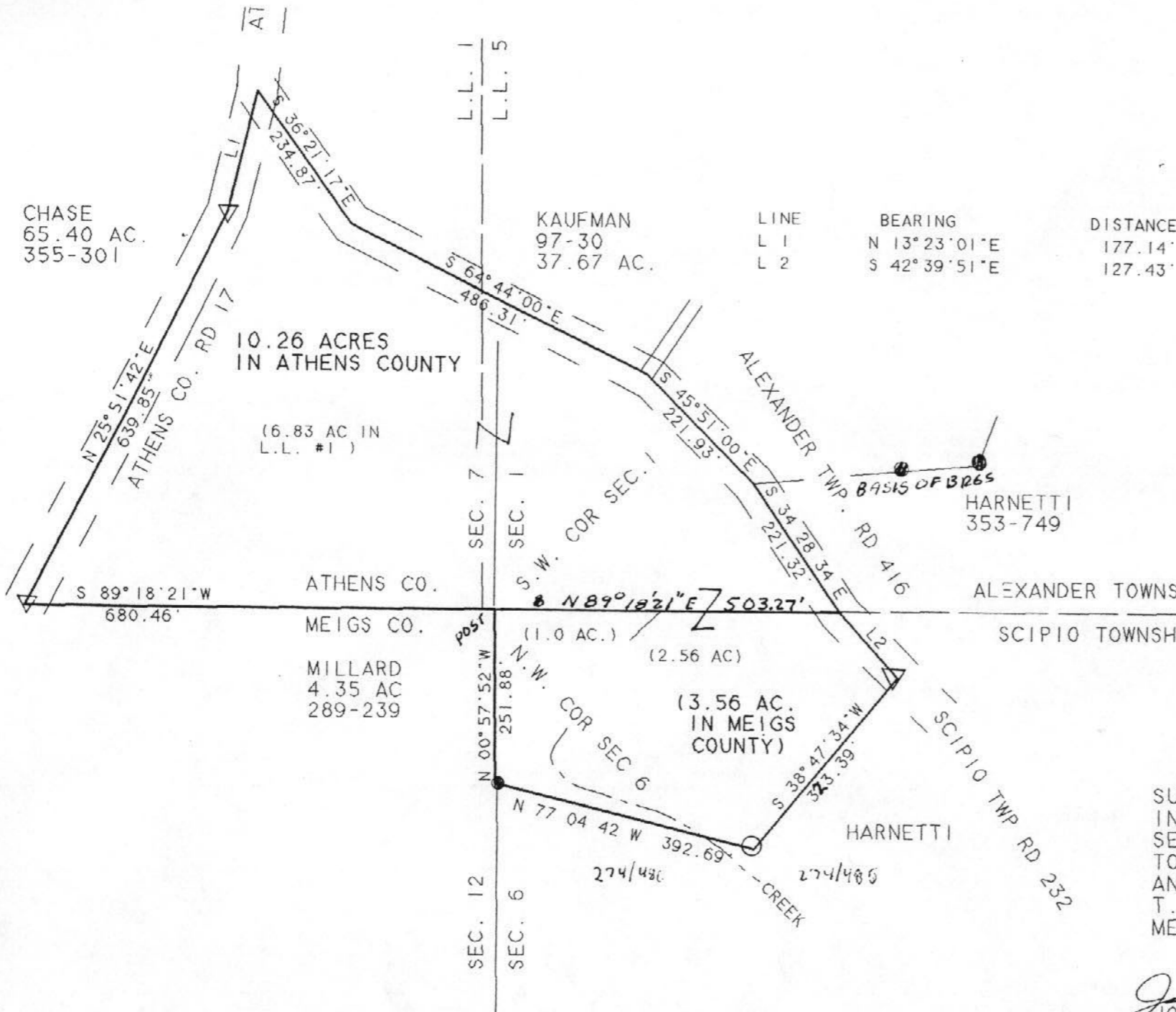
Reviewed and approved by
Notary Public, Athens County, Ohio
S. Blausen
DATE *2-15-95*

Plot 1-7

1

ALX #14#7

2



SCALE 1 INCH = 200 FEET
 O - IRON PIN SET 5/8" REBAR
 ● - IRON PIN FOUND
 ASSUMED BEARINGS BASED
 ON V. 353, PG 749 ATHENS
 CO. DEED RECORDS

PERTINENT DOCUMENTS
 TAX MAPS DEEDS
 PREVIOUS SURVEYS

SURVEY OF A 10.26 ACRE SURVEY
 IN L.L. 1 SECTION 7 AND L.L. 5,
 SEC. 1 OF T.8, R.14 ALEXANDER
 TOWNSHIP, ATHENS COUNTY, OHIO
 AND 3.56 ACRES IN SECTION 6,
 T.7, R.14, SCIPIO TOWNSHIP,
 MEIGS COUNTY, OHIO

SURVEYED FEB. 1995

John M. Branner
 JOHN M. BRANNER P.S. 6805
 12500 N. PEACH RIDGE ROAD
 ATHENS, OHIO 592-5778