

DESCRIPTION OF A 60.976 ACRE TRACT

Situated in Farmlots 1 and 5 in Sections 1 and 7, T. 8, R. 14 Alexander Township, Athens County, Ohio, and being a part of Tract I and Tract II as described in Volume 353, page 749, Athens County deed records, Athens County, Ohio, and being more particularly described as follows:

Beginning at a railroad spike in Athens County Road 17 and the north line of Farmlot #1 of Section 7, Alexander Township; said railroad spike bearing West, 290.40 feet from the northeast corner of Farmlot #1; thence, East, 2121.45' along the north line of Farmlot #1, Section 7 and the north line of Farmlot #5, Section 1 to an iron pin; thence, S 11° 48' 30" E, 583.58' to an iron pin; thence, S 56° 44' W, 1120.98' to an iron pin; thence, N 83° 51' 30" W, 99.94' to an iron pin; thence, S 19° 52' W, 478.09' to an iron pin; thence, S 84° 20' W, 325.30' to a point on a bridge in Alexander Township Road 416-A (17-B), passing an iron pin at 100.00'; thence, along said road the following bearings and distances:

N 45° 51' W, 221.93' to a point;
N 64° 44' W, 486.31' to a point;
N 36° 21' 17" W, 234.87' to a point;

in the intersection of Alexander Township Road 416-A (17-B) and Athens County Road 17; thence along Athens County Road 17 N 7° 00' E, 560.40' to a point; thence, N 5° 00' W, 551.76' to a railroad spike, said railroad spike being the point of beginning and containing 8.097 acres in Farmlot 1, and 52.879 acres in Farmlot 5, for a total of 60.976 acres. Subject to all rights of way and easements of record.

Prepared by

William M. Watkins
William M. Watkins
Reg. Surveyor 5216

Description checked for
Mathematical Accuracy
ATHENS COUNTY
ENGINEER'S OFFICE
BY: Cheryl Hedges
DATE: 4/18/91

Alx 17

AL

ROBERT A. CARBAUGH
234/140
57.76 AC



SCALE 1" = 200'
⊙ = IRON PIN

2121.45'

76 Ac

S 11° 48' 30" E
583.58'

79 Ac

S 56° 44' W
1120.98'

WILLIAM H. HARNETTY
353/749

N 83° 51' 30" W
99.94'

SURVEY OF A 60.976 AC. TRACT (8.097 AC
IN FARM LOT-1) AND 52.879 AC. IN
FARM LOT-5, TOWN-B, RANGE-14
ALEXANDER TWP ATHENS Co., OHIO
FOR HARNETTY + DIX

SURVEYED JANUARY, 1981

William M. Watkins

WILLIAM M. WATKINS
REG. SURVEYOR-5216

A)

ATHENS COUNTY
MEIGS COUNTY



2

SECTION-7

SECTION-1

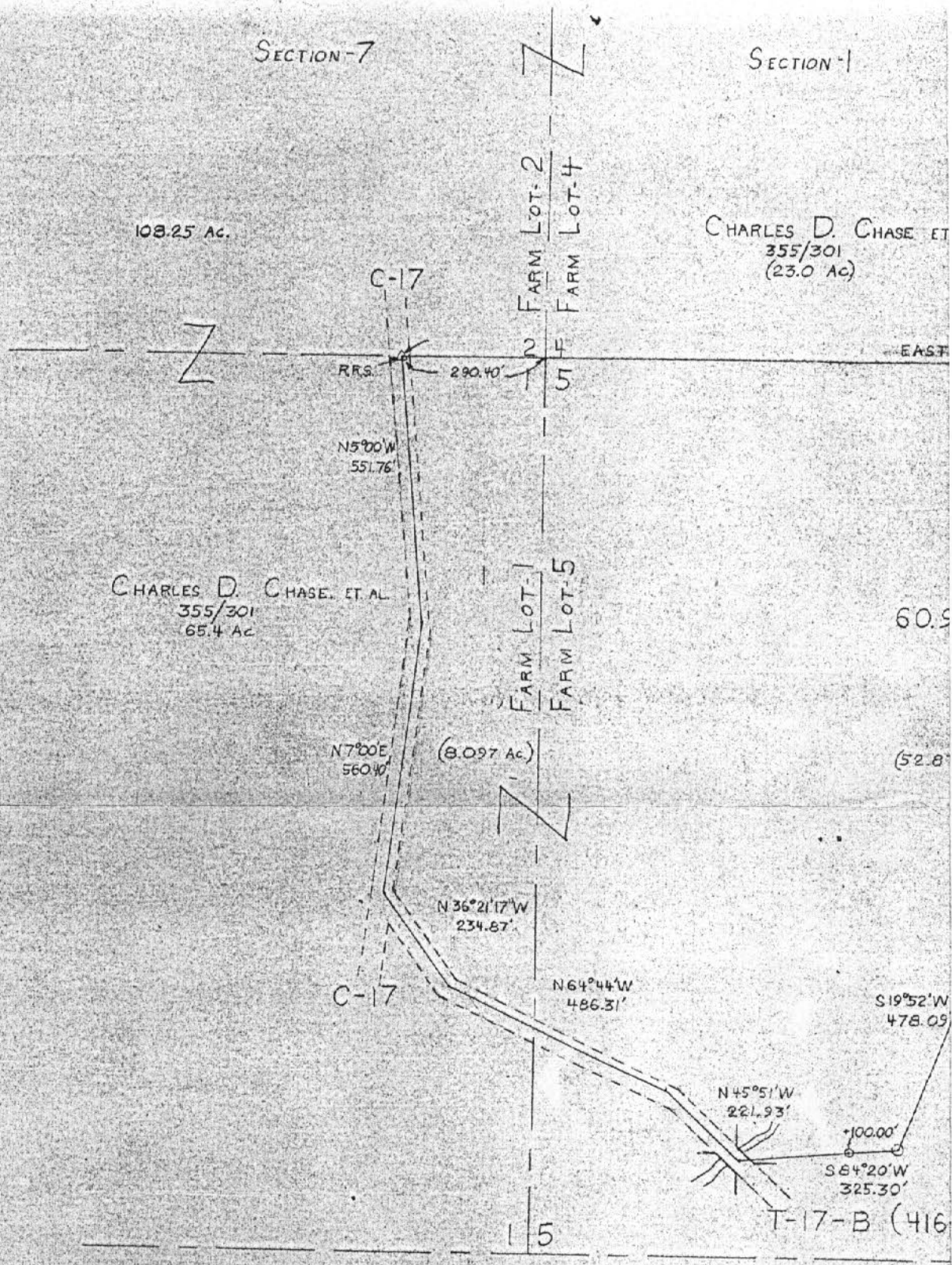
108.25 Ac.

CHARLES D. CHASE ET
355/301
(23.0 AC)

CHARLES D. CHASE, ET AL
355/301
(65.4 AC)

FARM LOT-2
FARM LOT-4

FARM LOT-1
FARM LOT-5



60.9

(52.8)

15

T-17-B (416)

3