

Description Checked for
Mathematical Accuracy
Athens County
ENGINEER'S OFFICE

BY: Braun [Signature]
DATE: 8/11/14



C. Thomas Smith

Ohio Professional Surveyor No. 6844

P.O. Box 393

Racine, Ohio 45771

740-949-2524

Description of survey for William Conrad
Tract One

Being a part of a tract of land transferred to William G. and M. Carolyn Conrad as recorded in Official Records Volume 200 at page 143 Athens County Recorder's Office, Athens County, Ohio, also being a part of Lease Lot 2, Section 14, Township-8, Range-14, Alexander Township, Athens County, State of Ohio and more particularly described as follows;

Beginning at a 5/8" iron pin set on the southern boundary of the grantor which bears South 89°51'14" West a distance of 264.85 feet and North 00°07'19" West a distance of 133.25 feet from an existing iron pin being the southeast corner of said Lease Lot 2, Section 14, T-8, R-14;

Thence along the north line of a tract transferred to Joey and Mary Daniel as recorded in Official records Volume 273 at page 345 North90° 00' 00"West passing thru a 5/8" iron pin set at a distance of 993.48 feet and going a total distance of 1023.48 feet to a point in the centerline of County Road 97;

Thence leaving said north line and along said centerline the following fourteen courses;

1. North01° 19' 56"West a distance of 58.81 feet to a point;
2. North03° 09' 15"East a distance of 42.86 feet to a point;
3. North07° 37' 15"East a distance of 56.35 feet to a point;
4. North13° 40' 53"East a distance of 73.05 feet to a point;
5. North21° 17' 07"East a distance of 73.31 feet to a point;
6. North26° 20' 14"East a distance of 61.50 feet to a point;
7. North35° 40' 23"East a distance of 45.91 feet to a point;
8. North39° 40' 59"East a distance of 41.26 feet to a point;
9. North41° 23' 46"East a distance of 113.14 feet to a point;
10. North39° 09' 47"East a distance of 78.56 feet to a point;
11. North35° 17' 50"East a distance of 67.12 feet to a point;
12. North28° 12' 59"East a distance of 46.14 feet to a point;
13. North20° 50' 37"East a distance of 35.52 feet to a point;
14. North05° 54' 03"East a distance of 23.94 feet to an existing railroad spike being the intersection of said centerline and the centerline of Township Road 48;

] Thence leaving said County Road 97 and along the centerline of said Township Road 48 the following three courses;

1. South81° 00' 42"East a distance of 63.31 feet to a point;
2. South80° 30' 14"East a distance of 116.44 feet to a point;
3. South81° 01' 15"East a distance of 164.91 feet to a point;

Thence leaving said centerline and thru the lands of the grantor the following two courses;

1. South23° 37' 32"East passing thru a 5/8" iron pin set a distance of 15.50 feet and going a total distance of 432.43 feet to a point in the centerline of a ravine from which a 5/8" iron pin set bears South 26°57'41" West a distance of 15.00 feet;
2. South33° 26' 13"East a distance of 321.27 feet to the principal point of beginning containing 11.2336 acres more or less subject to all legal easements and rights of way.

Bearings are assumed and are for the determination of angles only.

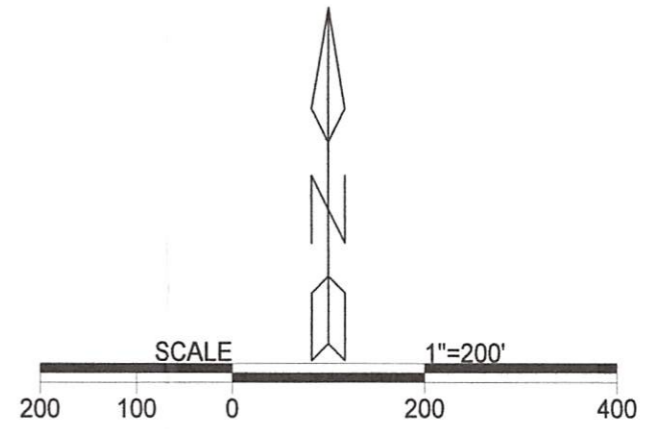
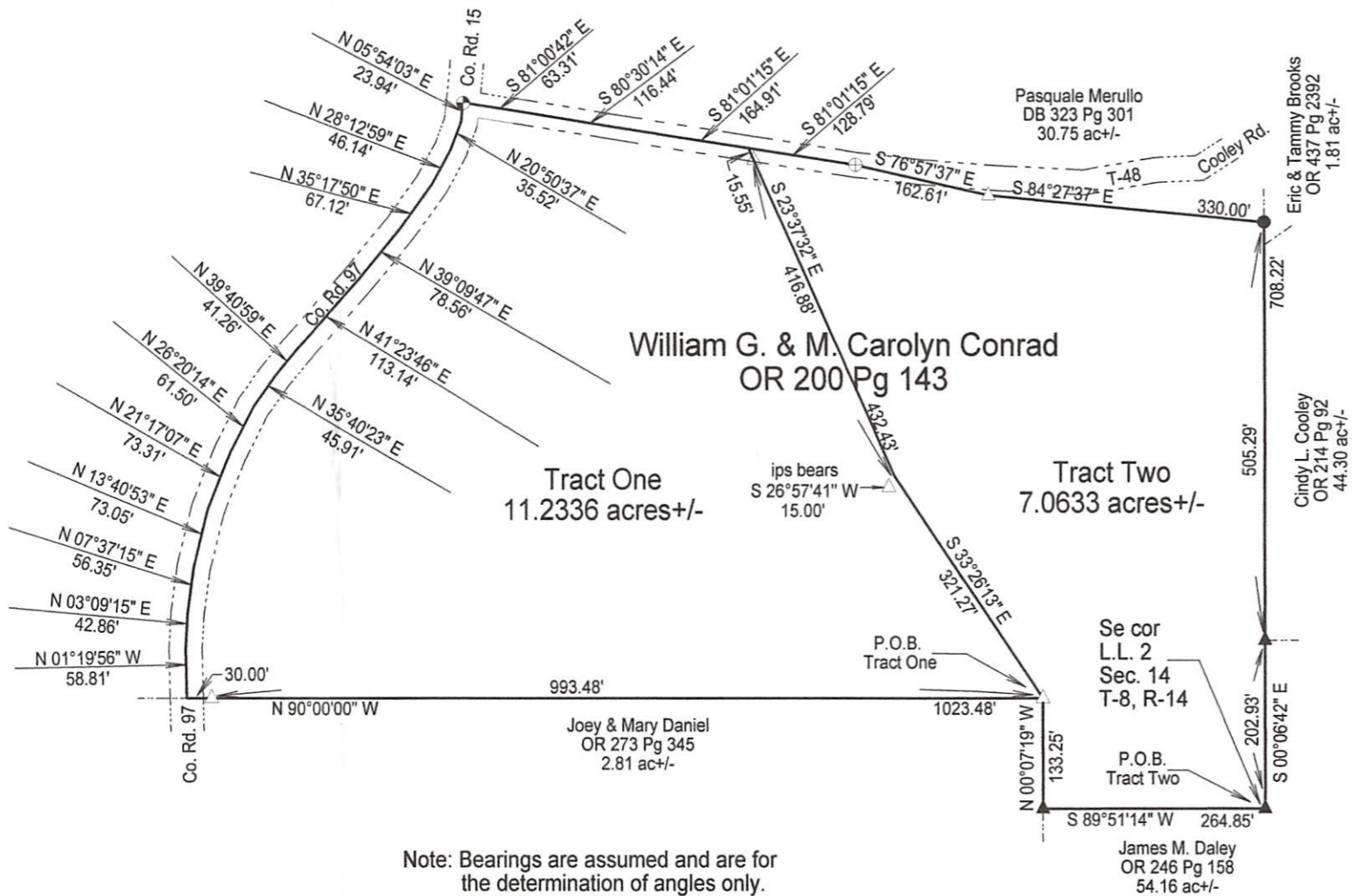
All iron pins set are 5/8"X30" rebar with plastic ID cap stamped "CTS-6844".

The above description was prepared from an actual survey made on the 29th day of April, 2013, by C. Thomas Smith, Ohio Professional Surveyor, No. 6844.



[Signature]
Ohio Professional Surveyor No. 6844

BEING A PART OF LEASE LOT 2, SECTION 14, TOWNSHIP-8, RANGE-14, ALEXANDER TOWNSHIP,
ATHENS COUNTY, STATE OF OHIO.



LEGEND

△	Iron pin set
▲	Iron pin found
•	Point
⊕	RRspike (F)
●	Existing Post
⊕	Mag Nail set

REFERENCES
Current Tax Plats
Previous surveys
Deeds: as noted
Aerial Photographs
U.S.G.S. Topo Maps

Description Checked for
Mathematical Accuracy
Athens County
ENGINEER'S OFFICE
BY: *Terence C. Williams*
DATE: 8/11/14

Note: Bearings are assumed and are for the determination of angles only.

All iron pins set are 5/8"X30" rebar with plastic ID cap stamped "CTS-6844".

Plat prepared from an actual survey made on the 29th day of April, 2013 by,

C. Thomas Smith
C. Thomas Smith Ohio Professional Surveyor No. 6844

Surveyed and platted by
C. Thomas Smith
Ohio Professional Surveyor No 6844
P.O. Box 393
Racine, Ohio 45771
740-949-2524

