

BRANNER SURVEYING

MEMBER-PROFESSIONAL LAND SURVEYORS OF OHIO

12500 N. PEACH RIDGE ROAD
ATHENS, OHIO 45701

JOHN M. BRANNER
Registered Land Surveyor

TELEPHONE
(614) 592-5778

DESCRIPTION OF A 2.055 ACRE TRACT

Situated in Section 14, T. 8, R. 14, Alexander Township, Athens County, Ohio and being a part of a 58.66 acre tract and the West Half of lot 4, described in Volume 214 page 92 and Volume 262 page 80 & 81 Athens County Deed of Records, and being more particularly described as follows;

Commencing at the North-east corner of the West half of lot 4 in Section 14;

thence, South 3 degrees 20 minutes 59 seconds East, a distance of 759.32 feet to an iron pin set, said point being the POINT OF BEGINNING;

thence, South 76 degrees 45 minutes 34 seconds West, a distance of 304.53 feet to an iron pin set;

thence, South 3 degrees 20 minutes 59 seconds East, a distance of 290.40 feet to a point in Township road 48, passing an iron pin set at 270 40 feet;

thence, following said road, North 88 degrees 04 minutes 44 seconds East, a distance of 55.45 feet to a point;

thence, North 79 degrees 03 minutes 01 second East, a distance of 72.19 feet to a point;

thence, North 72 degrees 16 minutes 28 seconds East, a distance of 50.57 feet to a point;

thence, North 72 degrees 22 minutes 57 seconds East, a distance of 87.11 feet to a point;

thence, North 72 degrees 19 minutes 02 seconds East, a distance of 40.87 feet to a point;

thence, leaving said road, North 3 degrees 20 minutes 59 seconds West, a distance of 290.40 feet to the POINT OF BEGINNING, passing an iron pin set at 20.00 feet; said described tract containing 2.055 acres.

Subject to all easements and right of way of record.

All iron pins set are 5/8 inch by 30 inch long rebar.

The above description is based on a field survey completed April 1997 by John M. Branner P.S. 6805

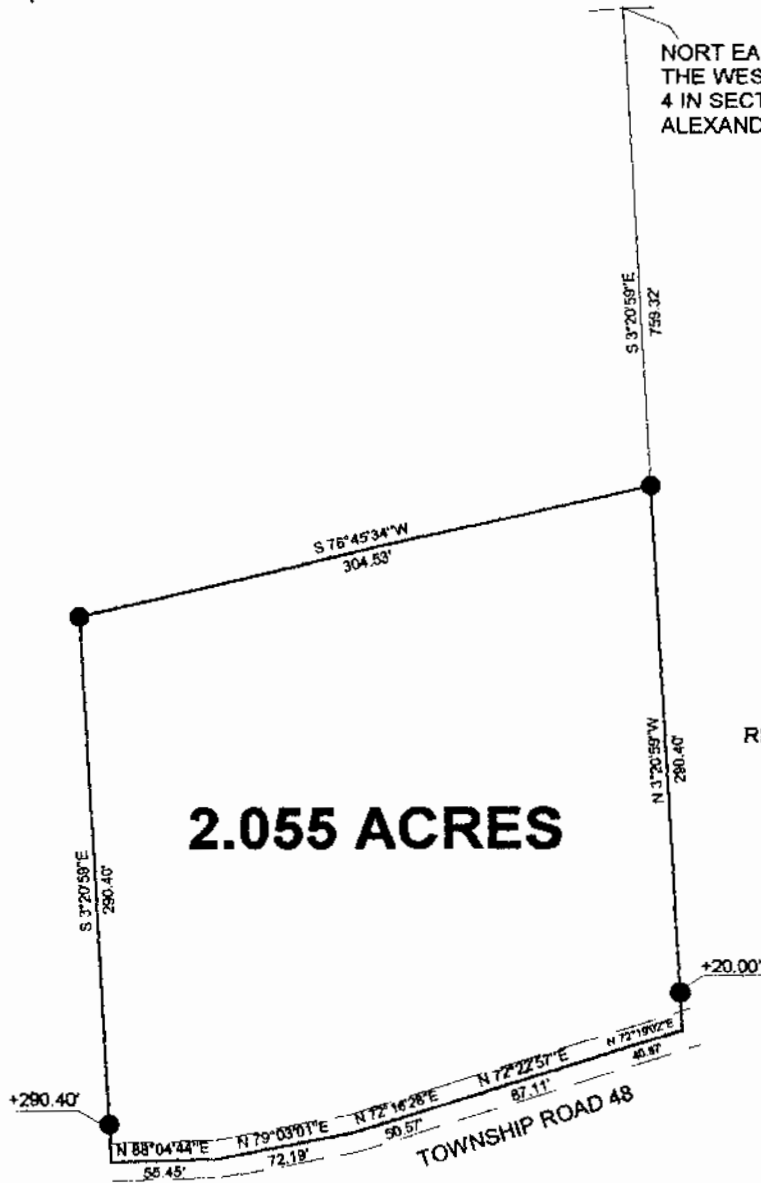
Description checked for
Mathematical Accuracy
ATHENS COUNTY
ENGINEER'S OFFICE
BY: S. Blawie
DATE: 5-29-97

NORT EAST CORNER OF
THE WEST HALF OF LOT
4 IN SECTION 8, T.8, R.14,
ALEXANDER TWP.

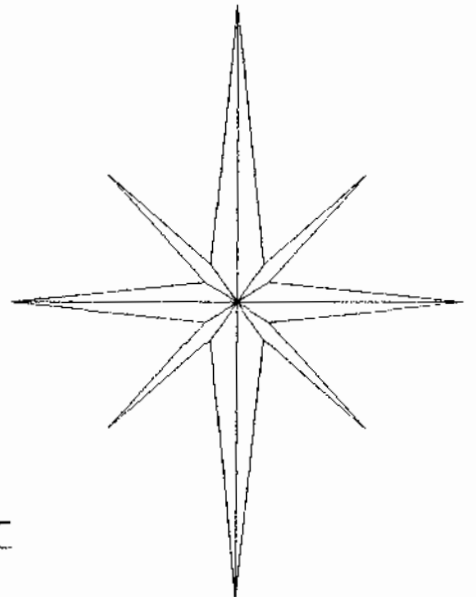
BOYD R. COOLEY
214-92 & 262-80 & 81
(58.86 ac.)

RICKARD V. MASON et al.
340-595

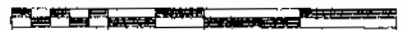
2.055 ACRES



N



Description checked for
Mathematical Accuracy
ATHENS COUNTY
ENGINEER'S OFFICE
BY: J. Blouse
DATE: 5-29-97



1 INCH = 100 FEET

○ = IRON PINS FOUND

● = IRON PINS SET

BEARINGS SHOWN HEREON
ARE BASED ON A PREVIOUS
SURVEY AND ARE USED TO
DENOTE ANGLES ONLY

**SURVEY OF A 2.055 ACRE TRACT
SECTION 14, T. 8, R. 14, ALEXANDER TOWNSHIP,
ATHENS COUNTY, OHIO
SURVEYED APRIL 1997**

**JOHN M. BRANNER P.S. 6805
12500 N. PEACH RIDGE ROAD,
ATHENS, OHIO (614) 592-5778**

ALX #14