



ROBINSON SURVEYING

MEMBER-PROFESSIONAL LAND SURVEYORS OF OHIO
12355 LIARS CORNER ROAD, MILLFIELD, OHIO 45761

ALAN D. ROBINSON
Registered Land Surveyor

TELEPHONE
(740) 593-8774

DESCRIPTION OF TRACT "A" 0.178 ACRE TRACT

Situated in Section 25, Town 8, Range 14, Alexander Township, Athens County, Ohio, and being a part of a 5.22-acre tract that was transferred to Daire Miner on 2/23/2000 and being more particularly described as follows:

Commencing at the Northwest corner of Fraction 1 in Section 31, Town 8, Range 14, Alexander Township, Athens County, Ohio;
thence South 0 degrees 00 minutes 00 seconds East, a distance of 1882.32 feet to a point;
thence South 89 degrees 37 minutes 46 seconds East, a distance of 1743.72 feet to a point;
thence North 3 degrees 09 minutes 04 seconds East, a distance of 615.42 feet to an iron pin found at the southwest corner of the Grantors aforementioned 5.22 acre tract;
thence, following the South line of said tract, South 89 degrees 48 minutes 16 seconds East, a distance of 229.84 feet to an iron pin found, said iron pin found being the POINT OF BEGINNING of the following described tract;
thence, on a random line, South 89 degrees 34 minutes 42 seconds East, a distance of 110.10 feet to an iron pin found at the Northwest corner of a 0.52 acre tract described in Volume 268 Page 1322 Official Records of Athens County and a corner of said Grantors tract;
thence, following the West line of said 0.52 acre tract and one of the Grantors East lines, South 39 degrees 14 minutes 59 seconds East, a distance of 182.80 feet to a point in Township road 42;
thence, leaving the West line of said 0.52 acre tract and said Road and following one of the Grantors West lines, North 58 degrees 20 minutes 22 seconds West, a distance of 20.15 feet to an iron pin found;
thence North 57 degrees 42 minutes 57 seconds West, a distance of 246.75 feet to the POINT OF BEGINNING; said described tract containing 0.178 acre (7,772.8325 square feet), and is to be continuous and contiguous with a 0.52 acre tract described in Volume 268 Page 1322 Official Records of Athens County.

Bearings are based on previous Surveys and are used to denote angles only.

Subject to all easements and right-of-way of record.

All iron pins set are 5/8 inch by 30-inch long rebar with a yellow cap stamped Alan Robinson RLS 8049.

Alan D. Robinson P.S. 8049 bases the above description on a field Survey completed August 2, 2000,

Alan D. Robinson

Description checked for
Mathematical Accuracy
ATHENS COUNTY
ENGINEER'S OFFICE
BY: *S. Blausch*
DATE: *8-2-00*



000015

Wednesday, August 02, 2000 2:44 pm. Pg:

1

Registered to:

ATHENS COUNTY ENGINEER DEPT.

File Name:

C:\LOTSPL~1\ALEX\S25\T42-0-17.ZAK

Point	Direction	Distance	Northing	Easting	Elevation
-------	-----------	----------	----------	---------	-----------

Database opened: Wednesday, August 02, 2000 2:43 pm.

Assigned point

1			5000.00000	5000.00000	0.000
Start					
1			5000.00000	5000.00000	0.000
Raw:	s89.3442e	110.10			
TR	S 89°34'42.0" E	110.100			
2			4999.18973	5110.09702	0.000
Raw:	s39.1459e	182.80			
TR	S 39°14'59.0" E	182.800			
3			4857.63019	5225.75487	0.000
Raw:	n58.2022w	20.15			
TR	N 58°20'22.0" W	20.150			
4			4868.20664	5208.60374	0.000
Raw:	n57.4257w	246.75			
TR	N 57°42'57.0" W	246.750			
5			5000.00044	4999.99895	0.000
IN	S 67°06'19.7" E	0.001			
1			5000.00000	5000.00000	0.000

Area = 7772.866 Sq. Feet or 0.178 Acres

Database Saved: Wednesday, August 02, 2000 2:44 pm.

000016



ROBINSON SURVEYING

MEMBER-PROFESSIONAL LAND SURVEYORS OF OHIO
12355 LIARS CORNER ROAD, MILLFIELD, OHIO 45761

ALAN D. ROBINSON
Registered Land Surveyor

TELEPHONE
(740) 593-8774

DESCRIPTION OF TRACT "B" 0.739 ACRE TRACT

Situated in Section 25, Town 8, Range 14, Alexander Township, Athens County, Ohio, and being a part of a 5.22-acre tract that was transferred to Daire Miner on 2/23/2000 and being more particularly described as follows:

Commencing at the Northwest corner of Fraction 1 in Section 31, Town 8, Range 14, Alexander Township, Athens County, Ohio;

thence South 0 degrees 00 minutes 00 seconds East, a distance of 1882.32 feet to a point;

thence South 89 degrees 37 minutes 46 seconds East, a distance of 1743.72 feet to a point;

thence North 3 degrees 09 minutes 04 seconds East, a distance of 615.42 feet to an iron pin found at the Grantors Southwest corner;

thence, following the Grantors South line, South 89 degrees 48 minutes 16 seconds East, a distance of 229.84 feet to an iron pin found;

thence, leaving the Grantors South line on a random line, South 89 degrees 34 minutes 42 seconds East, a distance of 110.10 feet to an iron pin found in a Creek and at one of the Grantors corners and at the Northwest corner of a 0.52 acre tract described in Volume 268 Page 1322 Official Records of Athens County, said iron pin found being the POINT OF BEGINNING of the following described tract;

thence, following the center of said creek, North 15 degrees 43 minutes 54 seconds East, a distance of 14.81 feet to a point;

thence North 32 degrees 37 minutes 28 seconds East, a distance of 22.23 feet to a point;

thence North 22 degrees 03 minutes 41 seconds West, a distance of 65.53 feet to a point;

thence North 4 degrees 37 minutes 20 seconds West, a distance of 29.46 feet to a point;

Thence-North 1 degree 38 minutes 51 seconds East, a distance of 38.52 feet to a point;

thence North 67 degrees 20 minutes 19 seconds West, a distance of 21.36 feet to a point in the intersection of 2 creeks;

thence, following said creek, North 39 degrees 57 minutes 57 seconds East, a distance of 47.86 feet to a point;

thence North 51 degrees 55 minutes 26 seconds East, a distance of 13.32 feet to a point;

thence South 18 degrees 14 minutes 40 seconds East, a distance of 54.90 feet to a point;

thence South 79 degrees 37 minutes 04 seconds East, a distance of 37.63 feet to a point;

thence North 87 degrees 54 minutes 43 seconds East, a distance of 32.72 feet to a point;

thence North 89 degrees 36 minutes 36 seconds East, a distance of 53.00 feet to a point;

thence South 52 degrees 17 minutes 20 seconds West, a distance of 27.18 feet to a point;

thence South 30 degrees 26 minutes 33 seconds East, a distance of 52.94 feet to a point;

thence South 55 degrees 26 minutes 45 seconds East, a distance of 62.83 feet to a point;

thence South 32 degrees 29 minutes 27 seconds East, a distance of 21.86 feet to a point;

thence South 46 degrees 17 minutes 19 seconds East, a distance of 38.92 feet to a point;

thence South 65 degrees 10 minutes 01 second East, a distance of 45.76 feet to a point in the Grantors South line and in the North line of the aforementioned 0.52 acre tract, referenced by an iron pin found Bearing North 89 degrees 59 minutes 16 seconds East, a distance of 35.43 feet;

thence, leaving said creek and following the Grantors South line, North 88 degrees 59 minutes 16 seconds West, a distance of 290.06 feet to the POINT OF BEGINNING; said described tract containing 0.739 acre (32,204.5398 square feet), and is to be continuous and contiguous with a 0.52 acre tract described in Volume 268 Page 1322 Official records of Athens County.

Bearings are based on previous Surveys and are used to denote angles only.

Subject to all easements and right-of-way of record.

All iron pins set are 5/8 inch by 30-inch long rebar with a yellow cap stamped Alan Robinson RLS 8049.

Alan D. Robinson P.S. 8049 bases the above description on a field Survey completed August 2, 2000,

Alan D. Robinson

Description checked for
Mathematical Accuracy
ATHENS COUNTY
ENGINEER'S OFFICE
BY: *J. Blause*
DATE: *8-2-00*



ALX # 25

000017

Wednesday, August 02, 2000 2:43 pm. Pg:

1
 Registered to:
 ATHENS COUNTY ENGINEER DEPT.
 File Name:
 C:\LOTSPL-1\ALEX\S25\T42-0-73.ZAK

Point	Direction	Distance	Northing	Easting	Elevation
-------	-----------	----------	----------	---------	-----------

Database opened: Wednesday, August 02, 2000 2:37 pm.

Assigned point

	1		5000.00000	5000.00000	0.000
Start					
	1		5000.00000	5000.00000	0.000
Raw:	n15.4354e	14.81			
TR	N 15°43'54.0" E	14.810			
	2		5014.25525	5004.01547	0.000
Raw:	n32.3728e	22.23			
TR	N 32°37'28.0" E	22.230			
	3		5032.97785	5016.00034	0.000
Raw:	n22.0341w	65.53			
TR	N 22°03'41.0" W	65.530			
	4		5093.70987	4991.38728	0.000
Raw:	n04.3720w	29.46			
TR	N 4°37'20.0" W	29.460			
	5		5123.07406	4989.01323	0.000
Raw:	n01.3851e	38.52			
TR	N 1°38'51.0" E	38.520			
	6		5161.57814	4990.12069	0.000
Raw:	n67.2019w	21.36			
TR	N 67°20'19.0" W	21.360			
	7		5169.80781	4970.40973	0.000
Raw:	n39.5757e	47.86			
TR	N 39°57'57.0" E	47.860			
	8		5206.48904	5001.15168	0.000
Raw:	n51.5526e	13.32			
TR	N 51°55'26.0" E	13.320			
	9		5214.70358	5011.63708	0.000
Raw:	s18.1440e	54.90			
TR	S 18°14'40.0" E	54.900			
	10		5162.56343	5028.82471	0.000
Raw:	s79.3704e	37.63			
TR	S 79°37'04.0" E	37.630			
	11		5155.78198	5065.83861	0.000
Raw:	n87.5443e	32.72			
TR	N 87°54'43.0" E	32.720			
	12		5156.97415	5098.53689	0.000
Raw:	n89.3636e	53.00			
TR	N 89°36'36.0" E	53.000			
	13		5157.33491	5151.53566	0.000
Raw:	s52.1720w	27.18			
TR	S 52°17'20.0" W	27.180			
	14		5140.70943	5130.03343	0.000
Raw:	s30.2633e	52.94			
TR	S 30°26'33.0" E	52.940			
	15		5095.06784	5156.85672	0.000
Raw:	s55.2645e	62.83			

000018

Wednesday, August 02, 2000 2:43 pm. Pg:

2

Registered to:

ATHENS COUNTY ENGINEER DEPT.

File Name:

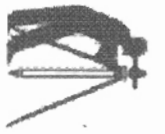
C:\LOTSPL-1\ALEX\S25\T42-0-73.ZAK

Point	Direction	Distance	Northing	Easting	Elevation
TR	S 55°26'45.0" E	62.830			
16			5059.43160	5208.60290	0.000
Raw:	s32.2927e	21.86			
TR	S 32°29'27.0" E	21.860			
17			5040.99318	5220.34532	0.000
Raw:	s46.1719e	38.92			
TR	S 46°17'19.0" E	38.920			
18			5014.09845	5248.47786	0.000
Raw:	s65.1001e	45.76			
TR	S 65°10'01.0" E	45.760			
19			4994.88036	5290.00667	0.000
Raw:	n88.5916w	290.06			
TR	N 88°59'16.0" W	290.060			
20			5000.00447	4999.99194	0.000
IN	S 60°59'51.4" E	0.009			
1			5000.00000	5000.00000	0.000

Area = 32203.149 Sq. Feet or 0.739 Acres

Database Saved: Wednesday, August 02, 2000 2:43 pm.

000019



ROBINSON SURVEYING

12355 Liars Corner Rd.
Millfield, Ohio 45761
(740) 593-8774

Northwest Corner
of Fraction 1 in
Section 31

Martha M.
Carter
340-547

(Basis of Bearing)
N 62°04'47"E
583.16'

+422.60'

Daire Carmichael
Miner
T.F.R. 5/23/00
5.22 Acres

Tracts "A" & "B" are to be Continuous
and Contiguous with a 0.52 Acre tract
described in Volume 268 Page 1322
Official Records of Athens County

Harry L. &
Debra M.
Shumate
59-390 O.R.
5.00 Ac.

Tract "A"
0.178
Acres

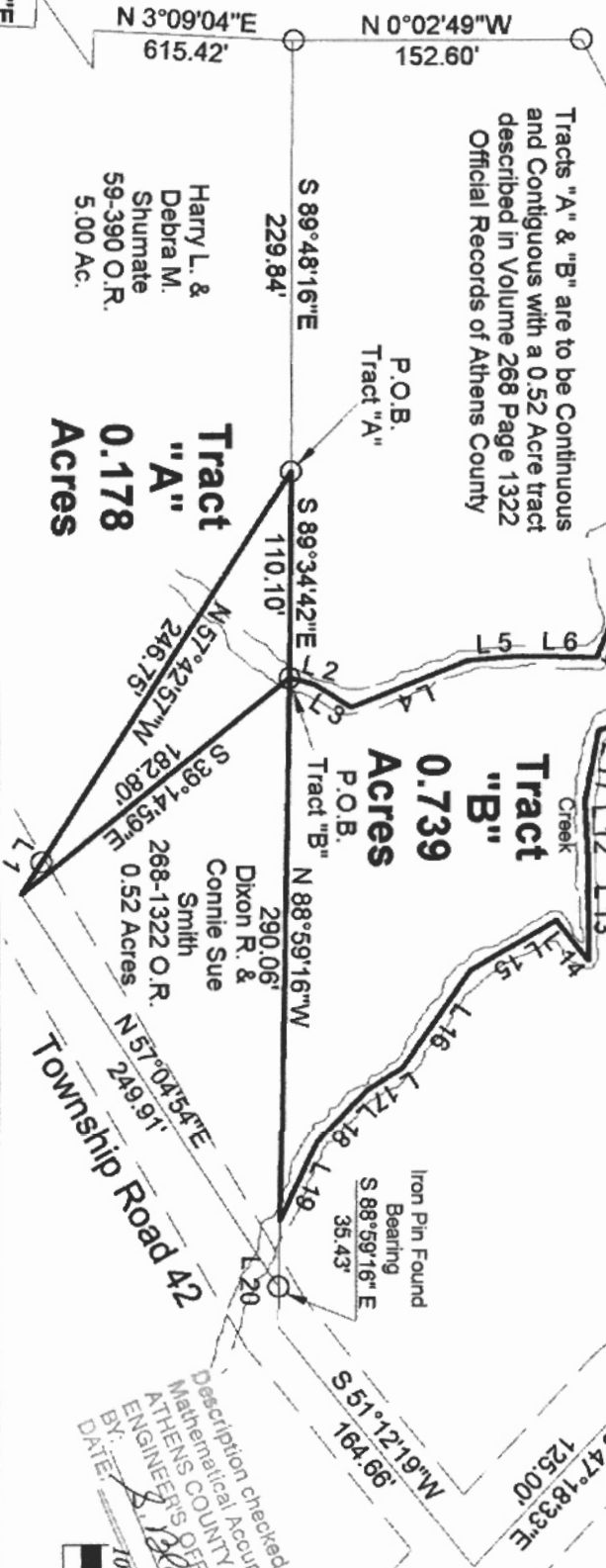
Tract "B"
0.739
Acres

Dixon R. &
Connie Sue
Smith
268-1322 O.R.
0.52 Acres

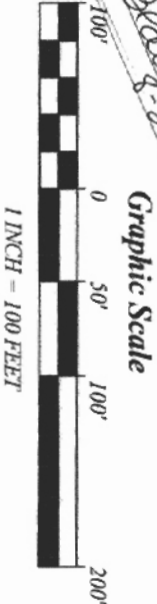
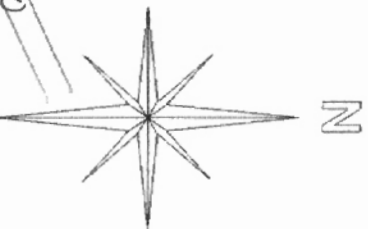
Township Road 42

State Route 681
S 41°37'07"E
204.43'

Line	Bearing	Distance
1	N 58°20'22"W	20.15'
2	N 15°43'54"E	14.81'
3	N 32°37'28"E	22.23'
4	N 22°03'41"W	66.53'
5	N 4°37'20"W	29.46'
6	N 1°38'51"E	38.52'
7	N 67°20'19"W	21.36'
8	N 39°57'57"E	47.86'
9	N 51°55'28"E	13.32'
10	S 18°14'40"E	54.90'
11	S 79°37'04"E	37.63'
12	N 87°54'43"E	32.72'
13	N 89°36'36"E	53.00'
14	S 52°17'20"W	27.18'
15	S 30°26'33"E	52.94'
16	S 55°26'45"E	62.83'
17	S 32°29'27"E	21.86'
18	S 46°17'19"E	38.92'
19	S 65°10'01"E	45.76'
20	N 88°59'16"W	56.70'



Description checked for
Mathematical Accuracy
ATHENS COUNTY
ENGINEER'S OFFICE
BY: *Alan D. Robinson*
DATE: *8-2-00*



BEARING REFERENCE
BASED ON PREVIOUS SURVEYS AND
ARE USED TO DENOTE ANGLES ONLY

References
Deeds as Noted
Current Tax Plats
Existing Monumentation

- = IRON PINS SET
- = IRON PINS FOUND
- △ = RAIL ROAD SPIKE FOUND
- ▲ = RAIL ROAD SPIKE SET
- ☒ = STONE FOUND

Plat of Survey of Tract "A" & Tract "B"

Surveyed for: Daire Miner Date 8/02/00

Subdivision: -----

Section 25, Town 8, Range 14, Alexander Township

Athens County, State of Ohio

Alan D. Robinson Registered Professional Land Surveyor No. 8049

Alan D. Robinson



000020