

EXHIBIT "A"

Being a part of the tract of land that is now or formerly in the name of Terry Brent West as recorded in Official Record 20 at page 659, Athens County Recorder's Office, said tract being part of Farm Lots 1 and 2, Section 25, T8N, R14W, Alexander Township, Athens County, State of Ohio and being more particularly described as follows:

Beginning at a P.K. Nail set in the center of State Route 681, on the north line of Farm Lot 1 and the south line of Farm Lot 2 from which the northeast corner of Farm Lot 1 in Section 25 bears North 89 degrees 47 minutes 10 seconds East a distance of 1145.34 feet;

Thence leaving the center of said road and along the north line of Farm Lot 1 and the south line of Farm Lot 2, North 89 degrees 47 minutes 10 seconds East a distance of 296.24 feet to a 5/8" X 30" iron pin with a plastic identification cap set;

Thence leaving the north line of Farm Lot 1 and the south line of Farm Lot 2 and along a grantor's line the following three courses:

1. North 66 degrees 00 minutes 00 seconds East a distance of 51.48 feet to a 5/8" X 30" iron pin with a plastic identification cap set;
2. North 36 degrees 30 minutes 00 seconds East a distance of 48.18 feet to a 5/8" X 30" iron pin with a plastic identification cap set, and;
3. North 56 degrees 30 minutes 00 seconds East a distance of 132.00 feet to a 5/8" X 30" iron pin with a plastic identification cap set on a grantor's corner;

Thence with a new line through the grantor's land the following four courses:

1. South 11 degrees 42 minutes 37 seconds East a distance of 475.41 feet to a 5/8" X 30" iron pin with a plastic identification cap set;
2. South 77 degrees 20 minutes 13 seconds West a distance of 106.53 feet to a 5/8" X 30" iron pin with a plastic identification cap set;
3. North 48 degrees 25 minutes 39 seconds West a distance of 120.12 feet to a 5/8" X 30" iron pin with a plastic identification cap set, and;
4. North 87 degrees 36 minutes 54 seconds West, passing through a 5/8" X 30" iron pin with a plastic identification cap set at 150.83 feet, going a total distance of 190.91 feet to a point in the center of State Route 681 and the grantor's west line;

Thence along the center of said road and the grantor's west line the following two courses:

1. North 34 degrees 16 minutes 23 seconds West a distance of 207.51 feet to a point, and,;
2. North 38 degrees 44 minutes 00 seconds West a distance of 123.20 feet to the principal point of beginning, containing 0.320 acre in Farm Lot 2 and 2.982 acres in Farm Lot 1, for a total of 3.302 acres, more or less, and subject to the right-of-way of State Route 681, County Road 15 and all easements of record.

All 5/8" X 30" iron pins with plastic identification caps set are stamped "Seymour & Associates".

The bearings used in the above described tract were based on a previous survey as recorded in Official Record 20 at page 659 and are for the determination of angles only.

The above described tract was surveyed by George F. Seymour, Ohio Professional Surveyor No. 6044, February 13, 1998.

George F. Seymour
 George F. Seymour, P.S. #6044



Description checked for
 Mathematical Accuracy
 ATHENS COUNTY
 ENGINEER'S OFFICE
 BY: *S. Blausen*
 DATE: *2-24-98*

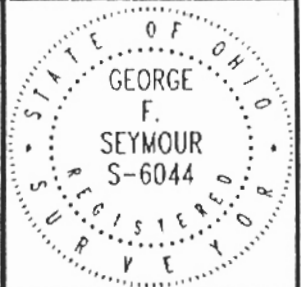


42

ALX#25

PROFESSIONAL LAND SURVEYORS

PLAT OF SURVEY



SEYMOUR & ASSOCIATES

P.O. Box 624
830 W. Hunter St. 614-385-4349
Logan, Ohio 43138

BEING A PART OF FARM LOTS LAND 2,
SECTION 25, T-8-N, R-14-W,
ALEXANDER TWP, ATHENS CO., OHIO.

FOR: DOUG CAMPBELL

PROJ. No.: AT9802

BY: C.T.S.

DATE: 2-13-98

NOTE: BEARINGS WERE DERIVED FROM A PREVIOUS SURVEY
RECORDED IN OFFICIAL RECORDS BOOK 20 AT PAGE 659.



SCALE

1" = 100'



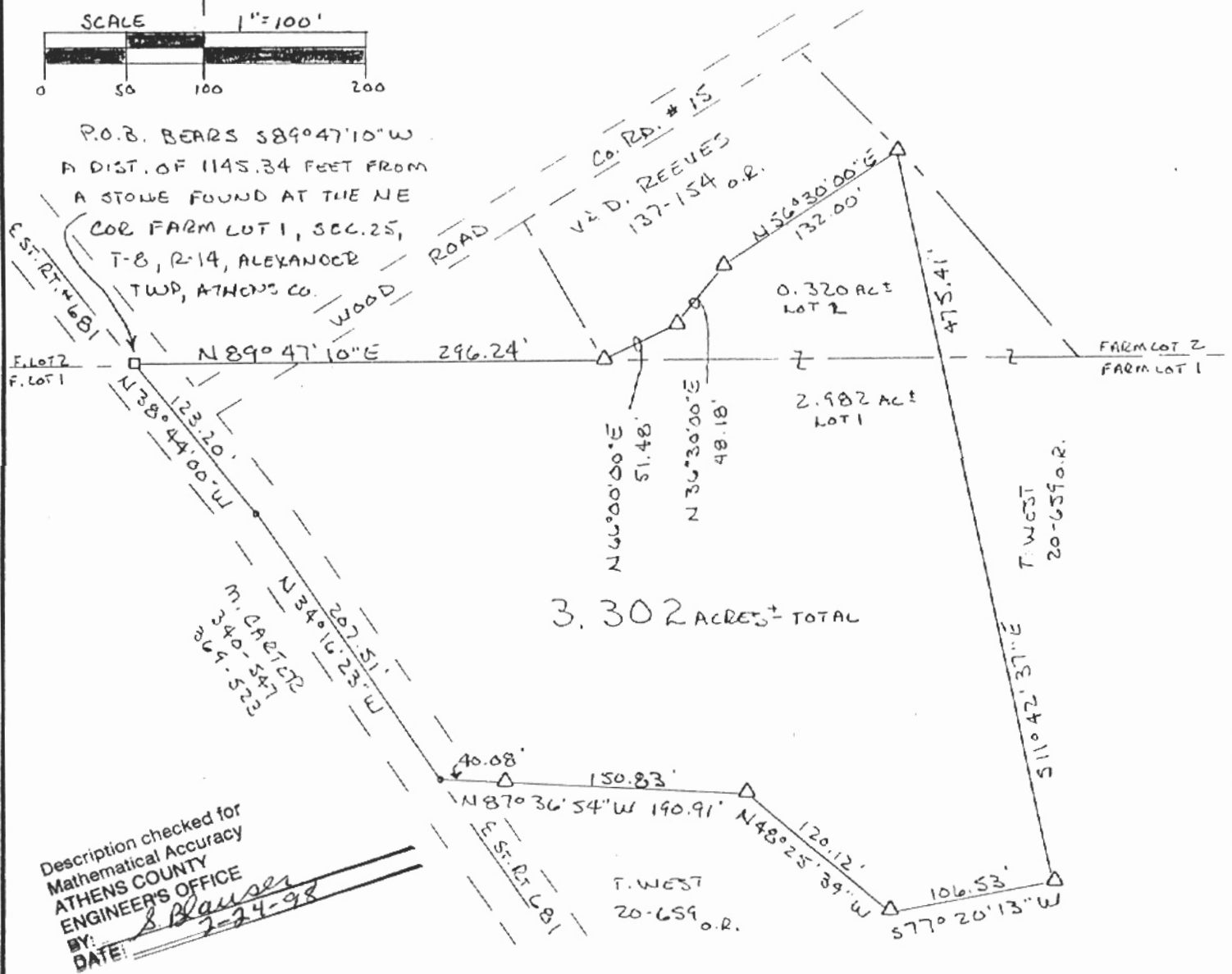
LEGEND

- △ - 5/8" x 30" IRON PIN w/ I.D. CAP SET
- - P.I.K. NAIL SET
- - POINT

REFERENCES

- CURRENT TAX PLATS
- U.S.G.S. TOPO MAPS
- AERIAL PHOTOGRAPHS
- PREVIOUS SURVEYS
- DEEDS: AS NOTED ON PLAT

P.O.B. BEARS S89°47'10"W
A DIST. OF 1145.34 FEET FROM
A STONE FOUND AT THE NE
COR FARM LOT 1, SEC. 25,
T-8, R-14, ALEXANDER
TWP, ATHENS CO.



3.302 ACRES± TOTAL

Description checked for
Mathematical Accuracy
ATHENS COUNTY
ENGINEER'S OFFICE
BY: S. Blausen
DATE: 2-24-98



PLAT PREPARED FROM AN ACTUAL
SURVEY MADE ON THE 13TH DAY OF
FEBRUARY, 1998 BY,

George F. Seymour
OHIO PROFESSIONAL SURVEYOR

43

No 6044

| Point | Direction | Distance | Northing | Easting |
|--|-----------------|----------|------------|------------|
| Database opened: Tuesday, February 24, 1998 7:55 am. | | | | |
| Assigned point | | | | |
| 1 | | | 5000.00000 | 5000.00000 |
| Start | | | | |
| 1 | | | 5000.00000 | 5000.00000 |
| Raw: | n89.4710e | 296.24 | | |
| TR | N 89°47'10.0" E | 296.240 | | |
| 2 | | | 5001.10588 | 5296.23794 |
| Raw: | n66.0000e | 51.48 | | |
| TR | N 66°00'00.0" E | 51.480 | | |
| 3 | | | 5022.04468 | 5343.26726 |
| Raw: | n36.3000e | 48.18 | | |
| TR | N 36°30'00.0" E | 48.180 | | |
| 4 | | | 5060.77451 | 5371.92582 |
| Raw: | n56.3000e | 132.00 | | |
| TR | N 56°30'00.0" E | 132.000 | | |
| 5 | | | 5133.63019 | 5481.99875 |
| Raw: | s11.4237e | 475.41 | | |
| TR | S 11°42'37.0" E | 475.410 | | |
| 6 | | | 4668.11517 | 5578.48936 |
| Raw: | s77.2013w | 106.53 | | |
| TR | S 77°20'13.0" W | 106.530 | | |
| 7 | | | 4644.76197 | 5474.55059 |
| Raw: | n48.2539w | 120.12 | | |
| TR | N 48°25'39.0" W | 120.120 | | |
| 8 | | | 4724.46967 | 5384.68681 |
| Raw: | n87.3654w | 190.91 | | |
| TR | N 87°36'54.0" W | 190.910 | | |
| 9 | | | 4732.41421 | 5193.94219 |
| Raw: | n34.1623w | 207.51 | | |
| TR | N 34°16'23.0" W | 207.510 | | |
| 10 | | | 4903.89284 | 5077.08552 |
| Raw: | n38.4400w | 123.20 | | |
| TR | N 38°44'00.0" W | 123.200 | | |
| 11 | | | 4999.99704 | 4999.99970 |
| IN | N 5°41'55.9" E | 0.003 | | |
| 1 | | | 5000.00000 | 5000.00000 |

Area = 143832.9531 Sq. Feet or 3.3020 Acres

Database Saved: Tuesday, February 24, 1998 8:00 am.

44