

Phone 740-753-1264  
Fax 740-753-1264

**Description of a 0.944 Acre Tract**

Situated in Fraction 3, Section 25, T-8, R-14, Alexander Township, Athens County, State of Ohio and being a part of a tract as described in Volume 312, Page 1248, of the Official Records of Athens County and being more particularly described as follows:

Commencing at a Stone found at the Northeast corner of fraction 3, Thence South 0°55'49"West, 1767.32 feet to an iron pin previously set at the Northeast corner of a 5.995 acre tract, Thence North 60°04'59"West, 255.22 feet to an iron pin previously set, Thence South 25°38'05"West, 250.31 feet to an iron pin previously set in the center of TR-663, Thence along the center of said road the following two courses: South 87°54'42"West, 53.55 feet to a point, South 44°28'53"West, 3.18 feet to the POINT of BEGINNING of this tract THENCE leaving said road South 64°35'58"East, 108.50 feet to an iron pin set, (passing an iron pin set at 14.74 feet)

THENCE South 17°15'53"West, 299.00 feet to a point in grantors south line, (passing an iron pin set at 262.45 feet),

THENCE along said line North 47°25'54"West, 210.07 feet to an iron pin previously set in the center of TR-663,

THENCE along the center of said road the following three courses, North 41°45'51"East, 67.77 feet to a point, North 32°14'20"East, 123.20 feet to a point, North 44°28'53"East, 49.36 feet to the point of beginning and containing 0.944 acres.

Bearings are to an assumed meridian and are for angular determination only

Subject to all Easements and Rights of Way of record

*Kenneth E. Highland*  
Kenneth E. Highland S-7581  
KENNETH E. HIGHLAND S-7581  
REGISTERED PROFESSIONAL LAND SURVEYOR

Description checked for  
Mathematical Accuracy  
ATHENS COUNTY  
ENGINEER'S OFFICE  
BY: *S. Blausy*  
DATE: 12-27-01

Thursday, December 27, 2001 10:14 am.Pg:

1

Registered to:

ATHENS COUNTY ENGINEER DEPT.

File Name:

C:\LOTSPL~1\ALEX\S25\663-0-94.ZAK

Point	Direction	Distance	Northing	Easting	Elevation
Database opened: Thursday, December 27, 2001 10:12 am.					
Assigned point					
1			5000.00000	5000.00000	0.000
Start					
1			5000.00000	5000.00000	0.000
Raw:	s64.3558e	108.50			
TR	S 64°35'58.0" E	108.500			
2			4953.45959	5098.01143	0.000
Raw:	s17.1553w	299.00			
TR	S 17°15'53.0" W	299.000			
3			4667.93142	5009.27213	0.000
Raw:	n47.2554w	210.07			
TR	N 47°25'54.0" W	210.070			
4			4810.03727	4854.56165	0.000
Raw:	n41.4551e	67.77			
TR	N 41°45'51.0" E	67.770			
5			4860.58642	4899.70095	0.000
Raw:	n32.1420e	123.20			
TR	N 32°14'20.0" E	123.200			
6			4964.79283	4965.42205	0.000
Raw:	n44.2853e	49.36			
TR	N 44°28'53.0" E	49.360			
7			5000.01011	5000.00749	0.000
IN	S 36°33'05.1" W	0.013			
1			5000.00000	5000.00000	0.000

Area = 41119.165 Sq. Feet or 0.944 Acres

Database Saved: Thursday, December 27, 2001 10:14 am.

Saylor  
305-891 OR

N.E. corner  
of Fraction 3

TR-663

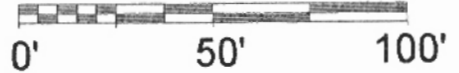
0.944 Acres

Cline  
312-1248 OR

Cline  
313-431 OR

Description checked for  
Mathematical Accuracy  
ATHENS COUNTY  
ENGINEER'S OFFICE  
BY: S. Blause  
DATE: 12-27-01

Scale 1"=50'



- = Iron Pin Set
- = Iron Pin Previously Set
- = Stone Found

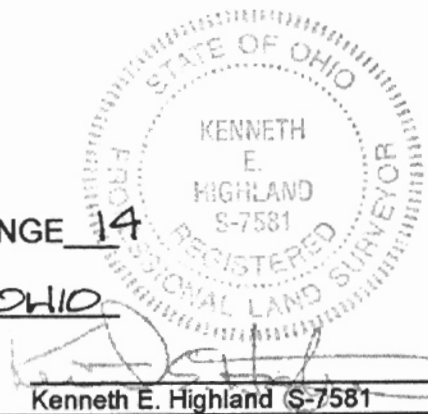
Line	Bearing	Distance
29	S 44°28'53"W	3.18'

Bolin  
340-221

PLAT OF SURVEY OF A 0.944 AC. TRACT  
 SURVEYED FOR GRAIG CLINE  
 SUBDIVISION FRACTION 3  
 TOWNSHIP ALEXANDER SECTION 25 TOWN 8 RANGE 14  
 CORPORATION - COUNTY ATHENS STATE OHIO

SCALE 1"= 200' DATE DEC, 2001

Kenneth E. Highland  
80 Fayette St.  
Nelsonville, Ohio 45764  
740-753-1264



Kenneth E. Highland S-7581