

EXHIBIT "A"

Situated in Farm Lot 6, Section 31, Township 8, Range 14, Alexander Township, Athens County, Ohio, and being more particularly described as follows:

Beginning for description at a point in the center of Township Road 41, said point being S 87° 37' 23" W a distance of 1314.11 feet and N 2° 22' 24" W a distance of 549.45 feet from the southeast corner of Farm Lot 4; thence with the center line of said road the next three courses and distances; S 69° 13' 14" W a distance of 240.57 feet; thence S 70° 05' 38" W a distance of 33.54 feet; thence S 74° 03' 18" W a distance of 86.32 feet to a rail road spike set and THE TRUE POINT OF BEGINNING of the tract herein described; thence continuing with said center line the next five courses and distances; S 74° 03' 18" W a distance of 75.62 feet; thence N 89° 00' 24" W a distance of 144.86 feet; thence N 69° 49' 19" W a distance of 387.41 feet; thence N 70° 05' 08" W a distance of 159.99 feet; thence N 84° 08' 27" W a distance of 244.34 feet to a rail road spike set at the grantor's south west corner; thence with the grantor's west line N 1° 34' 56" W a distance of 57.10 feet to a rail road spike set in the center line of Township Road 42; thence with the center line of Township Road 42 the next two courses and distances; N 48° 59' 48" E a distance of 356.00 feet; thence N 40° 49' 32" E a distance of 56.63 feet to a rail road spike set; thence leaving said center line N 89° 00' 24" E a distance of 648.31 feet to a one inch iron pipe set; thence with the grantor's east line S 2° 22' 24" E a distance of 540.00 feet to the true point of beginning.

Containing 8.95 acres more or less and subject to all legal rights of way of record.

Description checked for
Mathematical Accuracy
ATHENS COUNTY
ENGINEERS OFFICE
BY: Susan Updome
DATE: 10-14-92

Alexander 31

Mazie Mincard
 213-550 24 349 & 222-417
 15.0 00.
 S 88° 03' 02" W 1287.14 Total

Nail found S 81° 22' 12" E 0.57'
 from corner set
 E 88° 03' 02" W 433.14

Corner Post
 1" Iron Pipe Found
 7' 21" E & 0.31' E of
 Corner Set



Howard & J...
 179-45
 66.20

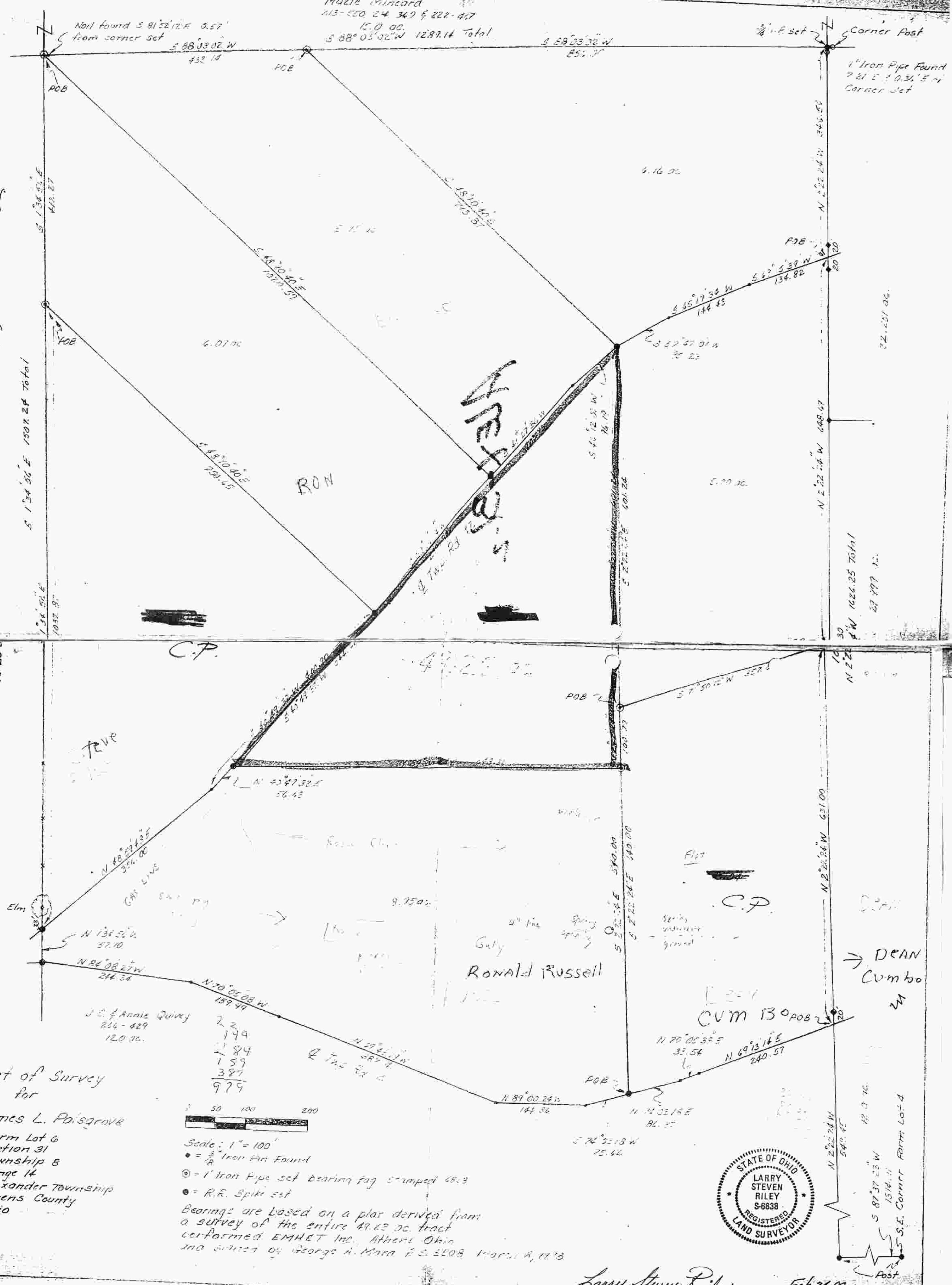
Plot of Survey
 for
 James L. Paisgrave
 Form Lot 6
 Section 31
 Township 8
 Range 14
 Alexander Township
 Athens County
 Ohio



Scale: 1" = 100'
 • = 3/8" Iron Pin Found
 ⊙ = 1" Iron Pipe set bearing tag stamped 68-3
 • = R.R. Spike set
 Bearings are based on a plot derived from
 a survey of the entire 49.23 ac. tract
 performed EMHET Inc., Athens Ohio
 and dated by George A. Mera P.E. 2508, March 8, 1978



Larry Steven Riley Feb 26, 88



C.P.

C.P.

CUM 130 POB 2

DEAN
 Cumbo

