

BRANNER SURVEYING

MEMBER-PROFESSIONAL LAND SURVEYORS OF OHIO

12500 N. PEACH RIDGE ROAD
ATHENS, OHIO 45701

JOHN M. BRANNER
Registered Land Surveyor

TELEPHONE
(614) 592-5778

DESCRIPTION OF A 84.26 ACRE TRACT

Situated in Section 13, T.6, R.13, Ames Township, Athens County, Ohio and being more particularly described as follows:

Commencing at the North-west corner of the South-west Quarter of Section 17, thence, North 84 Degrees 18 Minutes 59 Seconds West, 1579.87 feet (passing a stone at 758.34 feet) to a fence corner in the East-line of Section 13, said point being the POINT OF BEGINNING;

thence South 64 degrees 01 minute 31 seconds West, a distance of 602.70 feet to an iron pin;

thence South 61 degrees 19 minutes 39 seconds West, a distance of 333.91 feet to an iron pin;

thence South 79 degrees 07 minutes 02 seconds West, a distance of 131.91 feet to a point in State Route 690, passing an iron pin at 95.79 feet;

thence along said road the following courses:

North 46 degrees 10 minutes 39 seconds West, a distance of 431.91 feet;

North 42 degrees 05 minutes 45 seconds West, a distance of 306.19 feet;

North 31 degrees 59 minutes 23 seconds West, a distance of 155.00 feet;

North 26 degrees 10 minutes 36 seconds West, a distance of 402.85 feet;

North 14 degrees 32 minutes 15 seconds West, a distance of 842.44 feet;

South 3 degrees 50 minutes 56 seconds West, a distance of 389.97 feet;

North 3 degrees 14 minutes 09 seconds East, a distance of 103.23 feet;

Thence, leaving said road, North 76 degrees 36 minutes 10 seconds East, a distance of 1244.16 feet to an iron pin, passing an iron pin at 37.52 feet;

South 30 degrees 27 minutes 02 seconds East, a distance of 1675.04 to a stone in the East-line of Section 13;

thence South 6 degrees 35 minutes 43 seconds West, a distance of 727.97 feet to the POINT OF BEGINNING; said described tract

containing 84.261 acres.

Subject to all easements and rights of way of record.



John M. Branner
John M. Branner P.S. 6305

Description checked for
Mathematical Accuracy
ATHENS COUNTY
ENGINEER'S OFFICE
BY: S. Blaus
DATE: 10-12-93

Ames #13

27

BRANNER SURVEYING
MEMBER-PROFESSIONAL LAND SURVEYORS OF OHIO

12500 N. PEACH RIDGE ROAD
ATHENS, OHIO 45701

JOHN M. BRANNER
Registered Land Surveyor

TELEPHONE
(614) 592-5778

DESCRIPTION OF A 84.26 ACRE TRACT

Situated in Section 13, T.6, R.13, Ames Township, Athens County, Ohio and being more particularly described as follows:

Commencing at the North-west corner of the South-west Quarter of Section 17; thence, North 84 Degrees 18 Minutes 59 Seconds West, 1579.87 feet (passing a stone at 758.34 feet) to a fence corner in the East-line of Section 13, said point being the POINT OF BEGINNING;

thence South 64 degrees 01 minute 31 seconds West, a distance of 602.70 feet to an iron pin;

thence South 61 degrees 19 minutes 39 seconds West, a distance of 333.91 feet to an iron pin;

thence South 79 degrees 07 minutes 02 seconds West, a distance of 131.21 feet to a point in State Route 690, passing an iron pin at 95.79 feet;

thence along said road the following courses:

North 46 degrees 10 minutes 39 seconds West, a distance of 421.91 feet;

North 42 degrees 05 minutes 45 seconds West, a distance of 306.19 feet;

North 31 degrees 59 minutes 23 seconds West, a distance of 155.00 feet;

North 26 degrees 10 minutes 36 seconds West, a distance of 422.85 feet;

North 14 degrees 32 minutes 15 seconds West, a distance of 842.44 feet;

North 3 degrees 50 minutes 56 seconds West, a distance of 389.97 feet;

North 3 degrees 14 minutes 09 seconds East, a distance of 103.23 feet;

Thence, leaving said road, North 76 degrees 36 minutes 10 seconds East, a distance of 1244.16 feet to an iron pin, passing an iron pin at 37.52 feet;

South 30 degrees 27 minutes 02 seconds East, a distance of 1675.04 to a stone in the East-line of Section 13; feet;

thence South 6 degrees 35 minutes 43 seconds West, a distance of 727.97 feet to the POINT OF BEGINNING; said described tract

containing 84.261 acres.

Subject to all easements and rights of way of record.



John M. Branner
John M. Branner P.S. 5305

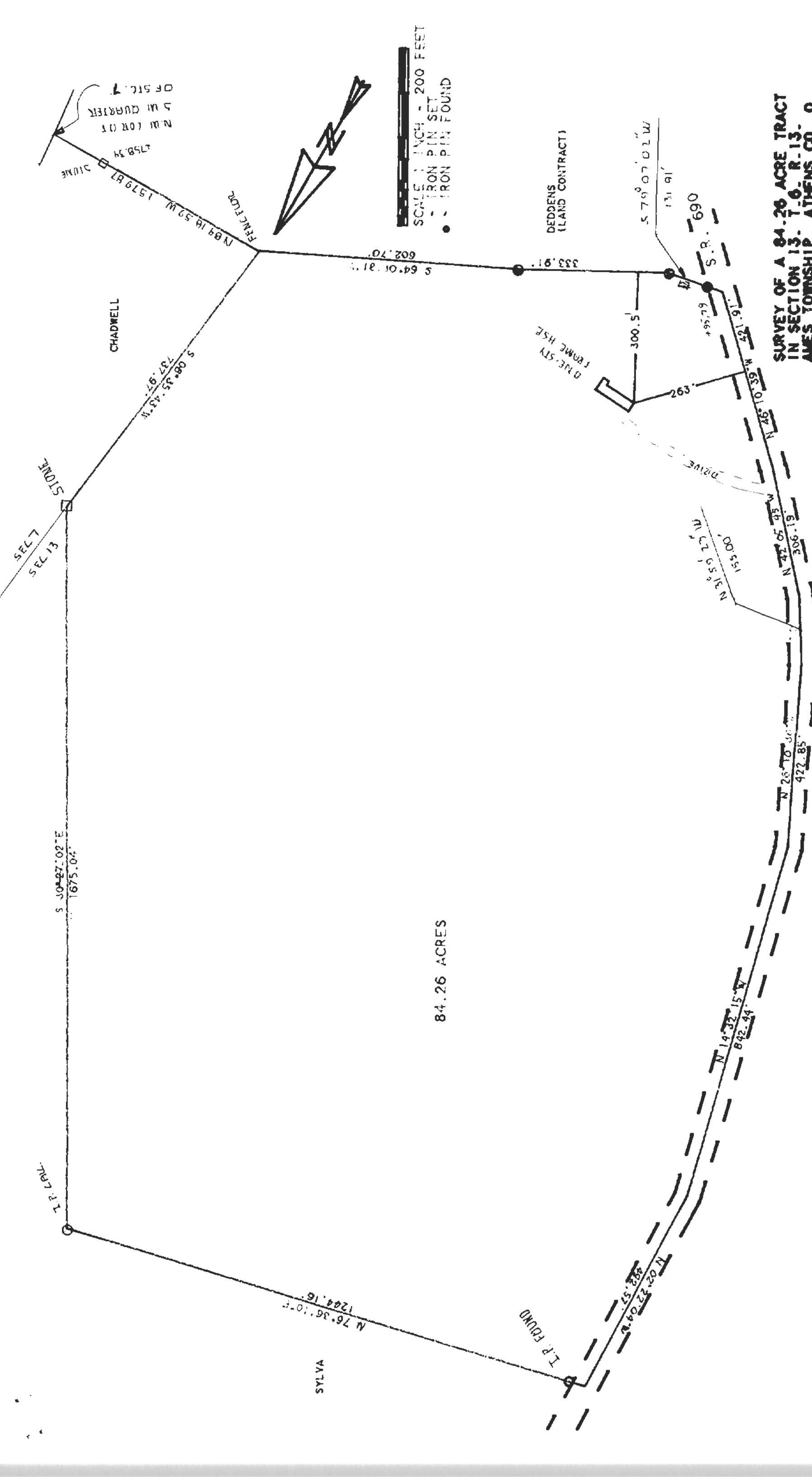
Description checked for
Mathematical Accuracy
ATHENS COUNTY
ENGINEER'S OFFICE

BY: S. Blause
DATE: 10-12-93

29

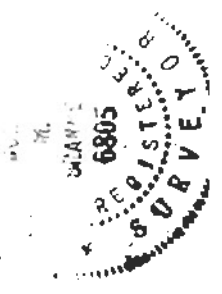
Ames 13

30



SURVEY OF A 84.26 ACRE TRACT
 IN SECTION 13, T. 6. R. 13.
 AMES TOWNSHIP, ATHENS CO., O.
 SURVEYED OCTOBER 1993

JOHN M. BRANNER P.S. 6805
 12500 N. PEACH RIDGE ROAD
 ATHENS, OHIO 592-5778



31