

BRANNER SURVEYING  
12500 N. PEACH RIDGE ROAD  
ATHENS, OHIO 614-592-5778

DESCRIPTION OF A 27.291 ACRE TRACT

Situated in Fraction 7, Section 14, T.6, R.13, Ames Township, Athens County, Ohio and being more particularly described as follows:

Commencing at a stone at the North-west corner of Fraction #7, thence, along the North-line of Fraction #7, South 83 degrees 22 minutes 15 seconds East, 1240.96 feet, passing an iron pin found at 1179.59 feet, to a point in Township Road 337 and being the POINT OF BEGINNING for the tract of land herein described:

thence, continuing along said line, South 83 degrees 22 minutes 15 seconds East, a distance of 1472.10 feet to a point;

thence South 6 degrees 40 minutes 55 seconds West, a distance of 966.44 feet to an existing iron pin, passing an iron pin set at 51.12 feet and following an old fence-line from that point;

thence, along the north-line of a 11.12 acre tract, South 88 degrees 52 minutes 17 seconds West, a distance of 811.40 feet to an existing iron pin;

thence South 50 degrees 11 minutes 30 seconds West, a distance of 84.61 feet to an existing iron pin;

thence, along the east-lines of a 5.00 acre tract, North 25 degrees 18 minutes 21 seconds West, a distance of 231.10 feet to an existing iron pin;

thence North 55 degrees 58 minutes 18 seconds West, a distance of 204.73 feet to an existing iron pin;

thence, along the lines of a 5.05 acre tract, North 20 degrees 21 minutes 22 seconds East, a distance of 356.63 feet to a existing iron pin;

thence North 20 degrees 36 minutes 54 seconds East, a distance of 290.00 feet to a existing iron pin;

thence North 87 degrees 25 minutes 13 seconds West, a distance of 384.08 feet to a point in Township Road 337, passing an iron pin at 354.08 feet;

thence, along said road, North 3 degrees 47 minutes 15 seconds East, a distance of 93.85 feet;

thence North 18 degrees 36 minutes 15 seconds West, a distance of 168.57 feet to the POINT OF BEGINNING; said described tract containing 27.291 acres.

Subject to all easements and rights of way of record.

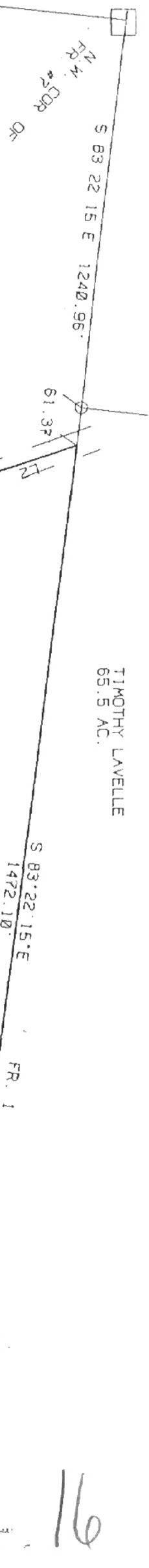
The above description is based on a field survey completed January 1998 by John M. Branner P.S. 6805.

*John M. Branner*

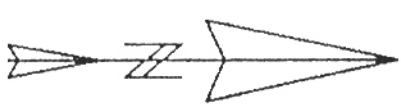
Description checked for  
Mathematical Accuracy  
ATHENS COUNTY  
ENGINEER'S OFFICE  
BY: *S. Blanton*  
DATE: 2-12-98



15  
AMS #14



TIMOTHY LAVELLE  
65.5 AC.



SCALE 1 INCH = 200 FEET  
BEARINGS TO BE USED TO  
DENOTE INTERIOR ANGLES

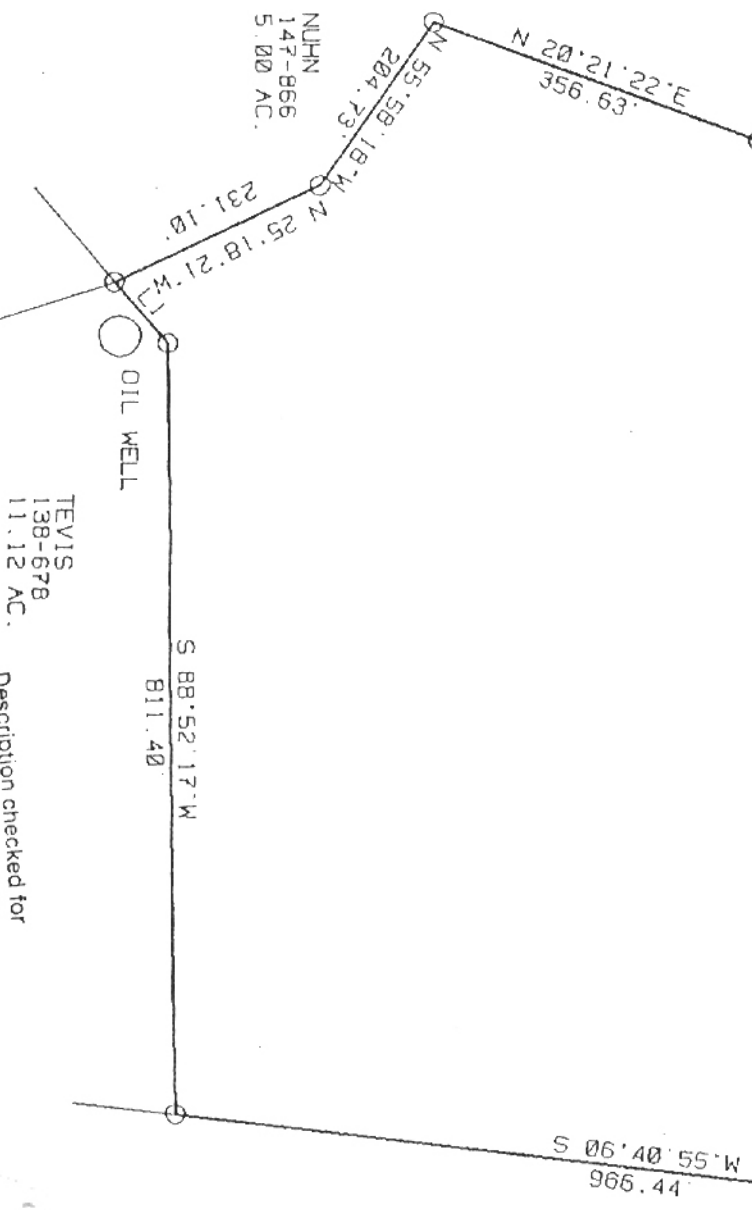
LINE	BEARING	DISTANCE
L 1	S 50° 11' 30\" W	84.61'
L 2	N 18° 36' 15\" W	168.57'
L 3	N 03° 47' 15\" E	93.85'

SURVEY OF A 27.291 ACRE TRACT  
IN FR. 7, SECTION 14, T.6, R.13  
AMES TOWNSHIP, ATHENS COUNTY, OHIO

SURVEYED JANUARY 1998

*John M. Branner*  
JOHN M. BRANNER P.S. 68805  
12500 N. PEACH RIDGE ROAD  
ATHENS, OHIO 614-592-5778

27.291 ACRES



DAMMAN  
39.75 AC

TEVIS  
138-678  
11.12 AC.

OIL WELL

Description checked for  
Mathematical Accuracy  
ATHENS COUNTY  
ENGINEERS OFFICE  
BY: *S. Blauy*  
DATE: 1-27-98



16