

149

BRANNER SURVEYING

MEMBER-PROFESSIONAL LAND SURVEYORS OF OHIO

12500 PEACH RIDGE ROAD
ATHENS, OHIO 45701

JOHN M. BRANNER
Registered Land Surveyor

TELEPHONE
(614) 592-5778

DESCRIPTION OF A 5.003 ACRE TRACT

Situated in Fraction 7, Section 14, T.6, R.13, Ames Township, Athens County, Ohio and being more particularly described as follows:

Commencing at the South-east corner of the West 1/4 of Fraction 13, Section 14, T.6, R.13, Ames Township, thence, North, 1721.6 feet (deed) to a point in the North corner of a 0.13 acre tract; thence, North 06 Degrees 26 Minutes 28 Seconds East, 572.36 feet to a point; thence, North 67 Degrees 37 Minutes 24 Seconds East, 24.93 feet to a point in Township Road 337 and the South-west corner of a 10.151 acre tract as recorded in Volume 367, Page 720, Athens County Deed Records; thence, along Township Road 337 and the West-lines of said 10.15 acre tract, North 06 Degrees 06 Minutes East, 90.71 feet to a point; thence, North 07 Degrees 09 Minutes East, 136.38 feet to a point; thence, North 04 Degrees 12 Minutes 30 Seconds West, 163.17 feet to a point; thence, North 08 Degrees 29 Minutes East, 111.03 feet to a point at the North-west corner of aforementioned 10.15 acre tract and being the point of beginning for the tract of land herein described:

Thence, along the North- line of the 10.15 acre tract, North 50 Degrees 11 Minutes 30 Seconds East, 727.40 feet to an iron pin set, passing an iron pin at 30.0 feet; thence, along a random-line, North 25 Degrees 18 Minutes 21 Seconds West, 231.10 feet to an iron pin set; thence, North 55 Degrees 58 Minutes 18 Seconds West, 204.73 feet to an iron pin set; thence, South 45 Degrees 45 Minutes 23 Seconds West, 317.12 feet to a point in Township Road 337, passing an iron pin set at 293.46 feet; thence, along said road, South 05 Degrees 51 Minutes 42 Seconds West, 75.43 feet to a point; thence, South 00 Degrees 17 Minutes 17 Seconds West, 128.87 feet to a point; thence, South 05 Degrees 42 Minutes 17 Seconds West, 104.00 feet to a point; thence, South 09 Degrees 41 Minutes West, 264.31 feet to the point of beginning and containing 5.003 acres.

Grantor reserves a 50 feet wide easement for ingress and egress along that part of an existing gas well access road that runs through the above described tract.

Subject to all easements and rights of way of record.

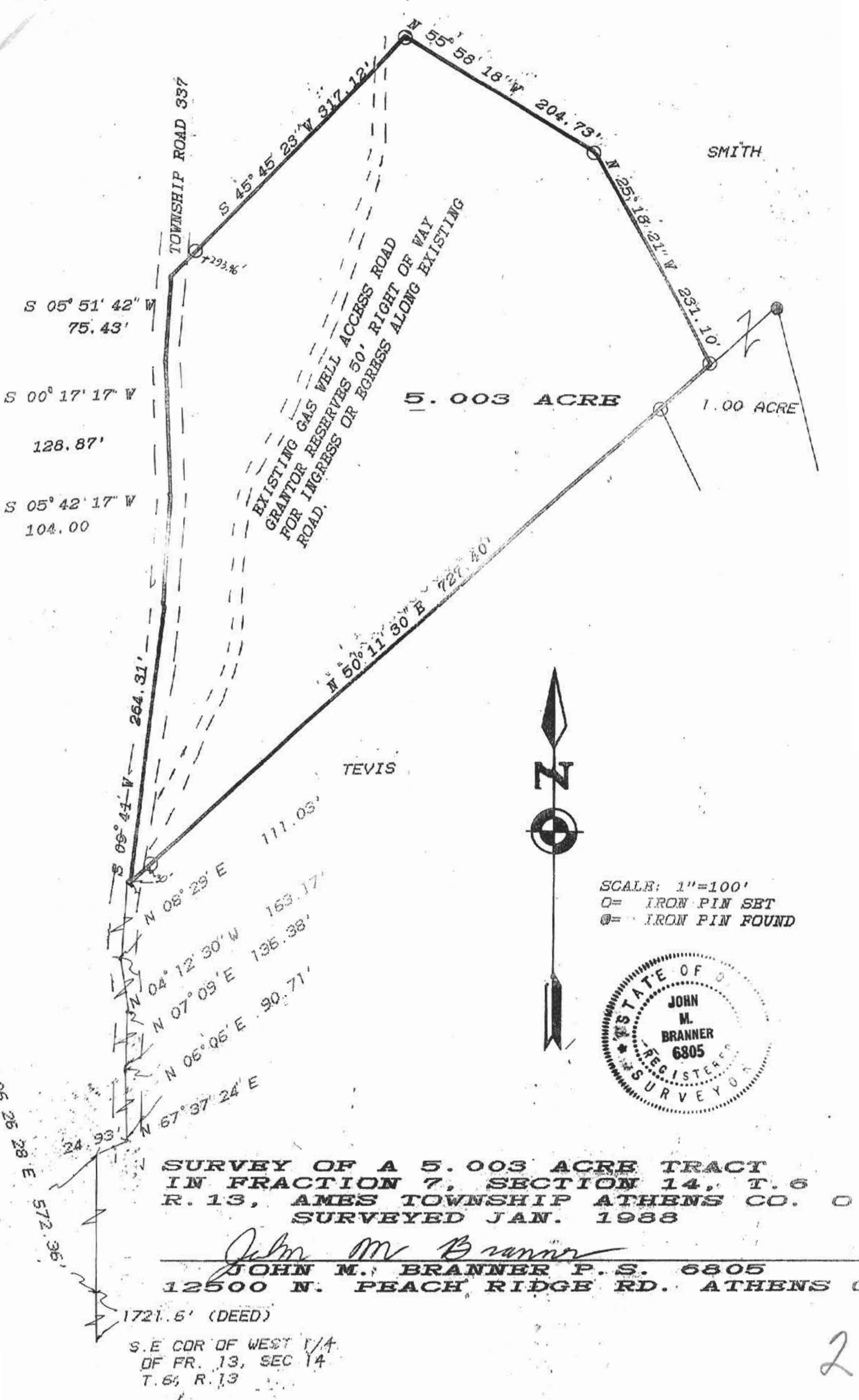
John M. Branner
John M. Branner P.S. 6805

Description checked for
Mathematical Accuracy
ATHENS COUNTY
ENGINEER'S OFFICE

BY: *Bob Eichenberg*
DATE: *2-5-88*



AMS #14



**SURVEY OF A 5.003 ACRE TRACT
 IN FRACTION 7, SECTION 14, T. 6
 R. 13, AMES TOWNSHIP ATHENS CO. O
 SURVEYED JAN. 1988**

John M. Branner
**JOHN M. BRANNER P.S. 6805
 12500 N. PEACH RIDGE RD. ATHENS (**

1721.6' (DEED)
 S.E. COR. OF WEST 1/4
 OF FR. 13, SEC 14
 T. 6, R. 13

SCALE: 1"=100'
 O= IRON PIN SET
 ⊙= IRON PIN FOUND

