



ROBINSON SURVEYING

MEMBER-PROFESSIONAL LAND SURVEYORS OF OHIO
12355 LIARS CORNER ROAD, MILLFIELD, OHIO 45761

ALAN D. ROBINSON
Registered Land Surveyor

TELEPHONE
(740) 593-8774

DESCRIPTION OF A 56.104 ACRE TRACT

Situated in Sections 2 & 8, Town 6, Range 13, Ames Township, Athens County, Ohio, and being more particularly described as follows:

Commencing at the Northwest corner of Section 8; thence, following the East line of said Section, South 0 degrees 01 minutes 56 seconds East, a distance of 413.95 feet to a point in the South line of State Route 550 right-of-way and in County Road 18, said point being the POINT OF BEGINNING of the following described tract;

thence, following said Road and leaving said right-of-way, South 0 degrees 01 minute 56 seconds East, a distance of 139.82 feet to a point;

thence, leaving said Section line and said Road, North 61 degrees 41 minutes 41 seconds East, a distance of 418.10 feet to an iron pin found, passing an iron pin found at 23.08 feet;

thence, North 39 degrees 43 minutes 22 seconds West, a distance of 191.52 feet to an iron pin set in the aforementioned South line of State Route 550 right-of-way;

thence, following said right-of-way, North 49 degrees 52 minutes 25 seconds East, a distance of 185.69 feet to an iron pin set;

thence, leaving said right-of-way, South 87 degrees 33 minutes 36 seconds East, a distance of 131.67 feet to a point in Federal Creek;

thence, following said Creek, South 20 degrees 48 minutes 36 seconds East, a distance of 219.12 feet to a point;

thence, South 8 degrees 18 minutes 36 seconds East, a distance of 124.08 feet to a point;

thence, South 33 degrees 07 minutes 09 seconds West, a distance of 97.14 feet to a point;

thence, South 1 degree 47 minutes 37 seconds West, a distance of 74.73 feet to a point;

thence, South 16 degrees 11 minutes 52 seconds East, a distance of 144.10 feet to a point;

thence, South 48 degrees 01 minute 21 seconds East, a distance of 297.41 feet to a point, Referenced by an iron pin set Bearing, South 70 degrees 50 minutes 16 seconds West, a distance of 34.25 feet;

thence, South 9 degrees 41 minutes 53 seconds West, a distance of 231.54 feet to a point;

thence, South 39 degrees 37 minutes 48 seconds West, a distance of 98.33 feet to a point, Referenced by an iron pin set Bearing, North 75 degrees 07 minutes 24 seconds West, a distance of 29.39 feet;

thence, South 66 degrees 41 minutes 24 seconds West, a distance of 355.08 feet to a point, Referenced by an iron pin set Bearing, South 80 degrees 41 minutes 12 seconds West, a distance of 48.72 feet;

thence, South 23 degrees 36 minutes 24 seconds West, a distance of 105.60 feet to a point;

thence, leaving said Creek, North 89 degrees 53 minutes 33 seconds West, a distance of 349.80 feet to an iron pin set inside County Road 18 right-of-way;

thence, following said Road, South 0 degrees 01 minute 56 seconds East, a distance of 547.80 feet to an iron pin set;

thence, leaving said Road, North 90 degrees 00 minutes 00 seconds East, a distance of 293.62 feet to a point in the aforementioned Federal Creek, Referenced by an iron pin set Bearing, South 67 degrees, 29 minutes 45 seconds West, a distance of 49.94 feet;

thence, following said Creek, South 30 degrees 34 minutes 22 seconds West, a distance of 252.30 feet to a point, Referenced by an iron pin set Bearing, North 85 degrees 11 minutes 0 seconds West, a distance of 33.31 feet;

thence, South 20 degrees 56 minutes 21 seconds East, a distance of 342.68 feet to a point;

thence, South 31 degrees 27 minutes 04 seconds West, a distance of 74.83 feet to a point, Referenced by an iron pin set Bearing, North 37 degrees 04 minutes 18 seconds West, a distance of 32.24 feet;

thence, South 82 degrees 08 minutes 03 seconds West, a distance of 223.08 feet to a P. K. set in the center of a Bridge in County Road 18;

thence, South 80 degrees 53 minutes 28 seconds West, a distance of 130.01 feet to a point, referenced by an iron pin set Bearing North 38 degrees 14 minutes 41 seconds East, a distance of 30.00 feet;

thence, North 51 degrees 45 minutes 19 seconds West, a distance of 133.10 feet to a point;

AMS# 2

000125

thence, North 78 degrees 29 minutes 05 seconds West, a distance of 288.23 feet to a point, Referenced by an iron pin set Bearing, North 21 degrees 29 minutes 50 seconds East, a distance of 30.46 feet;

thence, North 58 degrees 31 minutes 15 seconds West, a distance of 695.49 feet to a point, Referenced by an iron pin set Bearing, North 59 degrees 41 minutes 19 seconds East, a distance of 34.04 feet;

thence, North 2 degrees 06 minutes 06 seconds West, a distance of 56.87 feet to a point;

thence, North 21 degrees 11 minutes 18 seconds East, a distance of 132.34 feet to a point;

thence, North 21 degrees 45 minutes 37 seconds West, a distance of 111.04 feet to a point;

thence, North 63 degrees 32 minutes 35 seconds West, a distance of 198.06 feet to a point Referenced by an iron pin set Bearing, North 36 degrees 48 minutes 57 seconds East, a distance of 28.32 feet;

thence, North 28 degrees 45 minutes 44 seconds West, a distance of 181.30 feet to a point;

thence, North 46 degrees 43 minutes 57 seconds West, a distance of 303.60 feet to a point;

thence, North 63 degrees 37 minutes 08 seconds East, a distance of 189.63 feet to an iron pin set, passing an iron pin set at 42.64 feet;

thence, North 49 degrees 28 minutes 46 seconds East, a distance of 44.97 feet to a point in the aforementioned South line of State Route 550, said point being the point of curvature of a non-tangent curve, concave to the north, having a radius of 1313.24 feet, a central angle of 32 degrees 45 minutes 59 seconds, and a chord of 740.83 feet bearing North 73 degrees 31 minutes 46 seconds East;

thence, east along said curve, a distance of 751.02 feet to a point;

thence, leaving said right-of-way, South 27 degrees 59 minutes 06 seconds East, a distance of 361.92 feet to an iron pin, passing an iron pin at 10.66 feet;

thence, South 17 degrees 00 minutes 54 seconds West, a distance of 809.78 feet to an iron pin;

thence, South 72 degrees 59 minutes 06 seconds East, a distance of 153.91 feet to an iron pin;

thence, North 17 degrees 01 minute 57 seconds East, a distance of 984.74 feet to an iron pin;

thence, North 33 degrees 18 minutes 37 seconds West, a distance of 381.13 feet to an iron pin, said iron pin being the point of curvature of a non-tangent curve, concave to the northwest, having a radius of 1313.24 feet, a central angle of 14 degrees 24 minutes 55 seconds, and a chord of 329.53 feet bearing North 41 degrees 08 minutes 47 seconds East;

thence, northeast along said curve, a distance of 330.40 feet to a point, said point being the point of curvature of a non-tangent curve, concave to the southeast, having a radius of 1654.86 feet, a central angle of 14 degrees 11 minutes 44 seconds, and a chord of 408.96 feet bearing North 41 degrees 17 minutes 42 seconds East;

thence, northeast along said curve, a distance of 410.01 feet to the POINT OF BEGINNING; said described tract containing 56.104 acres (2,443,881.4399 square feet), 20.201 acres being in Section 2 and 35.903 acres being in Section 8, 3.299 acres being Tract 5 of Volume 133 Page 148 Official Records of Athens County, 16.902 acres being 17.00 acre Tract Described in Volume 133 Page 148 Official Records of Athens County, 34.929 acres being out of tract 2 of Volume 133 Page 148 Official Records of Athens County and 0.974 acres being out of Tract 1 of Volume 133 Page 148 Official records of Athens County.

Bearings are based on previous Surveys and are used to denote angles only.
Subject to all easements and right-of-way of record.

All iron pins set are 5/8 inch by 30-inch long rebar with a yellow cap stamped Alan Robinson RLS 8049.

Alan D. Robinson P.S. 8049 bases the above description on a field Survey completed May 8, 2000,

Alan D Robinson

Description checked for
Mathematical Accuracy
ATHENS COUNTY
ENGINEER'S OFFICE

S. Blausey
5-8-2000



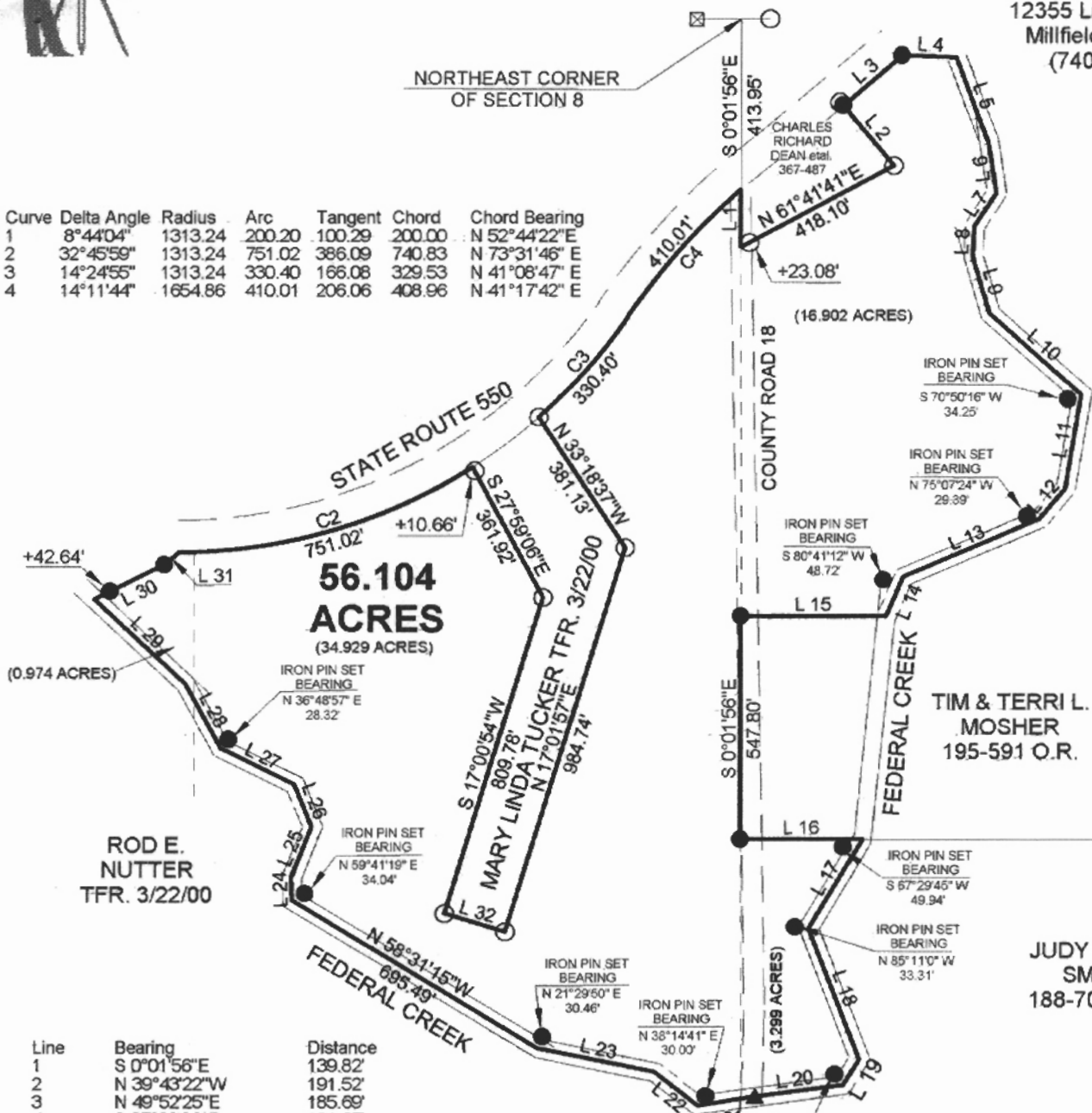
000126

ROBINSON SURVEYING

12355 Liars Corner Rd.
Millfield, Ohio 45761
(740) 593-8774

NORTHEAST CORNER
OF SECTION 8

Curve	Delta Angle	Radius	Arc	Tangent	Chord	Chord Bearing
1	8°44'04"	1313.24	200.20	100.29	200.00	N 52°44'22"E
2	32°45'59"	1313.24	751.02	386.09	740.83	N 73°31'46" E
3	14°24'55"	1313.24	330.40	166.08	329.53	N 41°08'47" E
4	14°11'44"	1654.86	410.01	206.06	408.96	N 41°17'42" E



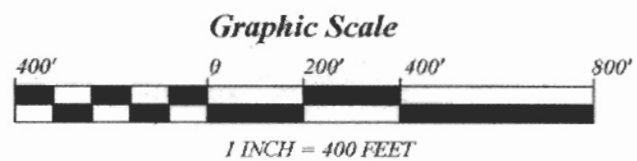
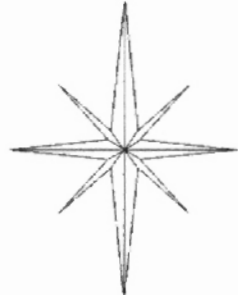
Line	Bearing	Distance
1	S 0°01'56"E	139.82'
2	N 39°43'22"W	191.52'
3	N 49°52'25"E	185.69'
4	S 87°33'36"E	131.67'
5	S 20°48'36"E	219.12'
6	S 8°18'36"E	124.08'
7	S 33°07'09"W	97.14'
8	S 1°47'37"W	74.73'
9	S 16°11'52"E	144.10'
10	S 48°01'21"E	297.41'
11	S 9°41'53"W	231.54'
12	S 39°37'48"W	98.33'
13	S 66°41'24"W	355.08'
14	S 23°36'24"W	105.60'
15	N 89°53'33"W	349.80'
16	N 90°00'00"E	293.62'
17	S 30°34'22"W	252.30'
18	S 20°56'21"E	342.68'
19	S 31°27'04"W	74.83'
20	S 82°08'03"W	223.08'
21	S 80°53'28"W	130.01'
22	N 51°45'19"W	133.10'
23	N 78°29'05"W	288.23'
24	N 2°06'06"W	56.87'
25	N 21°11'18"E	132.34'
26	N 21°45'37"W	111.04'
27	N 63°32'35"W	198.06'
28	N 28°45'44"W	181.30'
29	N 46°43'57"W	303.60'
30	N 63°37'08"E	189.63'
31	N 49°28'46"E	44.97'
32	S 72°59'06"E	153.91'

- = IRON PINS SET
- = IRON PINS FOUND
- △ = RAIL ROAD SPIKE FOUND
- ▲ = P.K. NAIL SET
- ⊠ = STONE FOUND

BEARING REFERENCE
BASED ON PREVIOUS SURVEYS AND
ARE USED TO DENOTE ANGLES ONLY

References
Deeds as Noted
Current Tax Plats
Existing Monumentation

Description checked for
Mathematical Accuracy
ATHENS COUNTY
ENGINEER'S OFFICE
BY: *S. Blausen*
DATE: *5-8-2000*



Plat of Survey of a 56.104 Acre Tract
 Surveyed for: Rod Nutter Date 5/08/00
 Subdivision:
 Ames Township, Section 2 & 8, Town 6, Range 13,
 Athens County, State of Ohio
 Alan D. Robinson Registered Professional Land Surveyor No. 8049
Alan D. Robinson

