

JUL 15 2015

Jill Thompson
Athens County Auditor

Description Checked for
Mathematical Accuracy
Athens County
ENGINEER'S OFFICE
BY: Branch Williams
DATE: 7/13/15

Description of a 10.70 acre Tract

Situated in Fraction 31, Section 20, T.6, R.13, Ames Township, Athens County, Ohio and being a part of Milliron Farms Inc. (456-1713 O.R.) and being more particularly described as follows:

Commencing at the South-west corner of Fraction 32 (Section 27), thence, South 86 degrees 42 minutes 31 seconds East, 781.75 feet to a stone;

thence, South 86 degrees 36 minutes 57 seconds East, 1967.91 feet to a point in State Route 550, passing an iron pin previously set at 1935.01 feet;

Thence, along State Route 550,

South 33 degrees 24 minutes 29 seconds East, 37.46 feet;

S 34° 46' 27" E, 137.73 feet;

S 42° 45' 25" E, 106.27 feet to the **POINT OF BEGINNING**;

Thence, along State Route 550:

S 42° 45' 25" E, 38.95 feet;

S 46° 39' 45" E, 357.93 feet;

S 54° 27' 14" E, 277.63 feet;

S 58° 44' 40" E, 439.21 feet;

S 63° 52' 32" E, 107.05 feet;

Thence, leaving State Route 550 and along the lines of Thompson (303-1516 O.R.)

S 16° 53' 02" W, 98.55 feet to a point near a creek , passing an iron pin set at 20.00 feet at the location of an iron pipe found dislodged;

S 74° 01' 49" W , 58.92 feet to a point near a creek;

N 85° 32' 41" W, 270.15 feet to a point near a creek;

N 85° 22' 26" W, 204.71 feet to a point near a creek, where an iron pipe found bears South 17 degrees 59 minutes 54 seconds East, 93.82 feet;

Thence, along the lines of Adkins Timber Products Inc. (507-1801 O.R.)

S 89° 47' 36" W, 315.88 feet to an iron pin previously set;

N 35° 05' 38" W, 592.17 feet to an iron pin set;

Thence, along new lines created by this survey:

N 18° 04' 03" E, 121.34 feet to an iron pin set;

S 84° 46' 48" E, 7.35 feet to an iron pin set;

N 16° 25' 38" E, 96.17 feet to an iron pin set;

N 59° 30' 32" E, 184.02 feet , passing an iron pin set at 89.95 feet; to the point of beginning and containing 10.70 Acres.

Subject to all easements and rights of way of record.

Iron pins set are 5/8 inch by 30 inch long rebar w/ plastic I.D. Cap stamped Branner P.S. 6805

Bearing : Grid North- N.A.D. 83

The above description is based on a field survey completed July 2015 by John M. Branner P.S. 6805

John M. Branner

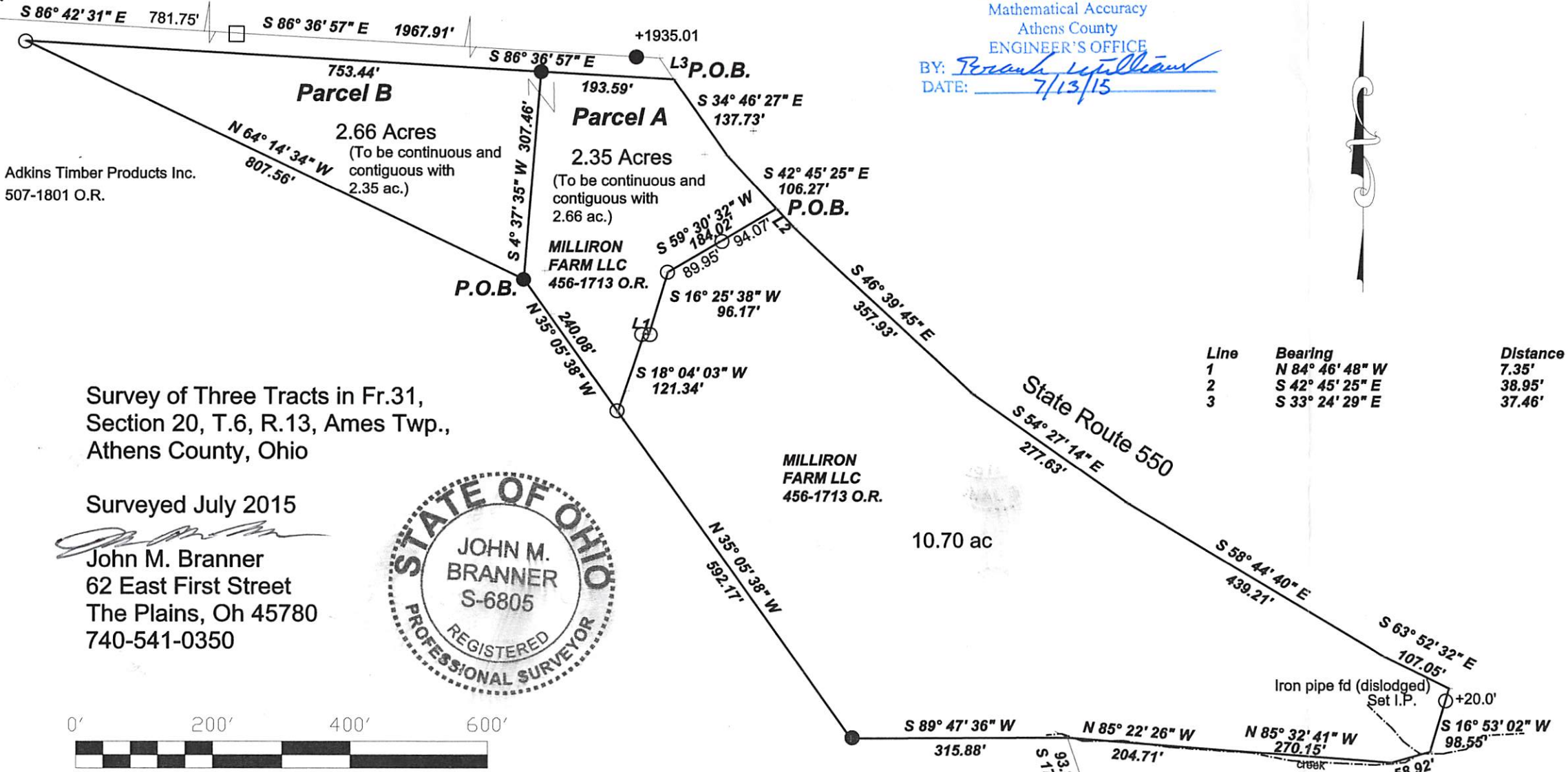


S.W. cor of Fr. 32 (Sec. 27)

Note: Parcel "A" and Parcel "B" are to be continuous and contiguous with each other so as to comprise a 5.01 acre tract.

Description Checked for
Mathematical Accuracy
Athens County
ENGINEER'S OFFICE

BY: *Brandon Williams*
DATE: 7/13/15



Adkins Timber Products Inc.
507-1801 O.R.

Parcel A
2.35 Acres
(To be continuous and contiguous with 2.66 ac.)

Parcel B
2.66 Acres
(To be continuous and contiguous with 2.35 ac.)

MILLIRON FARM LLC
456-1713 O.R.

MILLIRON FARM LLC
456-1713 O.R.

10.70 ac

Adkins Timber Products Inc.
507-1801 O.R.

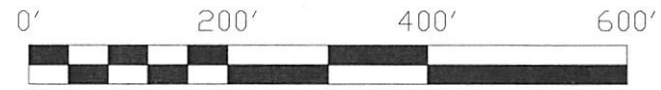
THOMPSON JENNIFER A & JAVAN J
303-1516or
1.9700

Line	Bearing	Distance
1	N 84° 46' 48" W	7.35'
2	S 42° 45' 25" E	38.95'
3	S 33° 24' 29" E	37.46'

Survey of Three Tracts in Fr. 31,
Section 20, T.6, R.13, Ames Twp.,
Athens County, Ohio

Surveyed July 2015

John M. Branner
John M. Branner
62 East First Street
The Plains, Oh 45780
740-541-0350



Scale 1 inch = 200 feet
● = iron pin set (previous survey)
○ = iron pin set this survey
Iron pins set are 5/8"x 30" rebar
w/plastic I.D. cap stmped Branner P.S. 6805
Bearings: N.A.D. 83 Grid North
Ref. Docs: Tax Plats-deeds