

BRANNER SURVEYING

MEMBER-PROFESSIONAL LAND SURVEYORS OF OHIO

12500 N. PEACH RIDGE ROAD
ATHENS, OHIO 45701

JOHN M. BRANNER
Registered Land Surveyor

TELEPHONE
(740) 592-5778

DESCRIPTION OF A 5.184 ACRE TRACT

Situated in Fraction 31, Section 20, T. 6, R. 13, Ames Township, Athens County, Ohio and being a part of a 112.13 acre tract described in Volume 91 Page 17 Official Records of Athens County and being more particularly described as follows.

Commencing at a point in State Route 550 Bearing West 4200.00 feet and North 225.00 feet from the South-east corner of Fraction 31, said point being the POINT OF BEGINNING;

thence, North 68 degrees 11 minutes 40 seconds East, a distance of 67.13 feet to an iron pin set, passing an iron pin set at 29.39 feet;

thence, South 80 degrees 27 minutes 13 seconds East, a distance of 100.48 feet to an iron pin set;

thence, North 79 degrees 07 minutes 22 seconds East, a distance of 66.35 feet to an iron pin set;

thence, North 44 degrees 00 minutes 53 seconds East, a distance of 76.74 feet to an iron pin set;

thence, North 21 degrees 56 minutes 15 seconds West, a distance of 83.57 feet to an iron pin set;

thence, North 2 degrees 29 minutes 42 seconds West, a distance of 103.75 feet to an iron pin set;

thence, North 36 degrees 59 minutes 57 seconds East, a distance of 195.22 feet to an iron pin set;

thence, North 19 degrees 27 minutes 02 seconds East, a distance of 56.55 feet to an iron pin set;

thence, North 5 degrees 13 minutes 46 seconds East, a distance of 129.94 feet to an iron pin set;

thence, North 85 degrees 24 minutes 35 seconds East, a distance of 171.31 feet to an iron pin set;

thence, South 10 degrees 22 minutes 13 seconds East, a distance of 329.48 feet to an iron pin set;

thence, South 12 degrees 28 minutes 33 seconds West, a distance of 422.16 feet to a point in the aforementioned State Route 550, passing an iron pin set at 396.66 feet;

Description checked for
Mathematical Accuracy
ATHENS COUNTY
ENGINEER'S OFFICE
BY: L. Canterbury
DATE: 5-17-98

Ames # 20

25

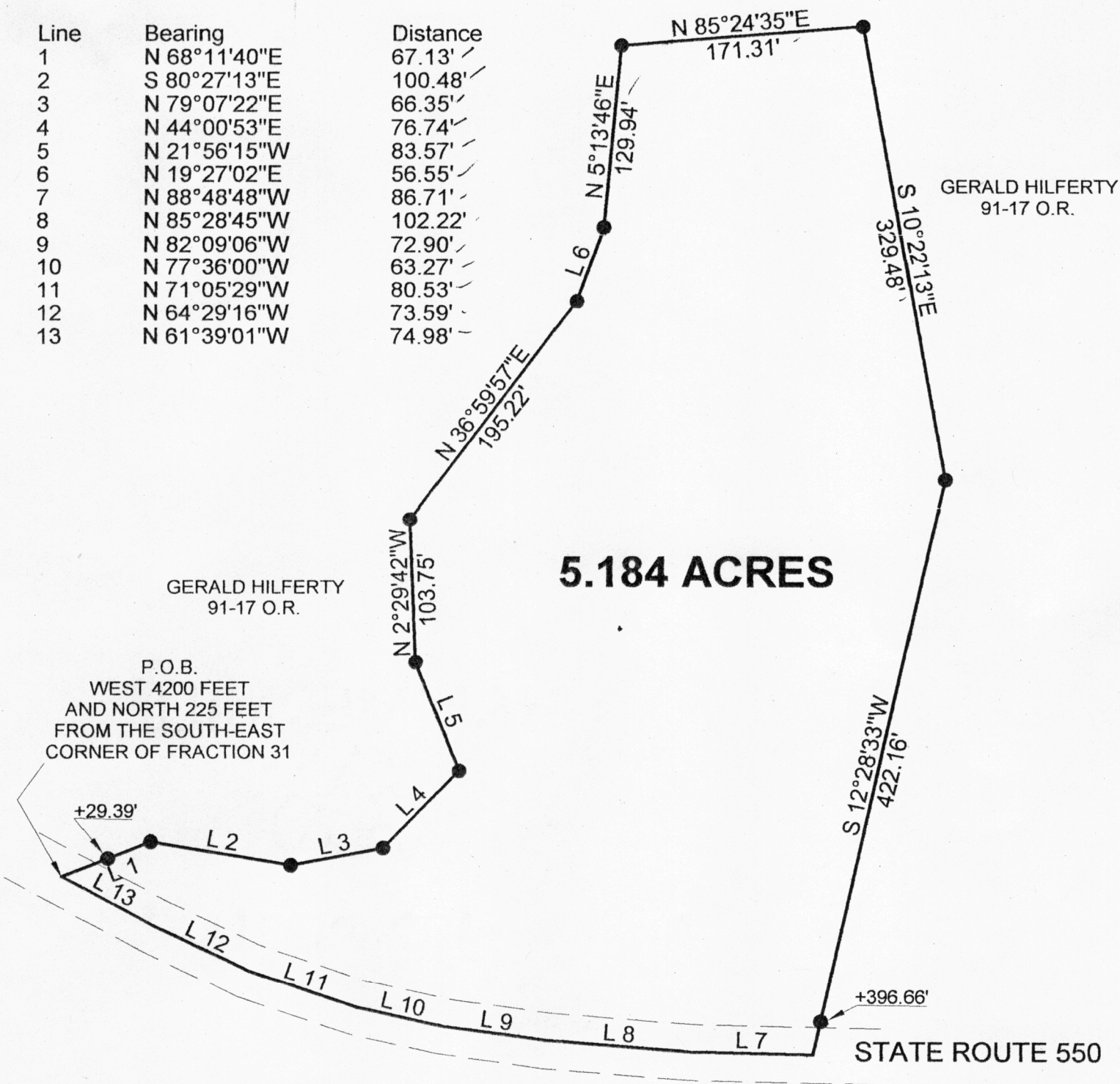
thence, following said State Route 550, North 88 degrees 48 minutes 48 seconds West, a distance of 86.71 feet to a point;
thence, North 85 degrees 28 minutes 45 seconds West, a distance of 102.22 feet to a point;
thence, North 82 degrees 09 minutes 06 seconds West, a distance of 72.90 feet to a point;
thence, North 77 degrees 36 minutes 00 seconds West, a distance of 63.27 feet to a point;
thence, North 71 degrees 05 minutes 29 seconds West, a distance of 80.53 feet to a point;
thence, North 64 degrees 29 minutes 16 seconds West, a distance of 73.59 feet to a point;
thence, North 61 degrees 39 minutes 01 second West, a distance of 74.98 feet to the POINT OF BEGINNING; said described tract containing 5.184 acres (225,823.3074 square feet).

Subject to all easements and right-of-ways of record.
All iron pins set are 5/8 inch x 30 inch long rebar.

The above description is based on a field survey completed May 1998 By: John M. Branner P.S. 6805, 12500 N. Peach Ridge Road, Athens, Ohio 45701 (740) 592-5778

26

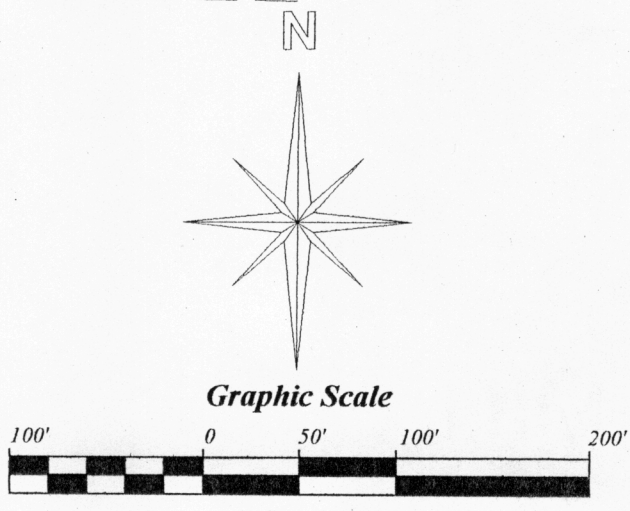
Line	Bearing	Distance
1	N 68°11'40"E	67.13'
2	S 80°27'13"E	100.48'
3	N 79°07'22"E	66.35'
4	N 44°00'53"E	76.74'
5	N 21°56'15"W	83.57'
6	N 19°27'02"E	56.55'
7	N 88°48'48"W	86.71'
8	N 85°28'45"W	102.22'
9	N 82°09'06"W	72.90'
10	N 77°36'00"W	63.27'
11	N 71°05'29"W	80.53'
12	N 64°29'16"W	73.59'
13	N 61°39'01"W	74.98'



**SURVEY OF A 5.184 ACRE TRACT
FRACTION 31, SECTION 20, T. 6, R. 13,
AMES TOWNSHIP, ATHENS COUNTY,
OHIO**

SURVEYED FOR: GERALD HILFERTY

**JOHN M. BRANNER P.S. 6805
12500 N. PEACH RIDGE ROAD
ATHENS, OHIO (740) 592-5778**



- = IRON PINS SET
- = IRON PINS FOUND

BEARINGS ARE ASSUMED AND
ARE USED TO DENOTE ANGLES ONLY

Description checked for
Mathematical Accuracy
ATHENS COUNTY
ENGINEER'S OFFICE
BY: *K. Branner*
DATE: 5-17-98

27