

DESCRIPTION OF A 19.80 ACRE TRACT

Situated in Fraction 18, T.4, R.13, Ames Township, Athens County, Ohio and being more particularly described as follows:

Commencing at an iron pin that bears South 85 Degrees 45 Minutes East, 1052.70 feet from the South-west corner of Fraction 18, thence, North 25 Degrees 23 Minutes 08 Seconds East, 822.36 feet to a point; thence, North 26 Degrees 46 Minutes 06 Seconds West, 63.36 feet to a point; thence, North 49 Degrees 33 Minutes 55 Seconds East, 267.97 feet to an iron pin found; thence, North 49 Degrees 33 Minutes 55 Seconds East, 373.93 feet to an iron pin found; thence, North 33 Degrees 13 Minutes 22 Seconds East, 127.16 feet to a point in Athens County Road 36, said point being the point of beginning for the tract of land herein described:

Thence, South 70 Degrees 42 Minutes 11 Seconds East, 869.15 feet to a point in Ames Township Road 341, passing an iron pin set at 15.22 feet and 850.13 feet;
thence, along said road, South 44 Degrees 04 Minutes 01 Seconds West, 104.12 feet to a point;
thence, along a curve to the left 207.43 feet, with a radius of 321.04 feet and a long chord which bears South 25 Degrees 33 Minutes 25 Seconds West, 203.84 feet ;
thence, South 07 Degrees 03 Minutes Seconds West, 813.12 feet to a point;
thence, along a curve to the right 304.99 feet, with a radius of 248.90 feet and a long chord of South 42 Degrees 09 Minutes 02 Seconds West, 286.26 feet to a point;
thence, South 77 Degrees 15 Minutes 15 Seconds West, 277.04 feet;
thence, along a curve to the right a distance of 90.59 feet with a radius of 90.59 feet and a long chord bearing North 75 Degrees 13 Minutes 40 Seconds West, 87.14 feet;
thence, North 47 Degrees 42 Minutes 36 Seconds West, 79.12 feet to a point at the intersection of Township Road 341 with County Road 36;
thence, along County Road 36, North 25 Degrees 59 Minutes 44 Seconds East, 307.24 feet to a point;
thence, along a curve to the left, 326.48 feet with a radius of 483.85 feet and a long chord which bears North 06 Degrees 39 Minutes 55 Seconds East, 320.32 feet;
thence, North 15 Degrees 34 Minutes 43 Seconds West, 685.11 feet to a point;
thence, along a curve to the right 170.01 feet with a radius of 252.96 feet and a long chord which bears North 02 Degrees 06 Minutes 41 Seconds East, 166.38 feet to a point;
thence, North 21 Degrees 21 Minutes 55 Seconds East, 139.90 feet to the point of beginning and containing 19.80 acres.

Subject to all easements and rights of way of record.

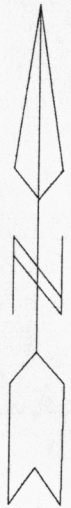
The above description is based on a field survey completed February, 1996 by John M. Branner P.S. 6805

All iron pin set are 5\8 inch by 30 inch rebar

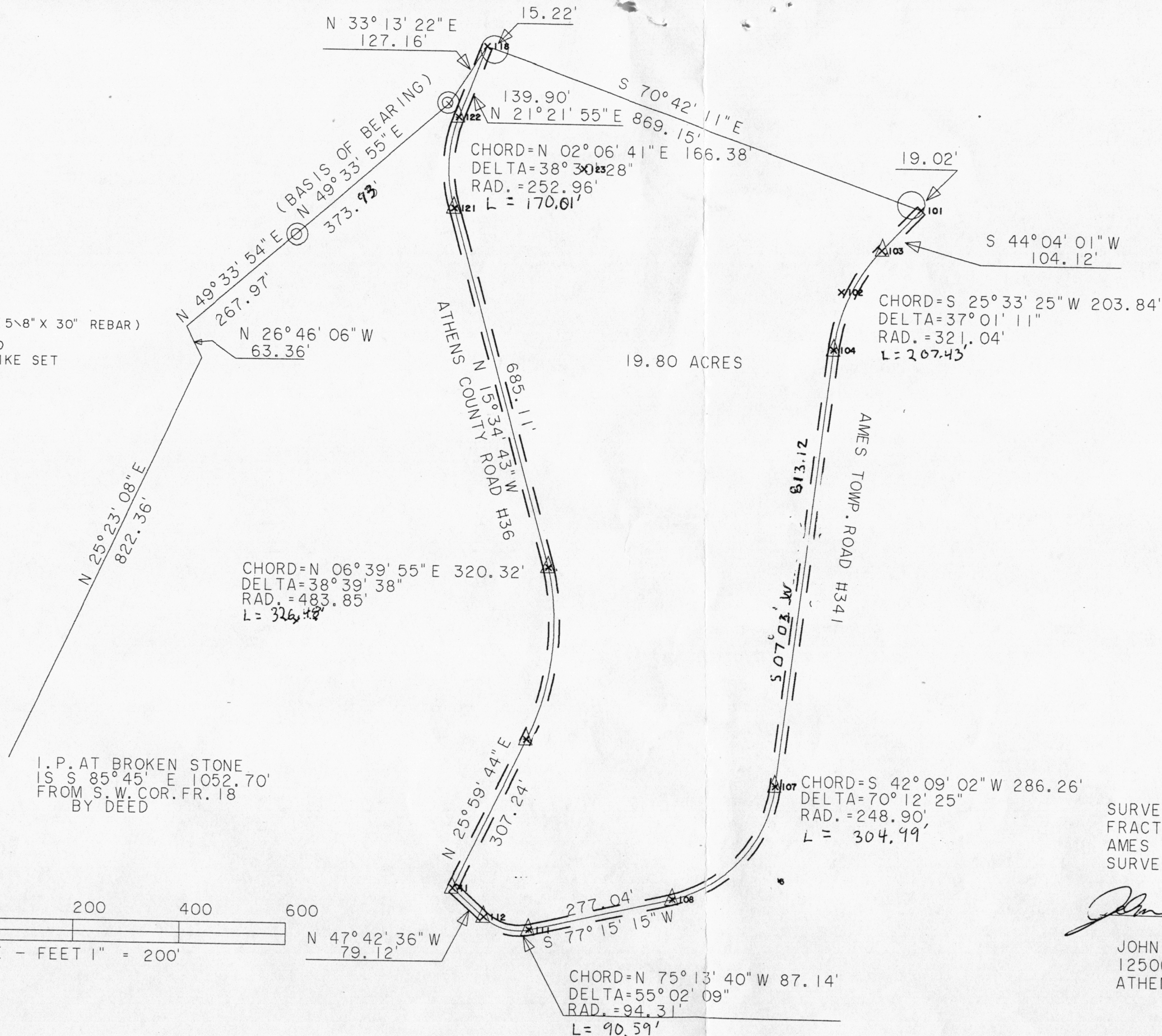
Description checked for
Mathematical Accuracy
ATHENS COUNTY
ENGINEER'S OFFICE
BY: A. Blausen
DATE: 2-20-96

28

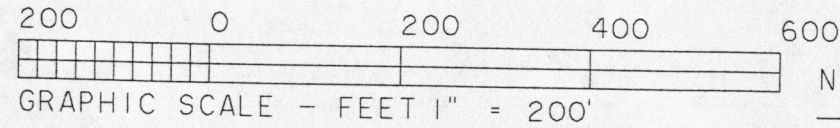
AMST 21



○ IRON PIN SET (5\8" X 30" REBAR)
 ⊙ IRON PIN FOUND
 △ RAIL ROAD SPIKE SET



I.P. AT BROKEN STONE
 IS S 85° 45' E 1052.70'
 FROM S.W. COR. FR. 18
 BY DEED

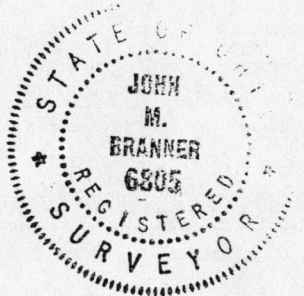


30

SURVEY OF A 19.80 ACRE TRACT IN
 FRACTION 18.T.4,R.13.
 AMES TOWNSHIP, ATHENS COUNTY, OHIO
 SURVEYED JAN. 1996

John M. Branner

JOHN M. BRANNER P.S. 6805
 12500 N. PEACH RIDGE ROAD
 ATHENS, OHIO (614) 592-5778



31