

# BRANNER SURVEYING

MEMBER-PROFESSIONAL LAND SURVEYORS OF OHIO

12500 PEACH RIDGE ROAD  
ATHENS, OHIO 45701

JOHN M. BRANNER  
Registered Land Surveyor

TELEPHONE  
(614) 592-5778

## DESCRIPTION OF A 26.40 ACRE TRACT

Situated in Fraction 18, T.4, R.13, Ames Township, Athens County, Ohio and being more particularly described as follows:

Beginning at an iron pin at a broken stone, said pin bears South 85 Degrees 45 Minutes East, 1052.70 feet from the South-west corner of Fraction 18,

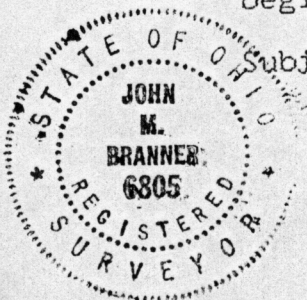
Thence, along the south-line of said Fraction, North 85 Degrees 45 Minutes West, 277.95 feet to a point in Township Road 335; thence, with said road, North 46 Degrees 16 Minutes 37 Seconds West, 147.11 feet to a point; thence, North 40 Degrees 21 Minutes 36 Seconds West, 188.61 feet to a point thence, North 28 Degrees 40 Minutes 32 Seconds West, 278.68 feet to a point; thence, North 10 Degrees 17 Minutes 21 Seconds West, 233.67 feet to a point; thence, North 20 Degrees 23 Minutes 53 Seconds West, 163.71 feet to a rail road spike set; thence, leaving said road, and along Grantor's Westerly-lines, North 86 Degrees 53 Minutes 28 Seconds East, 210.60 feet to an iron pin set; thence, North 03 Degrees 06 Minutes 32 Seconds West, 52.55 feet to an iron pin set; thence, North 19 Degrees 53 Minutes 28 Seconds East, 231.00 feet to an iron pin set; thence, North 41 Degrees 53 Minutes 28 Seconds East, 277.20 feet to a Sugar Tree corner (iron pin set at base); thence, North 45 Degrees 38 Minutes 28 Seconds East, 278.72 feet to a stone found; thence, South 23 Degrees 13 Minutes 35 Seconds East, 158.25 feet to a broken stone found (set iron pin); thence, North 61 Degrees 03 Minutes 07 Seconds East, 187.99 feet to an iron pin set; thence, along a random -line, South 33 Degrees 55 Minutes 17 Seconds East, 660.92 feet to an iron pin set in Grantor's Easterly lines; thence, with Grantor's Easterly-lines, South 49 Degrees 33 Minutes 54 Seconds West, 267.97 feet to an iron pin set; thence, South 26 Degrees 46 Minutes 06 Seconds East, 63.36 feet to an iron pin set; thence, South 25 Degrees 23 Minutes 08 Seconds West, 822.36 feet to the point of beginning and containing 26.40 acres.

Subject to all easements and rights of way of record.

Description checked for  
Mathematical Accuracy  
ATHENS COUNTY  
ENGINEER'S OFFICE  
BY: \_\_\_\_\_  
DATE: 8-7-92

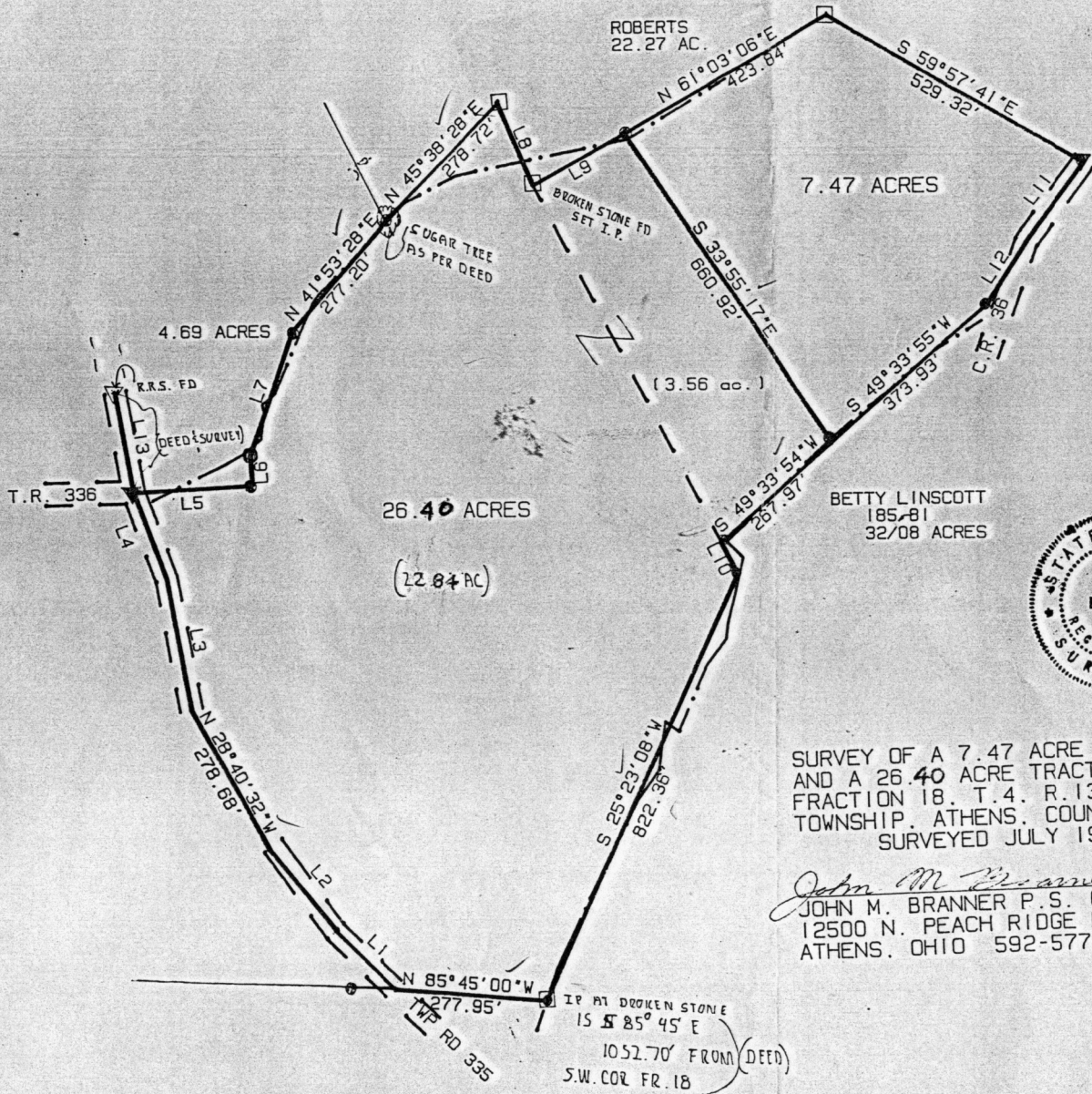
*R.L. Nelson*

*John M. Branner*



*Ames Twp*  
*12*  
*John M. Branner*

6805



LINE	BEARING	DISTANCE
L 1	N 46°16'37"W	147.11'
L 2	N 40°21'36"W	188.61'
L 3	N 10°17'21"W	233.67'
L 4	N 20°23'53"W	163.71'
L 5	N 86°53'28"E	210.60'
L 6	N 03°06'32"W	52.55'
L 7	N 19°53'28"E	231.00'
L 8	S 23°13'35"E	158.25'
L 9	N 61°03'07"E	187.99'
L 10	S 26°46'06"E	63.36'
L 11	S 37°11'11"W	175.37'
L 12	S 33°13'22"W	127.16'
L 13	S 10°00'17"E	178.80'



SURVEY OF A 7.47 ACRE TRACT  
AND A 26.40 ACRE TRACT IN  
FRACTION 18, T.4, R.13, AMES  
TOWNSHIP, ATHENS, COUNTY, OHIO  
SURVEYED JULY 1992

*John M. Branner*  
JOHN M. BRANNER P.S. 6805  
12500 N. PEACH RIDGE ROAD  
ATHENS, OHIO 592-5778



SCALE 1 INCH = 200 FEET  
● = IRON PIN SET  
▼ RAIL ROAD SPIKE SET  
□ STONE  
--- EXISTING FENCE