

DESCRIPTION OF A 98.01 ACRE TRACT

Situated in Sections 19 and 25 in T. 6. R. 13 , Ames Township, Athens County, Ohio and being all of a 39.41 acre tract and part of a Milliron Farms Tract (455-2196 O.R.) and being more particularly described as follows:

Beginning at a stone found at the South-east corner of Section 25 , Ames Township, Thence, along the South-line of Section 25 and the North-line of Lewis (434-2088 O.R.) N 86°19'11" W, 1072.22 feet to an iron pin found;
Thence, along the -lines of Moreland(455-2196 O.R.) N 21°49'25" E, 2108.19 feet to an iron pin found;
N 55°19'37" W, 517.94 feet to an iron pin;
N 24°15'54" W, 131.79 feet to a cherry tree;
Thence, with the lines of Barger(359-661 O.R.) and along the south side of a creek: S 84°51'40" E, 162.47 feet to a walnut tree, passing iron pins found at 20.00 feet and 142.47 feet;
S 67°30'43" E, 227.45 feet to a walnut tree;
S 61°10'01" E, 330.82 feet to a point;
S 68°32'32" E, 263.58 feet to an iron pin found in the east-line of Section 25;
N 3°15'28" E, 1298.65 feet to a point in County Road 34, passing an iron pin found at 1278.65 feet;
Thence, along said road:
S 61°20'20" E, 68.63 feet
S 43°41'27" E, 46.92 feet
S 40°11'40" E, 37.43 feet
S 38°59'27" E, 131.84 feet
S 41°49'35" E, 130.59 feet
S 45°41'36" E, 223.38 feet
S 51°47'35" E, 536.19 feet
S 60°03'58" E, 136.54 feet
S 60°05'17" E, 233.66 feet
S 55°14'05" E, 585.43 feet to a point in the center of a bridge
Thence, leaving said road and along a creek and along the lines of a Milliron Farms Tract(455-2196)
S 34°28'22" W, 66.97 feet
S 71°24'44" W, 147.23 feet
S 17°02'21" W, 55.64 feet
S 14°55'28" W, 46.85 feet
S 12°14'52" W, 66.05 feet to a fork of 2 creeks
S 13°09'35" E, 121.93 feet to an iron pin found on the south bank of a creek;
Thence, along the west-lines of Davis(363-769)
S 19°39'39" W, 738.61 feet to an iron pin found in Pete Smith Road
Thence, along the north-lines of Yahini (404-1047 OR.) and Patti(291-333 O.R.)
N 86°06'12" W, 1367.76 feet to a stone found;
Thence, along the west-line of Patti (385-249 O.R.) and east-line of Section 25
S 4°08'36" W, 1094.79 feet to the point of beginning and containing 98.01 Acres
Subject to all easements and rights of way of record
Bearings based on Nad 83 Grid North

The above description is based on a field survey completed June 2011 by John M. Branner P.S. 6805



Description Checked for
Mathematical Accuracy
Athens County
ENGINEER'S OFFICE
BY: S. Blause
DATE: 6-15-11

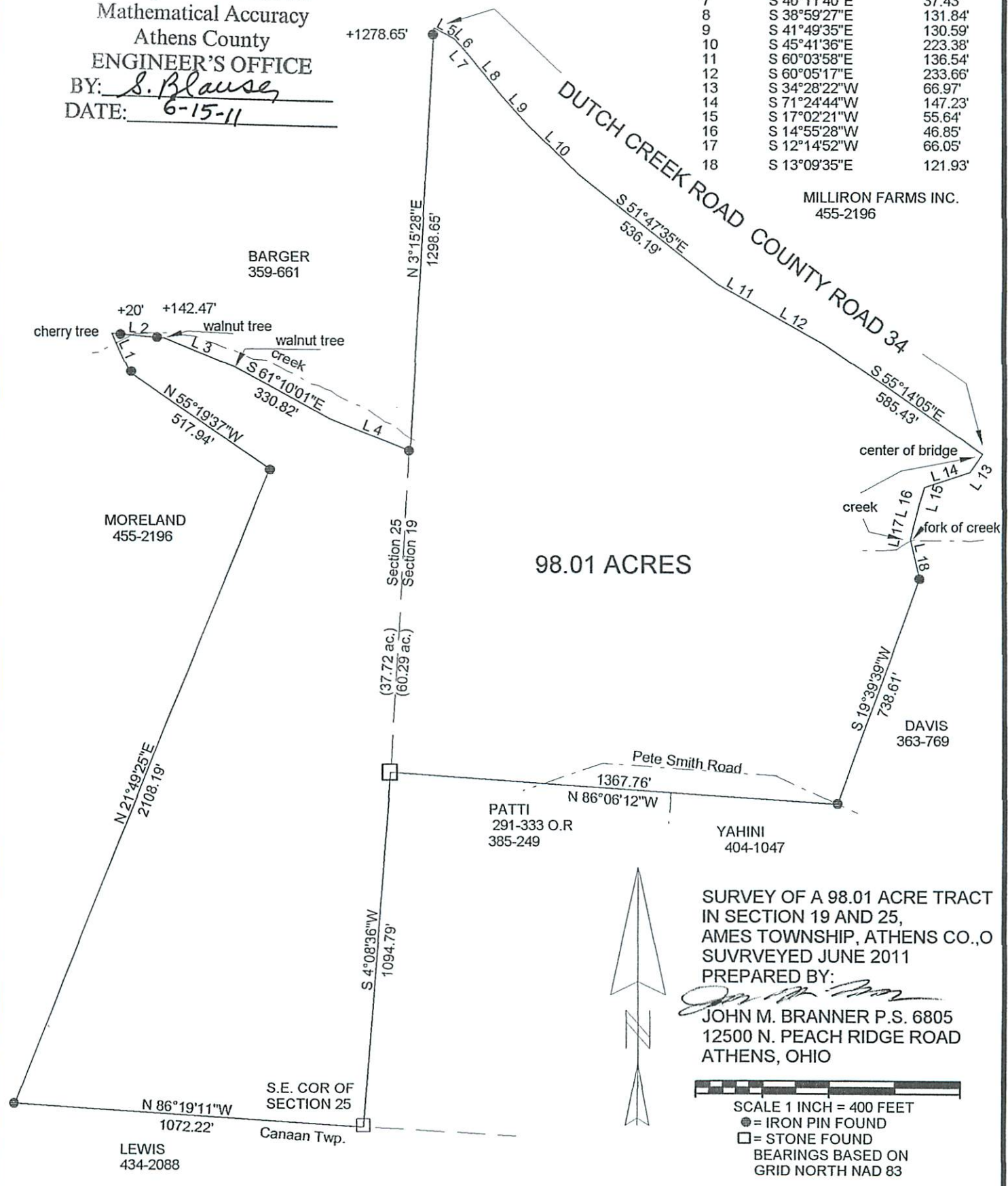
Description Checked for
Mathematical Accuracy
Athens County
ENGINEER'S OFFICE
BY: S. Blause
DATE: 6-15-11

AMS#19

Description Checked for
 Mathematical Accuracy
 Athens County
 ENGINEER'S OFFICE
 BY: S. Blause
 DATE: 6-15-11

Line	Bearing	Distance
1	N 24°15'54"W	131.79'
2	S 84°51'40"E	162.47'
3	S 67°30'43"E	227.45'
4	S 68°32'32"E	263.58'
5	S 61°20'20"E	68.63'
6	S 43°41'27"E	46.92'
7	S 40°11'40"E	37.43'
8	S 38°59'27"E	131.84'
9	S 41°49'35"E	130.59'
10	S 45°41'36"E	223.38'
11	S 60°03'58"E	136.54'
12	S 60°05'17"E	233.66'
13	S 34°28'22"W	66.97'
14	S 71°24'44"W	147.23'
15	S 17°02'21"W	55.64'
16	S 14°55'28"W	46.85'
17	S 12°14'52"W	66.05'
18	S 13°09'35"E	121.93'

MILLIRON FARMS INC.
 455-2196



SURVEY OF A 98.01 ACRE TRACT
 IN SECTION 19 AND 25,
 AMES TOWNSHIP, ATHENS CO., O
 SUVRVEYED JUNE 2011

PREPARED BY:
John M. Branner
 JOHN M. BRANNER P.S. 6805
 12500 N. PEACH RIDGE ROAD
 ATHENS, OHIO

SCALE 1 INCH = 400 FEET
 ● = IRON PIN FOUND
 □ = STONE FOUND
 BEARINGS BASED ON
 GRID NORTH NAD 83

Description Checked for
 Mathematical Accuracy
 Athens County
 ENGINEER'S OFFICE
 BY: S. Blause
 DATE: 6-15-11

John M. Branner