

DESCRIPTION OF A 8.85 ACRE TRACT

Situated in Section 25, T.6, R.13, Ames Township, Athens County, Ohio and being more particularly described as follows:

Commencing at the North-west corner of the North-east Quarter of Section 25, thence, South 1322.87 feet; thence East, 1247.83 feet to an iron pin at the North-west corner of a 9.582 acre tract; thence, along the North-line of said tract, South 79 Degrees 46 Minutes 44 Seconds East, 384.70 feet to an iron pin at the North-east corner of said tract and being the POINT OF BEGINNING for the tract of herein described:

thence North 87 degrees 08 minutes 32 seconds East, a distance of 367.71 feet to an iron pin set;
thence South 67 degrees 24 minutes 48 seconds East, a distance of 204.03 feet to an iron pin set;
thence South 6 degrees 52 minutes 54 seconds West, a distance of 340.76 feet to an iron pin set;
thence South 21 degrees 34 minutes 26 seconds West, a distance of 326.18 feet to an iron pin set;
thence South 0 degrees 20 minutes 10 seconds East, a distance of 168.56 feet to a point in County Road 34, passing an iron pin set at 150.79 feet;
thence, along said road, South 86 degrees 50 minutes 01 second West, a distance of 40.00 feet;
thence South 83 degrees 16 minutes 21 seconds West, a distance of 260.73 feet;
thence, leaving said road, North 1 degrees 23 minutes 50 seconds West, a distance of 73.96 feet to an iron pin found, passing an iron pin found at 31.71 feet;
thence North 14 degrees 39 minutes 27 seconds West, a distance of 101.75 feet to an iron pin;
thence North 5 degrees 25 minutes 44 seconds West, a distance of 733.89 feet to the POINT OF BEGINNING; said described tract containing 8.853 acres.

Subject to all easements and rights of way of record.



Deputy J. Branner for
Athens County
CITY
OFFICE

S. Blausen
11-21-96

AMS # 25

DESCRIPTION OF A 50 FEET WIDE EASEMENT THAT RUNS THROUGH
AN 8.85 ACRE TRACT

Situated in Section 25, T.6, R.13, Ames Township, Athens County,
Ohio and being more particularly described as follows:

Commencing at the North-west corner of the North-east Quarter of
Section 25, thence, South 1322.87 feet; thence East, 1247.83 feet
to an iron pin at the North-west corner of a 9.582 acre tract;
thence, along the North-line of said tract, South 79 Degrees 46
Minutes 44 Seconds East, 384.70 feet to an iron pin at the
North-east corner of said tract; thence, South 05 degrees 25
Minutes 44 Seconds East, 733.89 feet to an iron pin; thence,
South 14 Degrees 39 Minutes 27 Seconds East, 101.75 feet to an
iron pin; thence, South 01 Degree 23 Minutes 50 Seconds East,
73.96 feet to a point in County road 34, passing an iron in at
42.25 feet and being the South-west corner of a 8.85 acre tract;
thence, along said road, North 83 Degrees 16 Minutes 21 Seconds
East, 25.11 feet to the point of beginning for the easement
herein described and being 25 feet on each side of the following
described center-line:

thence, North 1 degrees 23 minutes 50 seconds West, a distance of
73.96 feet;
thence North 8 degrees 41 minutes 03 seconds West, a distance of
222.23 feet;
thence North 15 degrees 56 minutes 43 seconds East, a distance of
101.92 feet;
thence North 42 degrees 39 minutes 21 seconds East, a distance of
121.02 feet;
thence North 66 degrees 57 minutes 38 seconds East, a distance of
189.08 feet;
thence North 6 degrees 30 minutes 02 seconds East, a distance of
277.38 feet;
thence North 34 degrees 17 minutes 12 seconds East, a distance of
69.50 feet;
thence North 67 degrees 24 minutes 48 seconds West, a distance of
80.00 feet to the POINT OF ENDING.

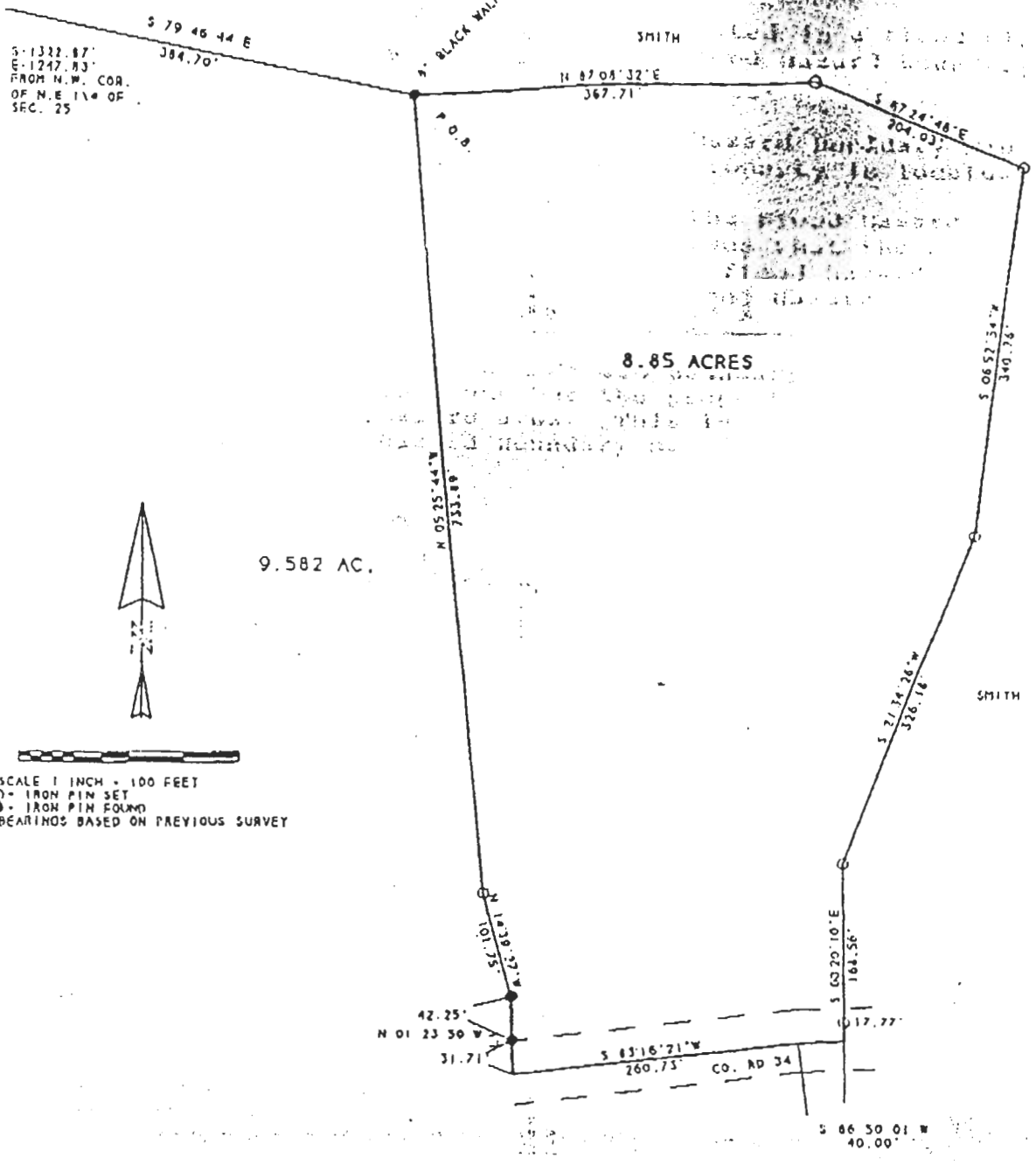
John M. Branner P.S. 6805



2

Larry Coors
E.T.R.

2886



SCALE 1 INCH = 100 FEET
 ○ - IRON PIN SET
 ● - IRON PIN FOUND
 BEARINGS BASED ON PREVIOUS SURVEY

SURVEY OF A 8.85 ACRE TRACT
 IN SECTION 25, T. 6, R. 13,
 AMES TOWNSHIP, ATHENS CO., O.
 SURVEYED JUNE 1996

JOHN M. BRANNEN P.L.S. 6805
 12500 N. PEACH RIDGE ROAD
 ATHENS, OHIO 614-593-5778



3

EXHIBIT "A"

DESCRIPTION OF A 8.85 ACRE TRACT

Situated in Section 25, T.6, R.13, Ames Township, Athens County, Ohio and being more particularly described as follows:

Commencing at the North-west corner of the North-east Quarter of Section 25, thence, South 1322.87 feet; thence East, 1247.83 feet to an iron pin at the North-west corner of a 9.582 acre tract; thence, along the North-line of said tract, South 79 Degrees 46 Minutes 44 Seconds East, 384.70 feet to an iron pin at the North-east corner of said tract and being the POINT OF BEGINNING for the tract of herein described:

thence North 87 degrees 08 minutes 32 seconds East, a distance of 367.71 feet to an iron pin set;
thence South 67 degrees 24 minutes 48 seconds East, a distance of 204.03 feet to an iron pin set;
thence South 6 degrees 52 minutes 54 seconds West, a distance of 340.76 feet to an iron pin set;
thence South 21 degrees 34 minutes 26 seconds West, a distance of 326.18 feet to an iron pin set;
thence South 0 degrees 20 minutes 10 seconds East, a distance of 168.56 feet to a point in County Road 34, passing an iron pin set at 150.79 feet;
thence, along said road, South 86 degrees 50 minutes 01 second West, a distance of 40.00 feet;
thence South 83 degrees 16 minutes 21 seconds West, a distance of 260.73 feet;
thence, leaving said road, North 1 degrees 23 minutes 50 seconds West, a distance of 73.96 feet to an iron pin found, passing an iron pin found at 31.71 feet;
thence North 14 degrees 39 minutes 27 seconds West, a distance of 101.75 feet to an iron pin;
thence North 5 degrees 25 minutes 44 seconds West, a distance of 733.89 feet to the POINT OF BEGINNING; said described tract containing 8.853 acres.

Subject to all easements and rights of way of record.

DESCRIPTION OF A 50 FEET WIDE EASEMENT THAT RUNS THROUGH AN 8.85 ACRE TRACT

Situated in Section 25, T.6, R.13, Ames Township, Athens County, Ohio and being more particularly described as follows:

Commencing at the North-west corner of the North-east Quarter of Section 25, thence, South 1322.87 feet; thence East, 1247.83 feet to an iron pin at the North-west corner of a 9.582 acre tract; thence, along the North-line of said tract, South 79 Degrees 46 Minutes 44 Seconds East, 384.70 feet to an iron pin at the North-east corner of said tract; thence, South 05 degrees 25 Minutes 44 Seconds East, 733.89 feet to an iron pin; thence, South 14 Degrees 39 Minutes 27 Seconds East, 101.75 feet to an iron pin; thence, South 01 Degree 23 Minutes 50 Seconds East, 73.96 feet to a point in County road 34, passing an iron in at 42.25 feet and being the South-west corner of a 8.85 acre tract; thence, along said road, North 83 Degrees 16 Minutes 21 Seconds East, 25.11 feet to the point of beginning for the easement herein described and being 25 feet on each side of the following described center-line:

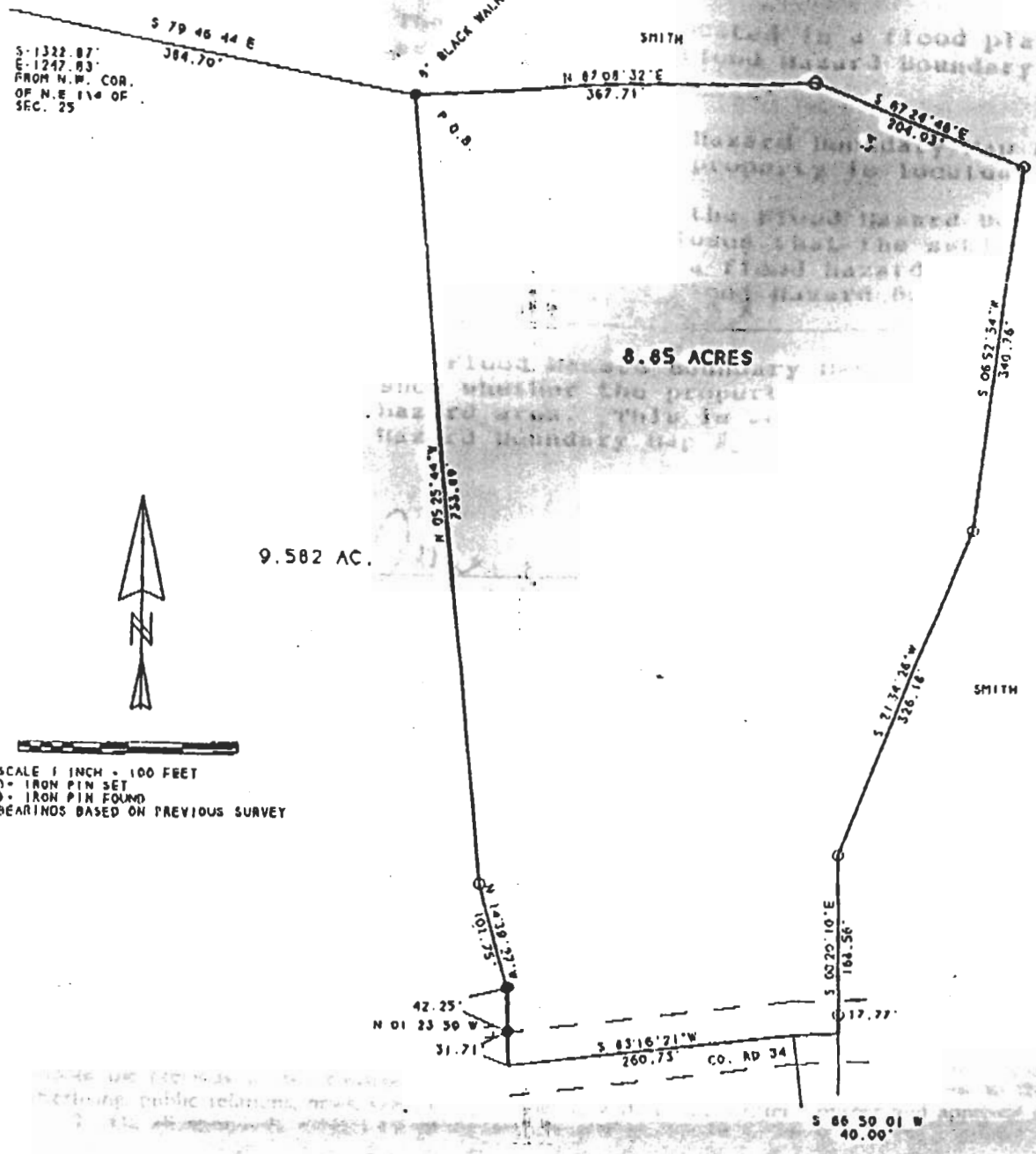
thence, North 1 degrees 23 minutes 50 seconds West, a distance of 73.96 feet;
thence North 8 degrees 41 minutes 03 seconds West, a distance of 222.23 feet;
thence North 15 degrees 56 minutes 43 seconds East, a distance of 101.92 feet;
thence North 42 degrees 39 minutes 21 seconds East, a distance of 121.02 feet;
thence North 66 degrees 57 minutes 38 seconds East, a distance of 189.08 feet;
thence North 6 degrees 30 minutes 02 seconds East, a distance of 277.38 feet;
thence North 34 degrees 17 minutes 12 seconds East, a distance of 69.50 feet;
thence North 67 degrees 24 minutes 48 seconds West, a distance of 80.00 feet to the POINT OF ENDING.

John M. Branner P.S. 6805



Larry Coors

2886



9.582 AC.

8.85 ACRES

SCALE 1 INCH = 100 FEET
 ○ IRON PIN SET
 ● IRON PIN FOUND
 BEARINGS BASED ON PREVIOUS SURVEY

SURVEY OF A 8.85 ACRE TRACT
 IN SECTION 25, T. 6, R. 13,
 AMES TOWNSHIP, ATHENS CO., O.
 SURVEYED JUNE 1996

JOHN H. BRANNER P.S. 6805
 12500 N. PEACH RIDGE ROAD
 ATHENS, OHIO 614-592-5778



6