

Description of a 0.07 acre tract (Tract of Record 452-1554 O.R.)

Situated in Section 3, T.4, R.13, Ames Township, Athens County, Ohio and being the same tract as recorded in Official Records Volume 452, Page 1554 and being more particularly described as follows:

Beginning at a point in the Amesville Corporation line that bears North 76 degrees 00 minutes East , 11.20 feet from the North-west corner of the James Patterson's Addition to the Village of Amesville,

Thence, with the common lines of Mary Jo Harris (305-797 O.R.)

North 15 degrees 00 Minutes West, 20.50 feet to a point;

North 76 degrees 00 minutes East, 46.25 feet to a point;

North 15 degrees 00 minutes West, 26.50 feet to a point;

North 76 degrees 00 minutes East, 46.50 feet to a point;

South 15 degrees 00 minutes East, 47.00 feet to a point in the Amesville Corporation line;

Thence, along said line South 76 degrees 00 minutes West, 92.75 feet to the point of beginning and containing 0.07 acres.

This tract to be continuous and contiguous with the Harris Tract (305-797 O.R.)

Subject to all easements and rights of way of record.

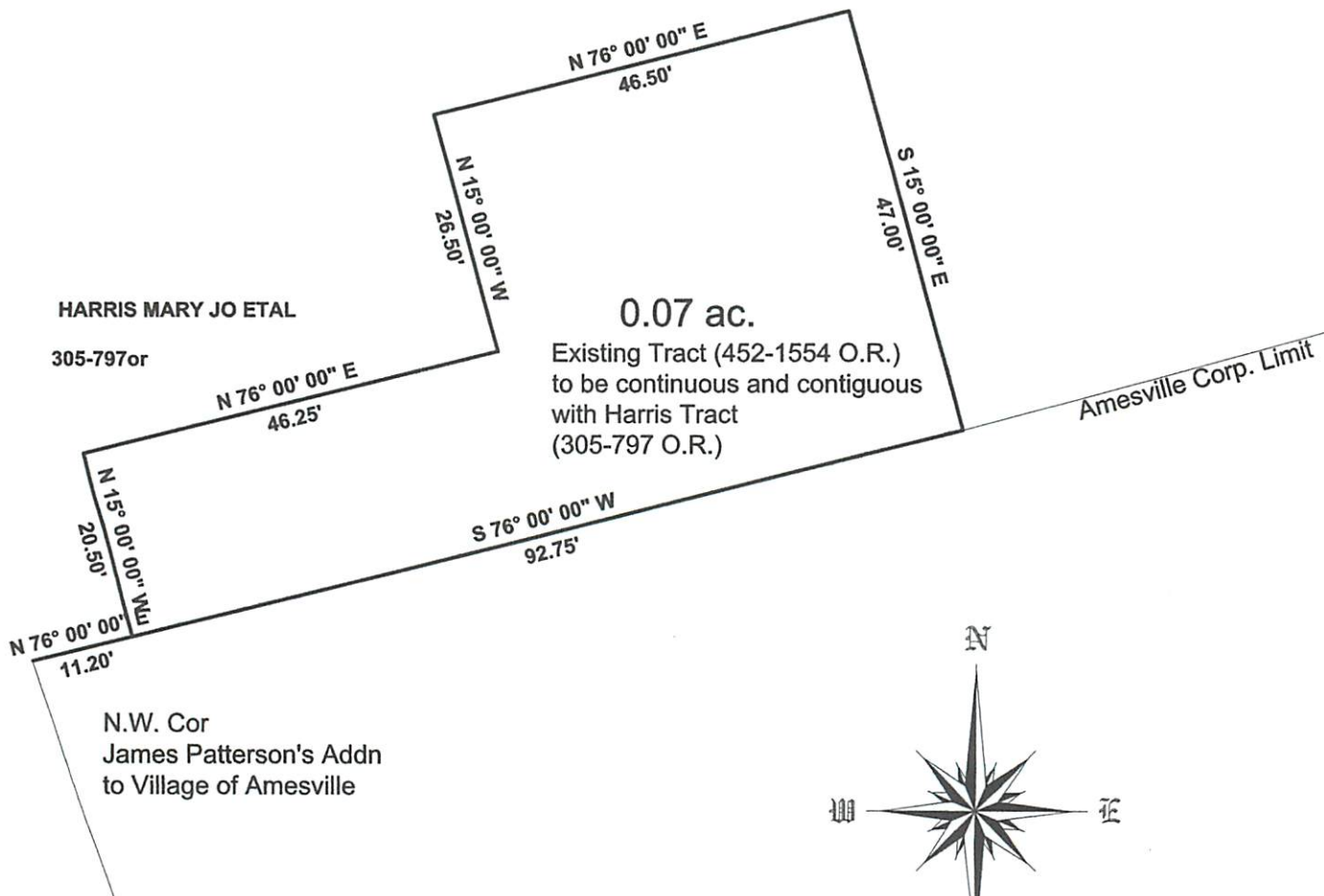
The above description is not based on a field survey

Prepared by John M. Branner P.S. 6805

John M. Branner



Description Checked for
Mathematical Accuracy
Athens County
ENGINEER'S OFFICE
BY: S. Blausey
DATE: 9-25-12



HARRIS MARY JO ETAL
305-797or

0.07 ac.
Existing Tract (452-1554 O.R.)
to be continuous and contiguous
with Harris Tract
(305-797 O.R.)

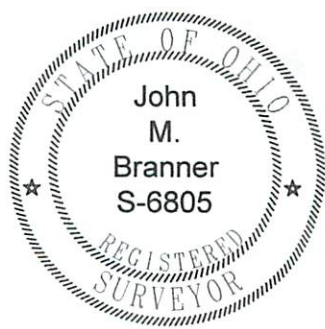
Amesville Corp. Limit

N.W. Cor
James Patterson's Addn
to Village of Amesville

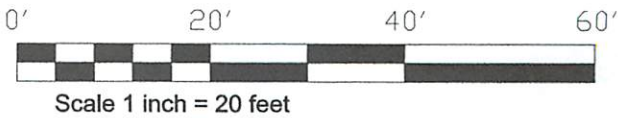


Plat of description of an existing tract of record
as recorded in 452-1554 O.R.
in Section 3, T. 4, R.13, Ames Twp.
Athens Co., O

Prepared by: *John M Branner*
John M. Branner P.S. 6805
62 East First Street
The Plains, Ohio 45780
740-541-0350



Description Checked for
Mathematical Accuracy
Athens County
ENGINEER'S OFFICE
BY: *S. Blause*
DATE: *9-25-12*



Note This map based not based on field survey